

FAP / Strategy Series® II

The Strategy Series® II are the industry's most respected and specified loudspeakers. Acoustic consultants and design build contractors use FAPs in countless airports, hospitals, educational, retail and hospitality applications due to their **accurate frequency response and ease of installation**. When compared to higher cost competitors, the FAPs deliver with the best overall sound and the **greatest value!**

Common Features Include:

- Extended Low Frequency Response Optimally Tuned and Ported
- **Easy Drop or Sheetrock Ceiling Installation via C-Ring/V-Rail Tile Bridge and "Dog Leg" Mounting System (Included)**
- Front Tap Selector Switch (with 8Ω bypass) Allows for Easy System Tuning Adjustments
- Unique "Trap Door" Input Section for Rigid or Flex Through Conduit Runs
- Inputs Features a 4-Pole Phoenix connector for Easy Daisy Chaining Between Speakers
- Cover Includes combination 1.2" / 3.4" (13mm / 19mm) Knock-Outs for Installation Ease
- **Enhanced 70.7V / 100V Internal Transformer Minimizes Insertion Loss and Improves Low Frequency Response and Output**



FAP42T

With a 130° coverage pattern in the 2kHz octave band, the FAP42T is a perfect fit for ceiling heights up to 12'. Fewer loudspeakers are required to achieve uniform coverage vs typical 8" devices because of the highly efficient FA134 4" coaxial driver and quality 70.7V / 100V transformer. For applications with 9' ceilings, the 16 Watt tap setting will provide upwards of 96dB SPL at seated ear height!

Also Available:

FAP42T-B (Black Finish)



FAP42T



FAP42T-B



FAP62T

FAP62T

Flat midrange response, coverage pattern of 110° and maximum 70.7V / 100V transformer tap of 32 watts makes the FAP62T an excellent choice for speech reinforcement and/or paging systems in airports, casinos and restaurants with ceiling heights up to 18'. The FA136, 6" coaxial driver used in the FAP62T provides legacy performance with modern installation convenience.

FAP42T-UL2043 / FAP62T-UL2043

The New FAP-UL2043 Series models from Atlas Sound meet requirements of UL 2043 for loudspeakers used in air handling (true plenum) spaces.



FAP42TC

FAP42TC

With an overall depth of 4" (108mm), the FAP42TC is the perfect choice for high fidelity audio and wide, even coverage when space above the plenum is limited. For wall mount applications (tanning salons or surround sound), the shallow depth fits in most studded walls. The popular C-Ring/V-Rail mounting system provides quick installation into drop tile acoustic ceilings and existing drywall. The optional FAP42-TR may be used for new construction drywall applications.

The FAP42TC includes all the popular FAP42T features: front mounted tap selector switch (with 8Ω bypass), press-fit grilles, high performance 4" poly cone driver with PEI tweeter, and precision crossover components for smooth, even coverage.

FAP42TC-UL2043

The New FAP-UL2043 Series models from Atlas Sound meet requirements of UL 2043 for loudspeakers used in air handling (true plenum) spaces.

FAP42-RR

The FAP42-RR "Retro Ring" allows the FAP42T or FAP42TC to be installed into a typical 8" loudspeaker cutout up to 12". Kit consists of a 13¾" oversized trim ring and four extension "Dog Legs". The C-Ring/V-Rail included with the FAP42T/FAP42TC mounts atop the tile as normal through the center hole of the FAP42-RR. The extended dog legs are tightened and the entire assembly is flush to the ceiling.



FAP42RR



FA42T-6MB

FA62T-8MB

FA42T-6MB / FA62T-8MB

Atlas Sound addresses retrofit and "division of labor" installations with "motor board" versions of the Strategy Series® II.

Model FA42T-6MB and FA62T-8MB are the entire speaker / transformer / selector switch / front plate assembly found in the FAP42T and FAP62T. The footprints are identical to a standard FA series 6" or 8" speaker component and allow the motor board to fit into current Strategy Series® enclosures of those sizes. The FAP42T fits in the same manner as a regular 6" FA Series speaker and the FAP62T fits in the same manner as an 8" FA Series speaker.



FAP40T



FAP40T Installed



FAP40T Installed

FAP40T

Designed for high performance in a very compact footprint, the FAP40T appeals to system designers and architects, and is ideal for high-intelligibility voice, music, and signal reproduction in commercial, industrial, and institutional applications. A unique tap selector switch allows for easy system tuning with a full selection of taps up to 16 Watts (with 8Ω bypass). This switch also functions as a diffuser cone, providing smooth, even dispersion of the high frequency content from the center of the 4" polypropylene driver. The high frequency response is so natural that many assume the driver is a coaxial design instead of a single

cone driver. Low frequency response is enhanced by the tuned and ported enclosure. The FAP40T is UL1480 listed and the enclosure is constructed of high impact injection molded plastic and includes a press fit grille design that blends well with contemporary architecture.

A 2-pole terminal block with a removable metal cover allows for easy system wiring as well as "daisy chain" wiring to other FAP40Ts or even FAPSUB subwoofers (a great combination).

A Tile Bridge is included in the package for suspended ceiling applications. The light weight

design of the FAP40T coupled with the "Dog Leg" mounting system makes additional drywall support unnecessary in most installations.

For new construction drywall ceiling applications, the optional FA-TR4 trim ring is available to provide a marked location for drywall installers to cut around, essentially reserving the FAP40T's desired location until final installation. Mounting holes are provided to accommodate 16" or 24" OC stud / joist mounting. The FAP40T also includes a secondary support point built into the termination cover. This "ring" may be used with an auxiliary support cable in drop tile installations.



FAP82T

The Atlas Sound FAP82T is a premium performance 70.7V / 100V tuned & ported 8" coaxial ceiling speaker system perfectly suited for many business music and public address applications – especially applications where high ceilings require loudspeakers with increased efficiency and tighter pattern control. The 8" coaxial speaker system features extended low frequency response rivaling that of many subwoofers.

The FAP82T will satisfy the needs of owners, architects, contractors, and consultants by delivering true, High-Fidelity sound reproduction in an attractive and easy-to-install system. The FAP82T is ideal for high-intelligibility voice, music, and signal reproduction in commercial, industrial, and institutional applications.

Mounting is simplified with Strategy Series® II style "Dog Leg" tabs that allow easy installation into drop tile or drywall ceilings with provided tile bridge assembly. The tile bridge consists of two triangular formed mounting rails and a C-Ring assembly.



FAP8CXT

Atlas Sound has taken the easy to install Strategy Series® II ceiling speaker package to greater heights with the new FAP8CXT. A specially tuned and ported 933 in³ enclosure houses the high output Atlas Sound 8CXT60 compression driver coaxial loudspeaker. A heavy duty "Dog Leg" mounting system in conjunction with Atlas Sound's exclusive C-Ring V-Rail tile bridge assembly provides ease of installation into acoustic tile ceilings.

Pattern control is accurately maintained at 90° in the 2kHz octave band via the 1" exit high frequency director and phase plug. This high frequency complement is coupled with an extremely durable polypropylene woofer featuring rubber surround and powerful magnetic motor assembly to provide an overall sensitivity of 92dB 1W / 1M. An efficient 60 watt multi-tap transformer is integral to the package but can be bypassed via the front mount tap selector switch for direct coupled 8Ω operation.

The FAP8CXT is conveniently packaged individually with the tile bridge assembly.

For new construction drywall ceiling applications, the optional FAP82-TR may be specified.



FAPSUB

The Commercial audio environment is changing and higher fidelity sound is now expected in commercial sound systems. Customers in retail, restaurant, and hospitality settings demand enhanced music quality during their shopping or dining experience at nearly the same level of sound quality they have in their home theaters and car stereos. The FAPSUB, when used in conjunction with Atlas Sound full-range speakers, provides great sounding background / foreground music reproduction suitable in countless applications.

The woofer features an extended, vented pole piece for higher excursion and better heat dissipation while a Kapton® voice coil former increases power handling. The 933in³, tuned and ported, deep drawn steel enclosure provides low frequency response down to 45Hz (±10dB) and an extremely efficient, 3-pole filtering network eliminates unwanted high frequencies above 150Hz.

A special low saturation 70.7/100V transformer is included with 1.9-60W primary taps (@70.7V) to match and balance the subwoofer with full range speakers without the need for separate amplification. A convenient front mounted selector switch allows tap selection without removing the speaker from the ceiling and includes a transformer bypass setting for 8Ω direct coupling.



SM8CXT-W



SM12CXT-B

SM8CXT & SM12CXT

SM8CXT and SM12CXT feature the high efficiency and pattern control of the Atlas Sound 8CXT60 and 12CXT60 compression driver coaxial loudspeakers in a new, highly versatile enclosure system.

Internal flying hardware includes multiple ¼"-20 inserts for overhead suspension in almost any orientation. (Please use only approved, load rated hardware for suspending loudspeakers).

A 90° conical pattern (2kHz octave band) and amazing efficiency make the SM8CXT and SM12CXT a perfect choice for a wide variety of applications including school auditoriums, gymnasiums & cafeteriums, house of worship systems (F.O.H. and/or monitors), high level foreground music systems, and general live sound reinforcement (installed or portable).

- High Performance Atlas Sound Compression Driver Coaxial Loudspeakers in Versatile, Flyable, Wood Enclosures
- Multiple ¼"-20 Inserts, Providing Fly Points for a Variety of Mounting Configurations
- Includes Internal, High Efficiency 60 Watt 70.7V / 100V Transformer (May be Bypassed for 8Ω Operation)
- Barrier Strip Input for 70.7V / 100V / 8Ω or Parallel 4-Pole Speak-On™ Input for 8Ω Operation Only
- Unique Input Panel Allows Use of Standard 4" Square Box Cover (Raco 753 or Eq.) for Applications Where Flex Conduit is Required for Termination
- Fuse Protection for Low and High Frequency Drivers
- Attractive, Yet Heavy-Duty Grille Assembly
- Durable Black or White (SM12CXT-B / SM8CXT-B , SM12CXT-W / SM8CXT-W) Finish
- Optional Bracket for Wall Mounting
- OMNIMOUNT™ Compatible
- Not For Outdoor Use



SM8SUB70



SM12SUB70

SM8SUB70 & SM12SUB70

The SM8SUB70 and SM12SUB70 subwoofer systems are the perfect complement to any SM Series Speaker System. Ideal for restaurants, bars, high-fashion retail outlets, or anywhere low frequency response is desired, SM series subwoofers deliver power and performance.

Both models extend low frequency response in a wide variety of mounting options. Inserts are included for use with ¼"-20 drop forge eyebolts, optional mounting bracket and OMNIMOUNT™ hardware (30 Series - 8" Models, 60 Series - 12" Models).

An 18dB/oct 3-Pole passive crossover eliminates the need for a separate electronic network or dedicated amplification. Its low 120Hz crossover point nearly eliminates localization, allowing a designer to boundary-load the SM subs near a wall or corner for maximum output, while maintaining even coverage.

A premium 70.7V transformer (with 8Ω bypass) allows the SM8SUB70 and SM12SUB70 to be paralleled with any 70.7V commercial audio system to provide extended low frequency response and more overall audio impact in higher fidelity music systems. Available in black (-B) or White (-W), use SM series subwoofers with other SM series full range loudspeakers.

- Multiple ¼"-20 Inserts, Providing Fly Points for a Variety of Mounting Configurations
- Internal High Efficiency 60W 70.7/100V Transformer (with Bypassed for 8Ω Operation)
- Barrier Strip Input (70.7V/100V/8Ω) or Parallel 4-Pole Speak-On. Input (8Ω Only)
- Unique Input Panel Allows Use of Standard 4" Square Box Cover (Raco 753 or Eq.) for Applications Where Flex Conduit is Required for Termination
- Fuse Protection for Driver
- Attractive, Yet Heavy-Duty Grille Assembly
- Available in Black or White Finish
- Optional Bracket for Wall Mounting
- Not For Outdoor Use



SM / Strategy Series

- Compact, Weather-Resistant 2-Way Loudspeaker Systems for Indoor or Outdoor Use with Exceptional Performance
- UV-Resistant, Talc-Impregnated, Polypropylene Injection Molded Enclosures, Available in Black or White
- Powder Coated Aluminum Grilles
- 100 Hour Salt Spray Tested Per ASTM B117
- Color Matched, Zinc Chromate Plated, Powder Coated "C" Style Bracket (Included)
- **Constant Directivity TRX WAVEGUIDE™ System Provides Accurate High Frequency Coverage**
- PolyGuard™ High Frequency Protection (NOT Available in SM42T)
- All SAE Brass Hardware Inserts Allow Integration of "Off-The-Shelf" Security Hardware
- 70.7V and/or 8Ω Operation
- Five-Year Warranty



Use Atlas Sound's Surface Mount loudspeakers where versatility and high fidelity sound are desired in commercial, professional, and residential applications. These systems are ideal indoors or out in monaural and stereo foreground or background music systems; video systems in conference rooms & classrooms, boutiques / shops, restaurants / cafes, leisure, recreation / sports centers, houses of worship, and more.

All models are constructed of weather resistant materials: UV-resistant, talc impregnated, polypropylene injection molded cabinets; polypropylene or treated woofer cones; powder coated aluminum grilles and all brass hardware. The SM Series have been evaluated for weather resistance by undergoing a stringent 100 hour salt spray test per the ASTM B117 standard passing with no visible corrosion or degradation of performance.

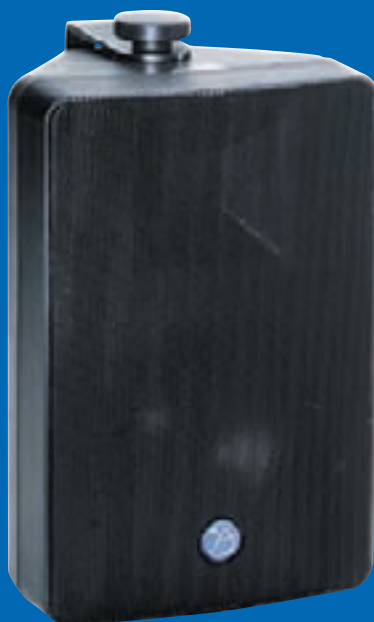
Multi-position, C-shaped mounting brackets are included are designed to provide easy vertical or horizontal installation on almost any surface. Optional ball mount (model SMBALLMOUNT-B/W, SM42T & SM52T Only) is available when concealed mounting hardware is required.



SMBALLMOUNT-W

**SM42T**

Compact size and outstanding frequency response make the SM42 a perfect solution BGM, or other general sound reinforcement applications such as playback systems for multimedia in classrooms. System components consist of a highly efficient 4" woofer and a FerroFluid cooled, titanium dome high frequency tweeter. Transformer taps: 2, 4, 8 & 16 watts @ 70.7V plus 8 ohm bypass

**SM52T**

Model SM52T loudspeaker system offers quality sound reproduction in applications where increased efficiency is required in a compact package. System components consist of a highly efficient 5 1/4" woofer and a FerroFluid cooled, titanium dome high frequency tweeter. Transformer taps: .94, 1.9, 3.7, 7.5, 15 & 30 watts @ 70.7V plus 8 ohm bypass

**SM82T**

The SM82T is the perfect choice when increased output and tighter pattern control (65Hx65V) is required in a surface mount speaker. System components consist of a highly efficient 8" woofer section and 1" exit titanium compression driver. Transformer taps: 1.9, 3.8, 7.5, 15, 30 & 60 watts @ 70.7V plus 8 ohm bypass

Models SM42T, SM52T and SM82T each include an internally mounted 70.7V / 100V line matching transformer with screwdriver adjustable tap selection for use in distributed sound systems and an 8 ohm transformer bypass setting for direct coupled applications. Input is via a convenient 2-pole binding post capable of accommodating two 14-gauge stranded wires. An input section cover with rubber wire grommet (SM52/82T) provides additional security and weather resistance.

Atlas Sound TRX WAVEGUIDE™ is a mathematically conceived, advanced design of the high frequency director to optimize vocal and musical clarity. The constant directivity technology provides smooth, accurate, and even sound coverage in both vertical and horizontal mounting positions for the SM series speakers. The SM42T and SM52T speaker systems feature coverage patterns of 90° H x 90° V. The SM82T has a 65° H x 65° V coverage pattern. High frequency components in the SM Series are also protected by the Atlas Sound PolyGuard™ circuit.

PM Series

Tuned & Ported Pendant Mount Speaker Systems

- Easy Installation Via Suspended Cable Mounting (Included) or Optional Pipe Mounting Using Standard Ceiling Fan Hardware
- Attractive Cylindrical Enclosure Will Compliment Any Décor
- Top Cover Blends Perfectly with Enclosure to Conceal Interconnect - Providing a Very Clean Appearance
- Input Terminal Connection with 70.7V Taps and 8Ω
- Integrated High Performance Atlas Sound Loudspeakers in Pendant Mount Enclosures
- Available in White or Black

The Pendant Mount series from Atlas Sound provides the clean and popular look of drop speakers for restaurants, bars, shops, and other modern design commercial installations. The PM series also offers a solution for ideal speaker placement regardless of the ceiling height or angle with the same high reproduction and performance levels as Atlas Sound's other speaker designs.



PM4FA & PM8FA

The PM4FA and PM8FA loudspeakers have familiar response and excellent dispersion because they utilize the successful Atlas Sound Strategy Series® FA series drivers. The 4" PM4FA features the FA134 high performance driver while the 8" PM8FA employs the popular FA138 loudspeaker. **Both are ideal for both music and paging applications in specifically tuned and ported enclosures** for upscale performance in retail and hospitality applications.



PM8GD

PM8GD systems include the economical 8" GD87 coaxial driver for installations when high density speaker counts are required to provide accurate response and high efficiency. Perfect for page only applications, the PM8GD fits into any budget with particular coverage pattern needs. Like all PM series speakers, 3 meters of cable and mounting hardware are included.



PM8CX

For ultra high ceilings, up to 30', the PM8CX **employs the Atlas Sound 8CXT60 coaxial compression driver. With excellent efficiency exceeding 96dB at 1W/1M and a desirable 90° conical coverage pattern** in the 2kHz octave band, the 8" PM8CX loudspeaker system provides performance in difficult height installations and dispersion requirements. Features 70.7V taps at 1.9, 3.8, 7.5, 15, 30 & 60 Watts plus 8Ω direct input.

Steel City® Hands-Free Swivel Hanger system allows quick install of the Atlas Sound PM Series without the need for an extra set of hands. The patented hanger design allows the fixture to be set in place while giving users access to the conductors while wiring is being completed. The Hands-Free Swivel Hanger can support a fixture up to 50 pounds and is ideal for gyms or other commercial sites. Use with any length of 3/4" MPT pipe.

Specify model SHHF3/4 for 4 square enclosures or SHHFR3/4 for round / octagon enclosures. SHHF3/4 & SHHFR3/4 NOT AVAILABLE DIRECT FROM ATLAS SOUND. Available from most any electrical supply warehouse.

Strategy Series® Garden & Landscape Speakers



ATS183GS

- In-Ground and Surface Mount Versions Available
- Extreme Durability
- High Fidelity, Wide Coverage Sound
- 70.7V and 8Ω Models
- 5-year Warranty
- Green Finish Blends Well Into Most Landscaped Areas

Atlas Sound Strategy Series® Garden and Landscape speaker systems are perfect for any commercial/residential application where rich sound and high durability is required such as outdoor malls, theme parks or hotels.

The enclosure is constructed of weather-resistant, rotationally molded HDPE material to ensure the unit will maintain its appearance for years to come.

For surface mount (patio / walkway) applications, use ATS183GS or ATS183GS8.

For burial applications, use ATS183GL or ATS183GL8.

Models are available with a selectable external tap 32 watt, 70.7V line transformer (HT327) or without transformer for direct coupled 8Ω operation (indicated by "8" in part number suffix).



ATS183GL

The loudspeaker utilized is the FA138 Strategy Series® 8" coaxial driver. This driver features a polypropylene cone with rubber surround for optimal weather resistance, 3.4" Mylar dome tweeter for excellent high frequency reproduction and a 1½" voice coil with powerful 21oz magnet for 70 watts of power handling.

Modular design allows for a two-phase installation:

Phase One: the base may be installed (surface mount or burial) with wiring run to the enclosure. A protective, high visibility cover (included in the package) may be installed over the base at this time. This cover helps keep debris from falling into the enclosure and also marks the loudspeaker location to help prevent landscape equipment operators from damaging the enclosure.

Phase Two: The sound contractor returns to install the loudspeaker head unit (which is packaged in a separate carton). This multiple step process protects the visual portion of the device from being damaged during the construction / landscaping process, and also eliminates potential for theft from the construction site.

Strategy Series® Rock Speaker

Atlas Sound's ROCKFA62T-BR brings Strategy Series® sound quality to the great outdoors by packaging the proven performance of model FA136, 6" driver in a specially designed, natural looking rock-brown enclosure. An internal 32 watt 70.7V / 100V transformer is terminated to a 24" direct burial rated pigtail that includes conductors for all transformer taps as well as a direct connection for 8Ω operation. The side firing transducer allows the installer to aim sound at targeted listening areas. 30' spacing between loudspeakers will give good uniform coverage for most applications. For higher noise environments or where stereo imaging is desired closer spacing and/or additional devices may be required. Please contact Atlas Sound Tech Support for design recommendations.



ROCKFA62T-BR

Strategy One Series® Loudspeakers, Grilles, & Enclosures

General Description

Strategy One Series® loudspeaker systems (U.S. Patent #5206464) uniquely combine full-frequency response, cost-efficiency, aesthetics, and easy installation into one complete assembly. Strategy One Series® systems are offered in 4", 6", and 8" sizes enabling owners, architects, contractors, and consultants to meet varying sound system requirements. **UL 1480 listed for general signaling (non-fire) when used in combination with UL listed enclosures and baffles.**

Strategy One Series® System Components

Loudspeakers	Choose from 4", 6", and 8" Coaxial or Full-Range Models
Enclosures	Easy-To-Install, Front-loading Enclosures Secure with Adjustable Clamps
Grilles	Architecturally Pleasing Grilles Push-Mount for Easy, Hardware-Free Installation
Mounting Accessories	Choose Tile Bridge, Plaster / Mounting Ring or Rough-In Trim Ring

4" Sample System



6" Sample System



8" Sample System





FA134T87



FA136



FA138T327



FA114T72



FA116T72

4" Loudspeakers

FA134T87 / FA114T72

Strategy Series® 4" loudspeakers are ideal for low-ceiling, low-profile applications where high-fidelity and broad dispersion are required. It features a polypropylene cone with a SBR surround, a ¾" post-mounted dome tweeter, and a 10 oz magnet to handle 25 watts with excellent low frequency reproduction and smooth extended response. The FA114T72 is a 10 watt, full-range loudspeaker equipped with a paper cone and 10 oz magnet.

6" Loudspeakers

FA136 Series / FA116T72

The 6" Strategy Series® loudspeakers combine the high performance of an 8" loudspeaker with the wide-dispersion of a 4". The coaxial 50 watt FA136 delivers excellent fidelity and response. FA136 Series are UL listed and feature a polypropylene cone woofer, 14 oz magnet, SBR surround, and a ¾" post-mounted dome tweeter with PEI diaphragm for outstanding performance. The full-range FA116T72 is a 25 watt loudspeaker comprised of a 6" driver, dual paper cones, half-rolled polyether foam surround, and 10 oz ceramic magnet.

8" Loudspeaker

FA138 Series

High-performance and extended sound pressure levels make the Strategy Series® 8" loudspeakers ideal for prestigious venues or high / vaulted-ceiling applications. The 100 watt, FA138 is Atlas Sound's premium 8" coaxial loudspeaker; is UL listed and incorporates a polypropylene cone woofer, a SBR surround, a 1½" vented Kapton™ voice coil, a 21 oz magnet, and a ¾" PEI dome tweeter for clean and powerful weather-resistant performance.

Strategy One Series® Enclosures

FA97 Series / FA95 Series

Extended Low Frequency FA97 Series and Economy FA95 Series enclosures are acoustically matched to Strategy Series® loudspeakers for resonance-free operation. Units include three adjustable clamps that rotate and secure into ceilings up to 1¼" thick or can be installed by conventional screw mounting. 4", 6", and 8" sizes are 22-gauge CRS, and undercoated. For improved low frequencies, the FA97 Series is lined with 5/16" high-density batting.



FA95-4



FA97-4



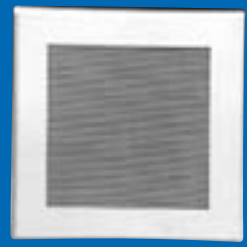
FA51



FA720



FA730



FA170

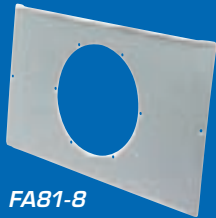
Strategy One Series® Grilles

FA51 / FA720 / FA730

Provide a clean and hardware-free appearance. All grilles are equipped with three, welded and serrated studs for push-on installation to enclosures or mounting rings.

FA170

Square models feature an exclusive designed subplate with slotted cut outs for independent grille rotation regardless of mounted back box position. Three push-mount grille studs rotate within the slotted cutouts as the grille is turned.



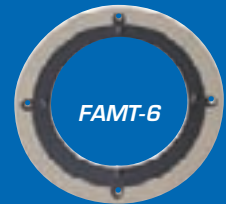
FA81-8



FAPR-4



FATR-4



FAMT-6

Strategy Series® Mounting Accessories (Optional)

FA81 Series

Tile bridges prevent ceiling tile sag by distributing the loudspeaker assembly weight to the ceiling's support members. The FA81 Series offer 4", 6", and 8" sizes in 24-gauge electrogalvanized steel for FA95 Series and FA97 Series enclosures and the FAPR Series plaster/mounting rings.

FAPR Series

Plaster / mounting rings are used to mount Strategy Series® loudspeakers into applications where a backbox cannot be used or is not desired.

NOTE: Strategy Series® mounting configuration requires that an enclosure or plaster mounting ring be used to mount both the speaker and grille.

FA-TR Series

Trim rings and rough-in brackets in 4", 6", & 8" sizes allow easy installation of enclosures / mounting rings for Strategy Series® loudspeakers. Units install prior to drywall and mark cut-out and pre-wire location. Trim ring mounting ears span 25⁵/₈" and accommodate 3/8"-1¹/₄" drywall. Mounting holes match 16" and 24" stud centers.

FAMT-6

Mounting ring / adapter for retrofit applications allows a 6" cone or horn loudspeaker to mount an 8" enclosure and/or baffle.

Pre-Assembled Strategy Series®

The Strategy Series® I speaker package is for contractors who want premium quality products in a simple to order and install package as the speaker and back come pre-assembled, ready to install out of the box. Each package contains (2) tile bridges, (2) attractive 720 Series grilles and (2) speaker/ enclosure assemblies. The FAP136T87-720 includes the highly efficient HT87 8W transformer pre-wired and terminated to a BX box.





FC104T



C803A

High-Performance 4" & 8" Cone Loudspeakers

FC104T incorporates model FC104 loudspeaker, factory assembled with a special version of the model HT87 high performance transformer. This transformer includes taps from ½, 1, 2, 4 & 8 watt taps @ 70.7V. **Model FC104T offers a wide dispersion angle, which reduces the number of loudspeakers necessary to achieve total coverage in low-level distribution systems.** All other specifications are identical to model FC104.

Atlas Sound High-Performance loudspeakers are the standard for professional sound reinforcement and music systems in offices and retail establishments, auditoriums, meeting rooms, houses of worship, restaurants, clubs, transportation terminals, and recreation / sports centers throughout the world. Selection includes standard 4" and 8" coaxial models. **Units are all UL listed.** Available in 8Ω versions or with factory-installed, constant-voltage transformer to meet individual project requirements.

Available Transformers:

FC104: LT72 & HT87

C803A: HT47, LT70, LT72, HT87, & HT167

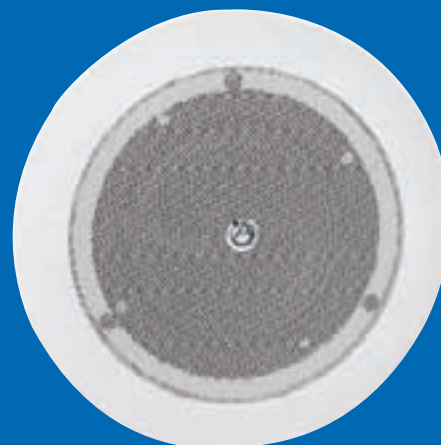
C10A: LT25, LT70, & LT72



DLS4
(Mounted on FATR-4)



DLS4
(Mounted on 81-4)



DLS4

Compact 4" High Efficiency Speaker System

The DLS4 was specially designed for optimum use in low ceiling paging and background music applications where wide dispersion, high efficiency, and ease of installation are required. **The DLS4 is perfectly suited for use in airports, train stations, retail stores, and hospitality applications.**

A unique, patented tap selector switch design allows for easy system tuning. A full selection of taps up to 8 watts as well as an 8Ω bypass setting is included for maximum system versatility. **This switch "knob" also functions as a diffuser cone, providing smooth, even dispersion of the high frequency content from the center of the 4" driver.**

The easy to use DLS4 "Dog Leg" mounting system works with several popular Atlas Sound hardware combinations for use in new or existing drywall or acoustic ceilings with or without conduit. For mineral tile applications the popular FA81-4 tile bridge has been modified to allow "twist lock" installation of the economical CS95-8 Plenum rated enclosure.

- Small Footprint and Press-Fit Grille Gives Discrete Installed Appearance
- Tap Selector Switch Located Behind Speaker Magnet with Shaft Through Center of Cone. Selector Knob Doubles as a Dispersion Cone and Allows Tap Selection to be Done After the Speaker is Installed in the Ceiling
- 8 Watt, High Efficiency Internal Transformer (May be Bypassed by Tap Selector Switch)
- Works in Almost Any New or Retro-Fit Ceiling Application with Atlas Sound Hardware
- UL 1480 General Signaling Approved
- UL 2043 When Used with Approved Enclosure (CS95-8 Recommended)



12CXT60



8CXT60



C12BT60

8CXT60, 12CX, & 12CXT60

- 1" Exit True Compression High Frequency Driver Coupled to a Specially Designed Conical Wave-Guide Horn Provides Exceptional Output & Accurate High Frequency Reproduction
- High Efficiency Cone Woofer is Optimally Matched with a Specially Designed Crossover to Ensure Even Transition Between Components
- 90° Conical Dispersion (@ 2kHz)
- Available With Factory Installed 60 Watt 70.7V / 100V Transformer (8CXT60 & 12CXT60)
- Perfectly Suited For Use With Atlas Sound "Q" Series Enclosures

Atlas Sound compression coaxial loudspeakers are optimized for high-ceiling applications such as arenas, convention centers, gymnasiums, and auditoriums. The extreme high efficiency and higher "Q" provide the increased available SPL often required in these high ceiling applications.

Models 8CXT60 & 12CXT60 include a high efficiency built-in 60 watt 70.7V / 100V transformer (Taps @ 7.5, 15, 30, & 60 watts). (12", 8Ω version also available, Atlas Sound Model 12CX)

All models are designed to work optimally in select Atlas Sound Q Series high volume enclosure allowing for a complete high output solution.

C12BT60

- Factory-Installed, 60 Watt Line-Matching Transformer to Match 70.7/100V Lines (Bypassed for 8Ω Applications)
- Heavy Duty Cast Basket for Added Strength in High Power Applications
- Newly Designed Post Mounted 1" Tweeter Section with Unique Mounting Plate that Maximizes the Tweeters Frequency Response by Reducing Phase Cancellation
- Accurate Midrange Reproduction and Overall Voicing
- 90° Conical Dispersion in 2kHz Oct Band

The cost effective 12" Atlas Sound C12BT60 coaxial loudspeaker complements 8CXT60, 12CX, and 12CXT60 compression drivers in high ceiling applications for full range music and voice reproduction.

The C12BT60 combines a 12" low frequency driver and a 1" high frequency, post-mounted tweeter with a unique tweeter mounting plate to reduce phase cancellation from the woofer cone. A highly efficient passive crossover network is built in for proper frequency selection between the woofer and tweeter and both feature permanently aligned voice coils (1.5" and 1" respectively) to assure distortion free performance. A factory installed 60W variable tap line transformer is included with 8Ω bypass.

The C12BT60 works in the smallest volume Q Series enclosure (Q4412 – 2ft²) with a 68Hz 3dB down point or used with larger volume enclosures for extended low frequency response. The inexpensive Atlas Sound model 95-12 round enclosure with model 61-12 baffle may also be used.

SD & GD Speaker Packages

Use Atlas Sound's cost effective, 8" diameter, multi-purpose, loudspeaker packages for quality music reproduction or paging in any commercial, retail, industrial, or institutional application.



- SD72: 8" 10oz Dual Cone Speaker Only
- SD72W: 8" 10oz Dual Cone Speaker with 62-8 Style Grille
- SD72WV: 8" 10oz Dual Cone Speaker with 62-8 Style Grille and Center Mounted Volume Control
- Factory Assembled High Quality 25V/70.7V Transformer
- Provides Familiar Response & Performance
- SD72 Dimensions Match Model C10AT72
- Designed to Work With a Wide Variety of Atlas Sound Tile Bridges & Enclosures
- All Models Individually Packaged for Stocking and Ordering Convenience

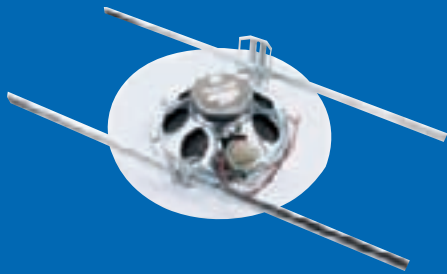
The speaker used in the SD72 package is the next generation of Atlas Sound high performance loudspeakers. The similarity in sonic qualities to the preceding C Series speakers ensures that contractors and designers will know exactly what to expect when they purchase the SD72 package. The SD72 includes a 10oz magnet and fully assembled 5W dual voltage transformer. Model SD72WV includes a 50Ω baffle mounted potentiometer for applications requiring local volume control. Primary taps are ¼, ½, 1, 2, & 5 watts.

- GD87: 8" Coaxial, 16 Watt, Loudspeaker Only
- GD87W: 8" Coaxial, 16 Watt, Loudspeaker with 62-8 Style Grille
- Factory Assembled High Quality 8 Watt 70.7V Transformer
- GD87 Dimensions Match Model C803AT87
- Designed to Work With a Wide Variety of Atlas Sound Tile Bridges & Enclosures
- All models individually packaged for stocking and ordering convenience

The GD87 offers proven performance with extended high frequency response. The similarity in sonic qualities to the preceding C803A Series speakers ensures contractors and designers will know exactly what to expect when they purchase the GD87 package. The loudspeaker is matched with a high efficiency 8W 70.7V transformer with a maximum insertion loss of 0.6dB. Primary taps are 1, 2, 4, & 8 watts.

SD72(W) & GD87W

Speaker / transformer is fully assembled onto an attractive CRS white powder coated grille (model 62-8) with standard mounting holes to accommodate most Atlas Sound 8" enclosures, trim rings, and tile bridges. This baffle includes welded speaker mounting studs making for a more discrete installed appearance. All mounting screws are included in the package.



EZHD72W

EZHD72W

Patented EZ Mount assembly is designed for use in standard 2' x 4' lay-in ceiling installations when backboxes are not required. EHD72W has pre-mounted brackets and installs quickly with wingnuts to the support rails provided.

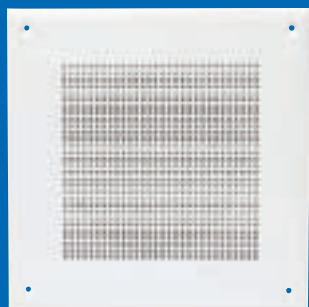
Note: EZ Series will not accept an enclosure. For installations that require a backbox, see EZ Mount enclosure system on page 61.



FD25W

HD Series / FD Series

Industry-favorite loudspeaker packages for ceiling installations. Packages include loudspeaker with 5 oz (FD) or 10 oz (HD) magnet, choice of transformer and grille.



D161-8



G161-8

D Series / G Series

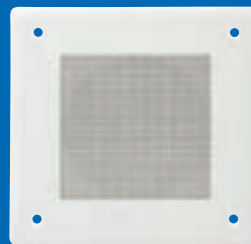
Quality loudspeaker packages for ceiling or wall installation include loudspeaker with 10 oz, D Series, or 5 oz, G Series, magnet and dual-voltage transformer.



L20-400-7

Designed for systems requiring secondary supervision using signal presence method. When the primary voice coil is excited the secondary voice coil induces output signal to a separate, dedicated supervisory line indicating "good" voice coil integrity back to the system.

Use caution when using L20-400-7 for dual source applications (separate amps feeding each voice coil in a paging or music application). No isolation between voice coils is provided (nor possible) so signal bleed between systems is possible.



B161-4



EZB161-4



B51-4



BT720-4-T47

B Series

The popular FC104 high-compliance 4" loudspeaker is available with transformer premounted to a selection of standard screw-mount and labor-saving torsion spring (T) grilles. For additional convenience, time and cost savings, two models are available with the patented EZ Mount installation system for applications which do not require a backbox.

Model	Transformer	Baffle
B51-4	25V/70.7V	51-4
B161-4	25V/70.7V	161-4
EZB161-4	25V/70.7V	T161-4 with Mounting Rails
BT720-4	25V/70.7V	T720-4
BT720-4-T47	70.7V	T720-4



DT12

1' x 2' Drop-In Ceiling Speaker

- Easy to Install 1' x 2' "Lay in Design"
- External Tap Selector Switch
- Integral E.O. Box for Conduit or Plenum Wire Termination
- Low Profile Conical Enclosure
- Compact, 2-Unit Master Pack Saves Warehouse Space

The DT12 from Atlas Sound combines ease of installation with superb intelligibility for speech and music reproduction. The 1' x 2' footprint allows quick installation into 2' x 2' or 2' x 4' acoustic tile ceilings. **The integral tile bridge rail may be repositioned to either side of the unit for maximum installation flexibility.** The E.O. Box (with cover) is smartly positioned on the side of the conical enclosure to facilitate rigid or flexible conduit. An external tap selector switch (located on the side of the enclosure) allows for easy system tuning by providing quick installer access to the 70.7V tap settings ranging from .25 to 4 watts plus 8Ω.

A neutral white finish on the perforated baffle and edge support ensures the DT12 will blend in with any acoustical tile material.

The DT12 is perfect for applications in the education market including classroom paging and multi-purpose rooms. The DT12 is also perfectly suited for background music/paging in offices and retail settings.



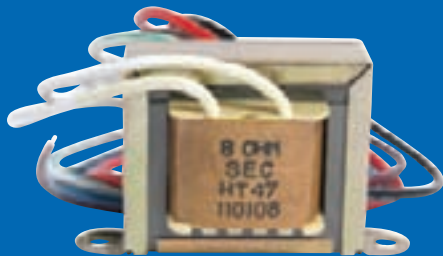
HT-327



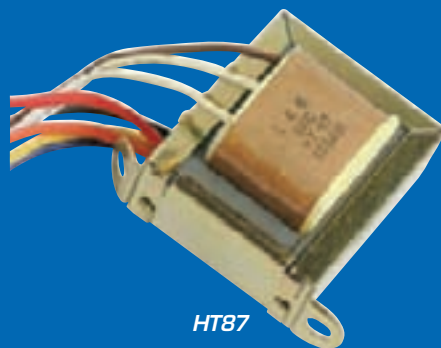
HT167



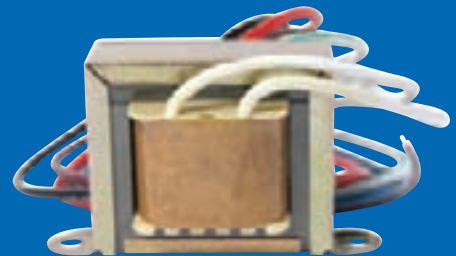
AF140



HT47



HT87



HT42

Constant-Voltage Transformers

25V, 70.7V, & 100V Transformers

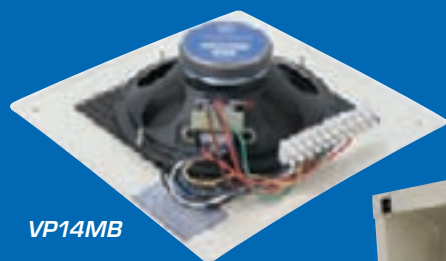
Selection of single voltage or combination use constant-voltage line transformers includes models for professional and commercial sound and for intercom (45Ω) applications. Transformers with 8 or 4Ω impedance mount standard 4" or 8" loudspeakers without additional hardware except Model HT167 which may require a bracket. (Model CX188329) For convenience and cost savings, Atlas Sound loudspeakers can be ordered with factory-installed transformers. Consult loudspeaker specifications or technical service for proper loudspeaker transformer combinations to meet your installation requirements. (Transformers for compression drivers are listed on page 50)

Atlas Sound transformers can be used to solve a wide variety of impedance-matching and voltage step-up/step-down problems. They serve as an efficient method for matching impedance or voltage levels between power amplifier outputs and loudspeaker loads at high power levels.

A transformer transfers electrical energy from one circuit to another through inductively coupled conductors known as windings.

Besides Stepping Up/Down The Voltage, They Also Step Up/Down The Impedance Of The Amplifier's Output And Speakers. This transformers are the basis for 25V/70.7V/100V systems because they step up/down the voltage and impedance of the amplifier's output and speakers. This allows us to attach lots of speakers in parallel without causing the amplifier to "see" too low of a load at the speaker terminals.

Contact Atlas Sound for more information on transformers and their application.



VP14MB



VP14

VP14ENC



SBMS

Designed specifically for installations that may be targeted by vandals, the VP14 system from Atlas Sound provides highly intelligible speech reinforcement with the added benefit of extreme ruggedness. To address division of labor requirements components are ordered separately.

The VP14MB vandal resistant slanted wall mount baffle, finished in attractive, neutral beige, is ideal for use in high-security areas such as schools and correctional facilities. Its 14-gauge sturdy baffle construction and specially designed protective labyrinth screen protects the enclosed speaker assembly against abuse. Each package contains a high-quality 8" diameter loudspeaker with a 10 oz ceramic magnet and pre-assembled 25V / 70.7V transformer with five power taps terminated to a Euro block style connector. **This connector includes 3 empty blocks to allow through connection of other devices such as call switches or intercom phones without the need for wire nuts.**

The VP14ENC 16-gauge enclosure for use with model VP14MB baffle includes an adapter to comply with Wiremold™ 500 and 700 series conduit. This adapter can be installed securely through any of the knockouts that are included on all four sides of the VP14ENC. This provides a clean installation where surface mount raceways are required. All knockouts are finished completely flush before the enclosure is painted making them invisible to any would-be perpetrator.

Install the SBMS clamp-mounting loudspeaker assembly wherever paging, intercom, and background music is desired in open ceiling applications. **This ready-to-install unit combines exceptional performance and fast installation into one complete package making the SBMS ideal for use in open ceiling venues** such as: retail superstores, warehouses, light industrial facilities, multi-purpose athletic buildings, cafeterias, and convention / civic centers.

Pre-assembled unit feature an 8" dual-cone loudspeaker with a 25V / 70.7V transformer mounted within a square enclosure with matching baffle. Loudspeaker selection includes a 25 watt, 10 oz dual cone loudspeaker. Assemblies include two, easy-to-secure screw-down clamps mounted to the top of the enclosure. Clamps provide quick and easy mounting onto beams, girders, and other surfaces (max. 1/2" thick) common to open-ceiling installations. The square SBMS package includes a 734in³ (.47m²) enclosure paired with an attractive square baffle. This grille features one-piece, CRS construction. The SBMS is infinitely flexible, complying with a variety of conduit requirements. Integral knockouts facilitate 1/2" and 3/4" conduit where required by code and integral ROMEX®-style connector simplifies installation for applications where conduit is not required at all. Assemblies are shipped ready for installation with lead wires extending out of the enclosure through a wire-securing cable clamp. Finish is white powder coat epoxy.



WD417

WD Series

Attractive surface mounting loudspeaker packages with 5 oz magnet and choice of 25V or 25V / 70.7V transformer are mounted in a sloped baffle with black fabric grille. Model with (V) suffix includes volume control option.

Also available model 417-8WD enclosure only (no loudspeaker).



MPP4200-B



MPP4200-S

Flat Panel Loudspeakers

MPP4200

The MTX Audio Flat Panel Loudspeaker features dual 4" drivers along with a high output 30mm Teteron tweeter in a very compact vertical design to complement any flat panel display installation. 100 watts RMS power handling. Mounting bracket is included. Choice of black, white or silver finish. Sold as "each."



SW1515

Powered Subwoofers

The MTX Audio powered subwoofer systems add high quality low frequency reproduction for boardroom presentation systems or home theaters. With up to 250 watts of room shaking power, MTX Audio powered subwoofers boom, roar, thump, thunder, and more.

The SW1010, SW1212 and SW1515 with "Active Compression Circuitry", deliver gut-wrenching low frequencies at seriously high SPL levels without breakup or coloration.



ADZIC

ADZIW

Musica™ "Add-A-Zone" Kits

Designed to allow easy installation of in-wall or in-ceiling distributed 8Ω systems for small office or home systems using standard 8Ω consumer style receivers. Kit includes two in-ceiling (ADZIC) or in-wall speaker systems (ADZIW), one 50 watt impedance matching volume control, speaker input wall plate, and 100' of 16-2 speaker wire.

Cone Loudspeakers, Systems, & Subwoofers

ThunderPro 2 Series



MTX's ThunderPro 2 Series consists of single and dual 12" woofer models matched with our X-radial designed horn loaded high frequency tweeter designed to provide uniform sound dispersion, and coverage area, with excellent sound quality. The TP112 speaker is designed to perform equally well in many different applications, including low to mid level live sound reproduction, public address, karaoke applications, or mobile entertainment. The speakers carrying handles, mounted to a strong, lightweight cabinet make it easily portable to use anywhere you need it. The rugged corner braces allow for upright positioning and interlock for secure stacking of multiple cabinets. The versatile 5-way binding posts and ¼" phone jack inputs make it easy to connect to any amplifier. Single woofer models can also be pole-mounted to raise the sound stage to ear level.



All Weather In-Ceiling System

H620AW

Designed for harsh, wet environment indoors or out, the AW series from MTX® will provide excellent durability and great sound. For commercial 70.7V applications model HT87 line matching transformer is recommended.

In-Wall & In-Ceiling Speakers and Powered Subwoofers by MTX Audio

All models include: white aluminum mesh grilles (paintable), stainless steel hardware, push-pin terminals, install-ready pre-assembly, and an industry leading 10 year warranty. All models are 8Ω.



HT8253W

"Best" 8" In-Wall System

HT8253W

Outstanding, professional performance, perfect for boardroom applications. 3-way design provides outstanding clarity with full range sound. Video shielding allows use near CRT screens.



HT825W

"Better" In-Wall Systems

HT625W & HT825W

These superior in-wall speakers accurately reproduce even the most demanding music. The soft swivel dome tweeter construction uses a neodymium magnet. IR (infrared) knockout is also provided for use with the Atlas Sound M-1A repeater.



"Good" In-Wall Systems

CD520W & CD620W

True performers, with a 3/4" balanced dome tweeter and poly woofer. These value packed speakers are built to please.



CD620C

In-Ceiling Audio Systems

CD520C, CD620C, & CD820C

MTX Audio's in-ceiling speakers feature materials chosen for two specific reasons: superior sonic qualities and weather resistant properties (butyl rubber surrounds, aluminum grilles, and stainless steel hardware).



H625WE
(Close Up)

High-Performance In-Wall & In-Ceiling Systems with Integral Metal Enclosure

H625CE & H625WE

MTX® CE/WE enclosed in wall and in ceiling systems are perfect for commercial applications such as hotel suites or conference rooms where sound must be contained between rooms. High performance components are matched with a tuned metal enclosure to insure excellent sound fidelity. Models include rough in kit for easy installation in new construction.



HTS28W

In-Wall Subwoofer System

HTS28W

Dual 8" subwoofer with stereo input, passive crossover network. Sold as single units.

New Construction Rough-In Kits

Hole Providers for MTX Audio Loudspeakers SOLD IN MASTER PACK QUANTITIES OF 12 UNITS ONLY.



HT2625W

Center Channel System

HT2625W

A perfect match with HT8253Ws for 5.1 boardroom and home theater systems. Dual 6 1/2" system with dome tweeter. Unit is magnetically shielded. Sold as single units.



Assorted New Construction Rough-In Kits

In-Wall and In-Ceiling Cone Loudspeaker Systems, & Subwoofers

A-Bus by MTX Audio™

A-Bus was created to simply and affordably distribute music in commercial and home applications. A-Bus works with inexpensive 8-conductor (CAT5) wire to distribute audio, infrared, status and system power to the A-Bus in-wall controller / amplifier.

A-Bus Hubs

The A-Bus Hubs are the core component of the distribution system. **The hub is responsible for distributing audio signal, system power, and status indication to A-Bus power modules installed in rooms throughout the installation.** Hubs are also capable of sending IR commands from the power modules back to the source components. Hubs are usually located near the main sound system (Amplifier/Receiver, CD, DVD, Tape, Cable, etc.). ABUS-HUB1X2 has 1 input and 2 zone outputs, ABUS-HUB1X4 has 1 input and 4 zone outputs and ABUS-HUB4X8 has 4 inputs and 4 zone outputs available on 8 output ports. Each hub includes an expansion port (IN/OUT) so multiple hubs can be connected to expand the system.

A-Bus Powered Wall Mount Volume Controls

The MTX Audio ABUS-VC2 volume control power module is specifically designed for use with the ABUS-HUB1x2, ABUS-HUB1X4 and ABUS-HUB4X8 Hubs. The ABUS-VC3 Keypad Volume Control Module was designed to work with the ABUS-HUB4X8 intelligent A-Bus Multi-Source Multi-Zone Hub using standard A-Bus commands to provide volume control and source selection. **Both models incorporate a stereo amplifier with a level control that can power a pair of speakers in each room.** Units come packaged with three colors of Decora style wall plates, inserts, and buttons (white, ivory, and bone). Volume control systems include "credit card" sized remote for zone On/Off, source selection and level control.

ABUS-LS1

Local Input Module provides input capability for sources such as TV sound, MP3 player, computer sound cards, etc. located in the zone. The Local Input Module, ABUS-LS1, automatically switches to the local input when a local source is detected. 30 seconds after the local source ceases, the Local Input Module automatically reverts to the main input source.

ABUS-MS1

Use with ABUS-HUB1X4 to expand single source input to 4 inputs.

ABUS-40

Four amp power supply – only required for ABUS-HUB4x8 to provide power to port outputs 5-8.



ABUS-LS1



ABUS-VC3



ABUS-MS1



ABUS-HUB4X8



ABUS-VC3 (Installed in Wall)



APX40TN

Conservatively rated 40 watts, constant-directivity paging loudspeaker for use in public address or paging applications. Environment-resistant units feature a 60° x 40° (±10°) constant-dispersion pattern across the controlled frequency band of 1.25kHz – 10 kHz. The rotating bell pivots in precise 15° increments for exact on-site positioning of projection angles. **A triple lock security mounting method saves installation time and provides long-term stability.** APX40TN is equipped with an internal 25V / 70.7V / 100V transformer with screw terminal connections made beneath the rear cap. Rear cap will facilitate armored cable. Loudspeaker mounts to die-cast zinc base. Pre-mount the base to a standard 1-gang, 2-gang, or 4" square E.O. box. If replacing AP Series speakers, simply remove the APX base and mount to the Omni-Purpose® bracket. Finish is neutral. Optional Replacement Bracket, APXBK-N, is also available.

Value Features

- Rotating Bell
- Triple Lock Security
- Quality Materials

Easy Installation

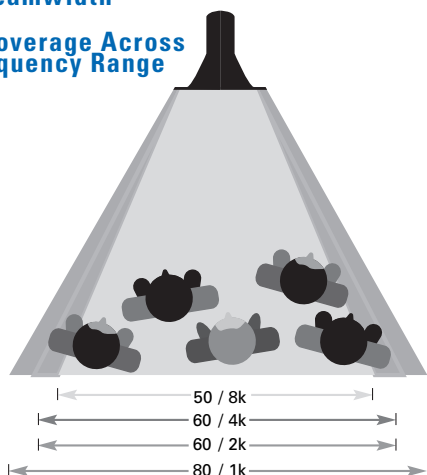
- Universal base mounts 1-gang, 2-gang or 4" sq. E.O. boxes.
- Includes 40 watts tap @ 70.7V/100V.

Predictability

- Clear Messaging and Music Consistent Beamwidth Control
- Fewer Speakers to Provide Quality Communications

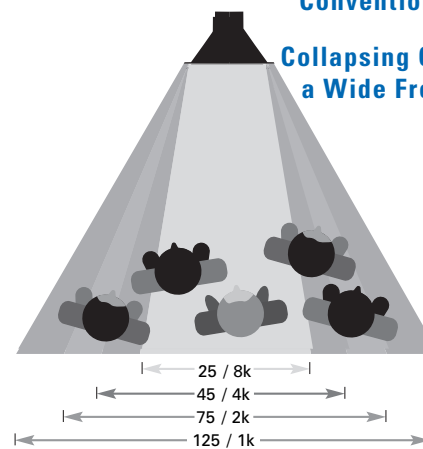
APX Beamwidth

Controlled Coverage Across a Wide Frequency Range



Conventional Beamwidth

Collapsing Coverage Across a Wide Frequency Range



* Typical exponential coverage illustrated

The Industry's Only Constant Directivity Re-Entrant Horn

New CD Series horns from Atlas Sound provide greatly improved uniform sound coverage compared to conical designs. With all models the horizontal coverage pattern is precisely controlled over a frequency range. For mounting, the proven CJ46 style heavy-duty steel mounting bracket is utilized with positive lock for horizontal and vertical positioning in single or stacked multi-unit clusters.

Construction is polyester resin and glass-fiber laminate integrally molded to a die-cast zinc throat section.

Recommended Atlas Sound Drivers: PD75T, PD30 Series, PD-5 Series, PD60 Series.

Beamwidth is defined as the -6dB point(s) from center axis.

CD42

Horizontal Beamwidth: 40°, ±10°, 800Hz – 10 kHz

Vertical Beamwidth: 20°, ±10°, 2kHz – 10 kHz

CD64

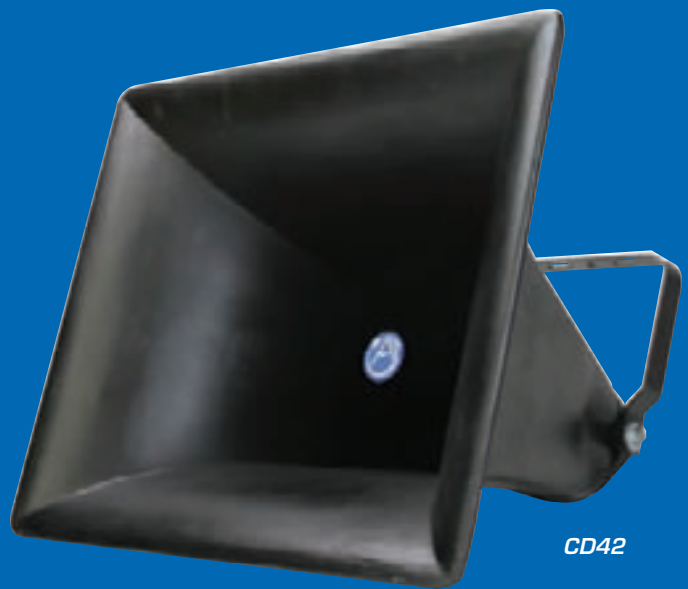
Horizontal Beamwidth: 60°, ±10°, 600Hz – 6 kHz

Vertical Beamwidth: 40°, ±10°, 1000Hz – 7 kHz

CD94

Horizontal Beamwidth: 90°, ±10°, 900Hz – 6 kHz

Vertical Beamwidth: 40°, ±10°, 1000Hz – 10 kHz



CD42



CD64



CD94

PD75T

Atlas Sound's new PD75T compression driver is the perfect compliment for the CD series of constant directivity re-entrant horns. With

increased power handling and extended high frequency response the PD75T is the perfect solution for applications such as race tracks, sporting venues and large scale mass notification systems.





AH4060S (Installed at Firebird Raceway in Chandler, AZ)

AH Series Stadium Horns

The AH Series Stadium Loudspeakers offer the most often requested coverage patterns while providing excellent intelligibility for the most challenging environments including large auditoriums and sport fields.

With a complete family of 8", 12", and 15" 2-way systems, designers and specifiers can select models for whatever SPL is required with the peace of mind that all units will provide outstanding pattern control.

90° H X 90° V models (8" and 12" models only) are suggested for shorter loudspeaker to listener distances and/or wider coverage requirements such as bleacher seating where the speaker may be in close proximity to the crowd.

65° H X 65° V (8", 12" and 15" models) square coverage pattern models are perfect for down-firing applications including convention centers.

90° H X 40° V patterns (8", 12" and 15" models) work well when longer speaker to listener distances require a tighter vertical coverage pattern. 15" AH series models offer an even slightly tighter pattern of 50° H X 40° V. This device is often mounted atop football field press boxes with the device aimed at the visitor side in conjunction with wider coverage pattern models to cover the home side bleachers.

Common Design Features:

Multiple stainless steel mesh screens protect internal drivers from weather and pest damage. A primary rodent screen provides protection for all components, a secondary screen resides between the high frequency horn and the driver, and a third perforated screen protects the woofer.

Heavy-duty stainless steel mounting brackets are included with all models and three dropforge eyebolts are also included for overhead suspension (use only load-rated & approved hardware). For light pole mounting Atlas Sound also distributes matching accessories from Allen Products. (see page 44).

15" models AH9040S, AH6565S and AH5040S feature impressive, full range sound reproduction via a high excursion low frequency woofer and a concentrically mounted 1" exit compression driver. A highly efficient internal passive crossover network ensures proper transition between the two drivers, which collectively provide frequency response from 75Hz – 14.5kHz (±5 dB).

With an efficiency rating in excess of 102dB (1W/1M), the 15" AH Series is a perfect choice for high-energy music playback at sporting events and extended range speech reinforcement for large venue emergency notification. The 8 Ω rating allows maximum low frequency response and is a good match with Atlas Sound model CP700 amplifier. If transformer operation is required for long runs of smaller gauge cable please contact tech support for proper configuration and use of model AF140 auto-former. Termination is via rear mounted terminal block with a Plexiglas® cover for weather resistance.

The 8" & 12" 2-way models are perfect for applications where space considerations will not allow installation of the larger 15" 2-way models. All 8" & 12" models include a 60 watt, 70.7V / 100V internal transformer which is accessed via terminal block connector sealed by a weather resistant cover. Transformer may also be bypassed for direct coupled 8Ω operation.



AHSUB15S

A perfect complement to any AH Series full range device, the AHSUB15S will provide extended low frequency response to add presence to any high energy music playback system. A specially designed, rear firing 15" cast frame woofer is mounted into a high volume chamber for optimum loading and output. These design elements provide an impressive frequency response down to 55Hz (-5dB) for accurate bass response. The AHSUB15S is capable of handling up to 250 watts RMS providing output in excess of 126dB (Rated power @ 1 Meter). Three eyebolt suspension points are provided along with mounting locations to allow stacked installation of other AH models.

AHSUBSTAND

AHSUBSTAND allows the for easy installation of the AHSUB15S under bleacher seating or other areas where concrete slab mounting is possible. **Stand provides secure mounting of the AHSUB15S in a down firing configuration to maximize output performance while helping to prevent theft and weather damage.**

Holes are provided on the bracket feet for anchor points when mounting on concrete slab and additional holes are located on the frame to allow the AHSUB15S to be attached to the frame via chain or cable (Not Included) for optimal security.

Allen Pole Mount – Mounting Accessories

As a convenience to our dealers Atlas Sound is proud to provide quality mounting solutions from Allen Products to facilitate pole mounting of the Atlas Sound AH series stadium horns. Please call Atlas Sound customer service at 800.876.3333 for assistance in choosing the correct hardware for your installation. See page xx for specifications.

AP Series Professional Omni-Purpose Loudspeakers

Atlas Sound environment-resistant loudspeakers are the world standard for voice, music, and signal transmission in indoor and outdoor public address, intercom, security, and industrial signal system applications. **Cost-effective, all-purpose units incorporate high-efficiency compression drivers to project through high ambient sound levels and to cover long distances at minimum installed cost.** Models assure superior intelligibility and service reliability. Units are metal and plastic construction. AP Series transformer-equipped models include a 3-way 25V / 70.7V / 100V transformer.

Radial Loudspeaker for Suspension Mounting

APR-30AT

30 watt loudspeaker with 40° circular sound dispersion is designed for overhead installation in industrial, transportation, manufacturing, service, recreation and sports centers. Equipped with a combination 25V / 70.7V / 100V transformer with screwdriver-adjust power selection including a 45Ω tap. Provision for suspended ceiling installation is included. Finished in gray baked epoxy. Includes conduit adapter.



APR-30AT

Industry Standard Omni-Purpose Loudspeakers

AP-15 / AP-30 Series

Patented environment-resistant, double re-entrant loudspeakers are available in 15 and 30 watt versions for medium and high-powered sound distribution. Selection includes 8Ω models for auxiliary and mobile loudspeaker use and 70.7V / 100V transformer models with screwdriver-adjust power tap selection for a variety of sound and signaling applications. All include the Omni-Purpose® bracket for vertical/horizontal positioning and have provisions for surface/strap mounting to pillars and I-beams. Finished in gray baked epoxy. Model AP-30TC also available in Beige finish.



AP-15

Bi-Directional Twin Horn

APT-34AT

Surface-mounting loudspeaker with bi-directional sound dispersion provides concentrated coverage in corridors, stairwells and walkways in commercial, institutional and industrial applications. **Twin horn assembly delivers 30 watts of power with a single compression driver and provides 100° sound dispersion in each direction.** Includes the Omni-Purpose® bracket and provisions for surface / strap mounting. Equipped with a combination 25V / 70.7V / 100V transformer with screwdriver-adjust power selection including a 45Ω tap. Finished in gray baked epoxy. Includes conduit adapter.



APT34AT

Recessed Flange-Mounting Loudspeakers

APF Series

High-efficiency, 15 watt loudspeakers are designed for recessed installation in sound and alarm system applications. Flange mounting units may be installed flush to a panel or recessed into wall or ceiling surfaces. For aesthetic consideration and retrofit convenience of existing cone loudspeaker installations, models will accept any 6" or 8" diameter recessed mounting baffle (Note: 8" baffle mounting requires model FAMT-6 mounting flange. See APF Series accessories, this section.) The APF-15 installs inside a 4" deep opening. The APF-15T fits inside a 5½" deep minimum opening and includes combination 25V / 70.7V / 100V transformer with screwdriver-adjust power tap selection. Finished in gray baked epoxy.



APF-15T

Exponential Loudspeaker

APC-30T

High-power 30 watt loudspeaker with extended low frequency response is equipped with a wide-angle molded plastic bell for sound directivity. Transformer includes a screwdriver-adjust power selection with a 45Ω tap for intercom and talk-back use. It also features the Omni-Purpose® bracket for vertical/horizontal positioning and have provisions for surface/strap mounting to pillars and I-beams. Finished in gray baked epoxy. For constant directivity performance, see APX Series.



APC-30T

7.5 Watt Loudspeaker

WR-5AT

Environment-resistant loudspeaker provides the advantages of music reproduction, high-efficiency voice / signal transmission and long-lasting service reliability. Recommended for background / foreground installations in hotels, schools, pools and recreational facilities. Assemblies are housed within a metal, weather-resistant enclosure. Finished in gray epoxy.



WR-5AT

Utility Paging Re-Entrant Horn Loudspeakers

GA Series

Double Re-Entrant 15 and 30 watt utility horns offer economical and sound performance for general paging and music reproduction. Models GA-15T and GA-30T feature a combination 25V / 70.7V line transformer with multi-position knob for selecting power taps. In addition, loudspeakers include wiring for an 8Ω connection. Units are ideally suited for installations in commercial buildings, sports facilities and any applications where direct sound coverage is desired. GA Series models are constructed of weather resistant, high-impact plastic for indoor / outdoor installations and feature an adjustable surface mounting bracket to allow for multiple vertical and horizontal positioning. Loudspeakers are finished in gray epoxy.



GA-30T

Compact, High-Efficiency Loudspeakers

SC Series

Cost-effective series with versatile application provides directional sound projection and spot coverage in indoor and outdoor intercom and paging systems or functions as an extension loudspeaker to alarm systems and communication receivers. The Standard Model SC-15 is an 8Ω speaker and may be used with an external 25V / 70.7V transformer (order separately). Includes detachable swivel bracket. Weather-resistant construction. Finished in light beige epoxy. Also available SC-15-45 (45Ω) version



SC-15-45

Utility & Mobile Communications Loudspeakers

RCMR-15

Accessory loudspeaker enhances voice intelligibility-range for communications, radio-telephone, electronic hailer and alarm system installations in marine and vehicular applications. The Series meets the element and vibration resistance requirements of industrial, service and utility vehicles and is recommended for area paging, intercom and low-power siren applications. Voice coil impedance is 8Ω. The RCMR-15 has a round projector and includes the Omni-Purpose® mounting bracket for vertical and horizontal positioning plus a rigid 90° angle platform-mount.



RCMR-15

MO-2

Compact, 8Ω unit is designed for signal transmission in vehicular alarm, CB, marine radio, and transceiver installations where concealed mounting or minimum aerodynamic obstruction is desired.



MO-2

Voice Control™ Loudspeakers for Emergency Signaling

High-Power Re-Entrant Loudspeakers

AP-15TU / APF-15TU

15 watt surface and flange mounting loudspeakers for life safety and communication system applications are designed for use with compatible control equipment to provide high-intelligibility voice and signal transmission in emergency alarm, protective signaling, sound and intercom system installations.

AP-15TU(C) / AP-15TUCR

Surface mounting units with Omni-Purpose® mounting bracket for vertical and horizontal positioning. The Series also includes provisions for surface or strap mounting to pillars and I-beams.

APF-15TU(C)

Flange mounting units for recessed installation.

All models include 25V / 70.7V Vari-Tap® transformer. Units with (C) suffix include 5-mfd capacitor for line supervision. Weatherproof construction. Finished in gray baked epoxy or red (R) as noted. **Models comply with UL Standard 1480—Speakers for Fire Protective Signaling Systems and California State Fire Marshal (Title 19).** Models with special modifications to meet New York City MEA (Calendar no. 57-74-SA) and UL Canada are also available as standard product. Contact Atlas Sound.



AP-15TUC



AP-15TUCR



APF-15TU



PD-30T



PD-60A(T)
/ PD-5VT



YDA-TH

30, 40, & 60 Watt Drivers

PD Series. Competitively priced compression drivers provide accurate sound reproduction, optimum intelligibility and dependable performance in commercial sound, high-power music and public address loudspeaker systems. Models are equally suited for application with Atlas Sound projector horns or as replacement drivers for use with standard 1 3/8" - 18 male thread horns.

Universal Driver-To-Horn Adapter

YDA-TH. Dual adapter for combining two compression drivers to one sound projector. (Two 1 3/8"-18F thread to 1 3/8"-18M thread)



HLE-1

MLE-1



HLE/MLE-30



HLE/MLE-32

Explosion-Proof Loudspeakers

HLE and MLE Series. These UL and CSA (HLE Models only) listed loudspeakers are specified for high-efficiency transmission of voice and/or electronic signals within explosive or combustible atmospheres and environments. Drivers and projector horns may be configured to comply with specific environmental classification groups within Class 1 ratings. HLE Series drivers are 60 watts. MLE Series are 30 watts. Both are offered with an internally mounted line transformer (-T) or without. To meet UL Standards for loudspeakers in distributed applications, models with factory-mounted transformer (-T) must be specified. Projector horn Model HLE/MLE-30 is a reflex-type sound projector of molded plastic with wide-angle dispersion. Model HLE/MLE-32 is an all-metal circular reflex horn with directional sound distribution pattern. Drivers and projector horns are ordered and shipped separately. For performance accuracy, specifications are listed for assembled configurations. All models are equipped with 1/2" conduit access and adjustable mounting bracket.

Model HLE/MLE-30 with a mounted driver measures 14" Width x 6" Height x 17 1/2" Depth.

Model HLE/MLE-32 horn with a mounted driver is 16 1/2" Diameter x 21 1/2" Depth.

For Canadian Use: CSA listed product (HLE 2 Series) are available in both Class 2 (Explosion Proof and Dust Ignition Proof Electrical Equipment) and Class 3 (Explosion Proof). Please call for details.

Atlas Sound explosion proof speakers meet division 2 criteria.

Bi-Axial Horn with Gimbal Mount

BIA-100

A twin reflex air column for controlled directivity and an exponential bell for constant sound dispersion and linear frequency response emphasis. **Unit is designed for use with compression driver units in high-power voice, music, and signaling systems including service and mass transit centers, industry and commerce, educational, and institutional applications.**

Patented gimbal mount for surface or flange mounting provides labor-saving installation and horizontal/vertical positioning adjustment. Non-resonant foam construction is suitable for indoor and outdoor application. Finished in non-glare matte black.



CJ-46

Horn for Exponential Sound Dispersion

CJ-46

All-purpose unit is a low silhouette, directional horn for sound and signaling installations where wide-area dispersion and maximum sound and audibility are required. Recommended for use with compression driver units in indoor and outdoor applications including community warning systems, sports, and leisure facilities, industry, and commerce. Mounting bracket for vertical, horizontal, or stacked positioning is heavy-duty steel with positive lock. Weatherproof bell is all-fiberglass construction finished in black.

Horns for Uniform Directional Sound Projection

DR Series

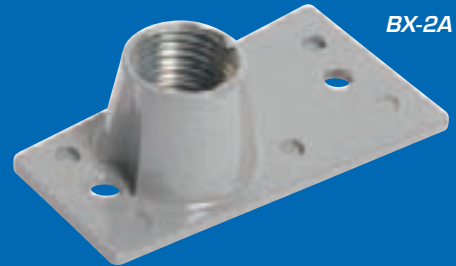
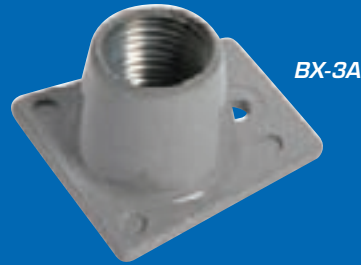
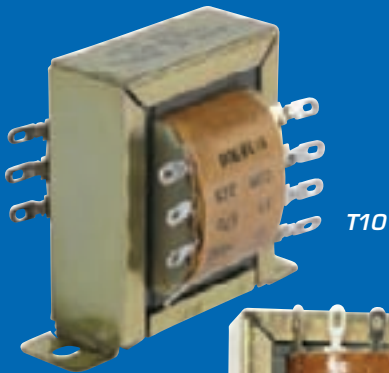
Circular horns offer clean and uniform reflex sound path for high-efficiency penetration of voice or music over distance and ambient noise. Designed for use with compression drivers in sound and signaling installations including industrial plants, retail service establishments, sports facilities, church towers, amusement parks, and mass transit terminals. Includes heavy duty "U" shaped mounting bracket. All-metal construction. Finished in gray baked epoxy.



DR-54



BIA-100



15, 30, & 60 Watt Transformers

Atlas Sound constant-voltage line-matching transformers are designed for use with compression driver type loudspeakers. All units provide low insertion loss and cost-efficient power handling. (Transformers for cone loudspeakers are listed in on page 35).

T10 15 Watt Transformer

Primary: 8K, 4K, 2K, 1K, 670, 325, 180, 90, & 45Ω.
 25 Volt power taps: .3, .6, .9, 1.9, 3.5, 7, & 14 watts.
 70.7 Volt power taps: .65, 1.25, 2.5, 5, 7.5, & 15 watts.
 Secondary: 4, 8, & 16Ω.

T20 30 Watt Transformer

Primary: 2500, 1300, 666, 333, 167, 89, & 45Ω.
 25 Volt power taps: 1.89, 3.7, 7, & 15 watts.
 70.7-Volt power taps: 1.8, 3.7, 7.5, 15, & 30 watts.
 Secondary: 8Ω.

T18 60 Watt Transformer

Primary: 2K, 1K, 500, 250, 125, 85, and 45Ω.
 25 Volt power taps: .3, .6, 1.25, 2.5, 5, 7, & 14 watts
 70.7 Volt power taps: 2.5, 5, 10, 20, 40, & 60 watts.
 Secondary: 4, 8, & 16Ω.

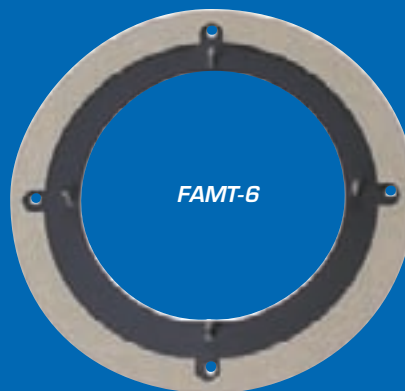
Cable / Conduit Adapters

Vandal-resistant cover plates for armored cable and conduit connection are designed for use with environment-resistant, double re-entrant loudspeakers. BX Series mounts standard male threaded pipe with 14 threads per inch. Construction is cast aluminum.

Mounting Accessories

APBK Replacement Omni-Purpose® swivel bracket, gray.

FAMT-6 Mounting ring/adapter allows a 6" cone or APF Series loudspeaker to mount an 8" enclosure and/or grille.



APF Series Baffles, Enclosures & Mounting Rings



L20-100

L20-100

- Round grille
- CRS construction with baked white epoxy finish.
- Mounts APF-15 or APF-15T.
- 11" (279mm) Diameter x $\frac{3}{8}$ " (10mm) Deep.



L20-101

L20-101

- Square grille.
- CRS construction with baked white epoxy finish.
- Mounts APF-15 or APF-15T.
- 10½" Square (267mm) x $\frac{3}{16}$ " (5mm) Deep.



L20-201

L20-201

- Recessed 20-gauge.
- CRS enclosure for L20-100 grille.
- Includes combination conduit knockouts for access.
- Undercoated to prevent resonance.
- 8 $\frac{9}{16}$ " (217mm) Diameter x 6" (152mm) Deep.



L20-213

L20-213

- Square surface enclosure for mounting L20-101 grille.
- Conduit knockouts and mounting holes located in top.
- White epoxy finish.
- 10½" Square (270mm) x 6" Deep (152mm).

L20-220

- Round mounting ring for L20-100 grille.
- 8 $\frac{9}{16}$ " (217mm) Diameter x $\frac{5}{8}$ " (16mm) Deep.



L20-220

L20-222

- Same as L20-220 with mounting ears for 24" (610mm) lay-in tile.



L20-222

193-8(6)

- Cost-efficient enclosure is provided in two depths
- Furnished with four compound conduit knockouts for standard screw-mount baffle installation.
- Undercoated and finished in black epoxy.



193-8-6

Round Economical Steel Baffles

51 Series

This industry favorite is an aesthetically pleasing and cost-efficient baffle available in standard screw-mount or labor-saving torsion-spring (T) versions. Models for 4" loudspeakers include welded mounting studs. One-piece CRS construction. Textured white epoxy finish.



51-8

Round Aluminum Baffles

60 Series

Popular series is available in standard screw-mount. One-piece construction. Available in choice of beautiful, satin aluminum finish or textured white (W) where noted.



60-8

Round Decorative Steel Baffles

61 Series

Attractive baffle includes concealed loudspeaker mounting studs for clean appearance and ease in loudspeaker attachment. Available in standard screw-mount and torsion-spring (T) versions where noted. Two-piece welded CRS construction. Available in textured white epoxy.



61-8

Round General Purpose Steel Baffles

62 Series

This versatile design is popular for a wide variety of applications. The 62-8 model utilizes standard screw-mount installation. The T62-8 model features torsion spring installation for a hardware-free appearance. Both have concealed loudspeaker mounting studs. One-piece CRS construction. Textured white epoxy finish.



62-8

Model	Mounts		
	Mounting Ring	Tile Bridge	Enclosure
51-4	—	81-4	(EZ)96-4 Series, (EZ)96-4X Series
51-8	75-8, 76-8(E2), P77-8, P78-8	81-R(S)	(EZ)95-8 Series, T95-8 Series, Q408, CS95-8, BMT95-8(7)
		EQ81	(EZ)96-8 Series
60-4	—	81-4	(EZ)96-4 Series, (EZ)96-4X Series
60-8(W)	75-8, 76-8(E2), P77-8, P78-8	81-R(S)	(EZ)95-8 Series, T95-8 Series, Q408, CS95-8, BMT95-8(7)
		EQ81	(EZ)96-8 Series
61-8W	75-8—, 76-8(E2), P77-8, P78-8	81-R(S)	(EZ)95-8 Series, T95-8 Series, Q408, CS95-8, BMT95-8(7)
		EQ81	(EZ)96-8 Series
61-12W	—	—	95-12, 95-12-12
62-8	75-8, 76-8(E2), P77-8, P78-8	81-R(S)	(EZ)95-8 Series, T95-8 Series, Q408, CS95-8, BMT95-8(7)
		EQ81	(EZ)96-8 Series

Baffles

Round Plastic Recessed Ceiling Baffles

P900

Acoustical louver design provides maximum sound transmission and dispersion. Features standard screw-mount installation with concealed loudspeaker mounting. Molded from high-impact polystyrene plastic. Color is ceiling white.



Round Contoured Aluminum Baffles

M222W Series

Popular baffle is available in standard screw-mount. One-piece aluminum construction. Finished in textured white (W) as noted.



Round Sculptured Concealed Mounting Baffles

T720 Series

High-quality grille with contoured trim ring and fine perforation pattern coordinates with lighting fixture trims to provide a clean and contemporary appearance for 4" & 8" loudspeakers. Models have provisions to accommodate ceiling thicknesses up to 2" deep. All models also feature a flush perforated center section, torsion springs, and concealed loudspeaker mounting studs. Welded CRS assemblies are finished in textured white.



Round Concealed Mounting Baffles With Regressed Steps

T730 Series

Superb design features interior regressed steps to simulate recessed lighting fixtures. Torsion spring installation and concealed loudspeaker mounting studs eliminate all visible hardware. Welded CRS construction prevents vibration. Two-tone finish is matte white on the outer trim and black on the interior. T730-4 Series is 11/16" (27 mm) deep.



Model	Mounts		
	Mounting Ring	Tile Bridge	Enclosure
P900	75-8, 76-8(E2), P77-8, P78-8	81-R(S)	(EZ)95-8 Series, T95-8 Series Q408, CS95-8, BMT95-8(7)
		EQ81	(EZ)96-8 Series
M222W	75-8, 76-8(E2), P77-8, P78-8	81-R(S)	(EZ)95-8 Series, T95-8 Series Q408, CS95-8, BMT95-8(7)
		EQ81	(EZ)96-8 Series
T720-4	PR411	FA81-4	E410(-11), E410NK, EZE410
T7204BT	PR411	—	(EZ)E410 Series
T720-8A	T75-8(E1)(E2)	81-8S	T95-8 Series, BMT95-8(-7), EZ95-8
T730-4(-B)(-W)	PR411	FA81-4	BMT95-4(7), (EZ)E410 Series

Baffles

Square Contemporary Wall / Ceiling Baffles

161 Series

Handsome design and concealed loudspeaker mounting studs present this baffle as an ideal choice for most office interiors. Available in standard screw-mount. Construction is one-piece CRS and includes no leak gasket. Finish is textured white epoxy.



161-8

Square Deluxe Steel Baffles

164 Series

Beveled-edge trim square features a large protective screen with separate loudspeaker mounting plate for extended "no leak" bass response. Available in standard screw-mount. Two-piece CRS construction. Textured white epoxy finish. Models 164-8A & 164-12A also available in black (-052).

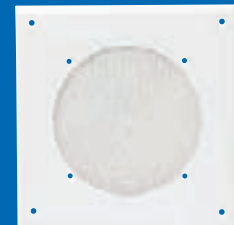


164-8A

Square Economical Wall or Ceiling Baffle

169-8

Cost-efficient, beveled-edge trim square features round protective screen, standard screw-mount installation and direct loudspeaker mounting. One-piece CRS construction. Finished in textured white epoxy.



169-8A

Square Perforated Baffle

170-8A

Popular design features a die-formed frame with shallow bevel and perforated screen. Separate loudspeaker mounting plate provides extended "no leak" bass response. Baffle is standard screw-mount installation with concealed loudspeaker mounting studs. Two-piece CRS construction. Finished in textured white epoxy.



170-8A

Model	Mounts		
	Mounting Ring	Tile Bridge	Enclosure
161-4	—	—	198-4, SE175-4
161-8	—	81-8S	198-8 Series, SE175-4
164-8A	—	81-8S	(SM)191-78 Series, Q418, QS408
164-12A	—	—	Q4412, Q4612, Q4712, Q4812
164-15A	—	—	Q4915
169-8A	—	—	193-8(-6)
170-8A	75-8, 76-8(E2), P77-8, P78-8	81-R(S)	(EZ)95-8 Series, T95-8 Series Q408, CS95-8, BMT95-8(7)
		EQ81	(EZ)96-8 Series

Baffles

Compact Aluminum Baffles for Wall or Ceiling Use

410 Series

Ideal for unidirectional applications where mounting space is limited. Baffle mounts easily to wall, ceiling or 4" (102mm) octagon E.O. box (by others). Manufactured of aluminum, undercoated and patch-jute lined. Finished in satin aluminum or textured white (W) where noted.



410-8

Wood Slope-Front Baffle / Enclosures

417-8WD

These wood slope-front baffles are ideal for installations that require the aesthetics of classic enclosure design, particularly classrooms, offices, reception areas, and retail outlets. Offered for use with 8" loudspeakers (sold Separately) and features a baffle / enclosure with walnut grain laminate, black fabric grille, and a 9.5° slope for directional sound dispersion.



417-8WD

Cylindrical Bi-Directional Baffle / Enclosures

510 Series

Attractive enclosure with two spun grilles is designed to mount a single 8" loudspeaker for wall or ceiling installations where bi-directional sound dispersion is desired. Aluminum construction is patch-jute lined and undercoated to prevent mechanical and acoustic resonance. Mounts to a 4" (102mm) octagon E.O. box (by others). Finished in satin brushed aluminum or textured white (W).



510-8

Model	Mounts		
	Mounting Ring	Tile Bridge	Enclosure
410-4 410-8(W)	—	—	(4" octagon E.O. box)
410-4 410-8(W)	—	—	(4" octagon E.O. box)
415-8(W) 417-8WD	—	—	(included)
510-4 510-8(W)	—	—	(4" octagon E.O. box)

Baffles



Recessed Circular Baffle

VP60-R. Ruggedly constructed baffle assembly provides tamperproof protection for 8" cone loudspeakers or APF Series re-entrant horns by means of adapter plate FAMT-6 (order separately). **Trim ring is cast from self-aging aluminum alloy with a tensile strength of 44,000 P.S.I.** Loudspeaker grille is stainless steel woven wire mesh reinforced by a perforated CRS loudspeaker adapter. Tamperproof screws are manufactured of a special heat-treated alloy and mount in countersunk holes for added security (special wrench included). Finished in satin aluminum with a clear lacquer coating.

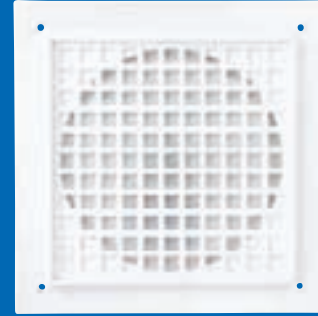


Re-Entrant Horn Adapter Plate

FAMT-6 Specially designed plate retrofits vandal-proof baffles to accept APF Series re-entrant horns. It is also a general-purpose mounting ring/adapter for retrofit applications which allows a 6" cone or horn loudspeaker to mount an 8" enclosure and/or baffle. (Model FAMT-6 replaces VPA-APF.)

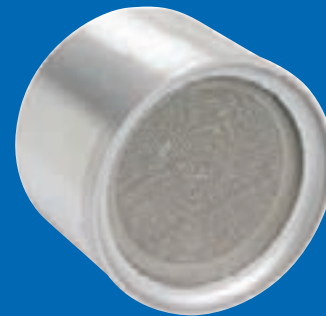


VP161



Recessed or Surface-Mount Square Baffles

VP161 Series. Versatile series features security for a variety of cone and re-entrant horn loudspeaker types and sizes. Manufactured from special self-aging aluminum alloy with a tensile strength of 44,000 P.S.I. loudspeaker grille is reinforced with a perforated CRS stud-mounting plate. Baffle installs with special heat-treated alloy screws which are countersunk to enhance security (special wrench provided). Finished in textured white epoxy. Baffles may be flush or surface-mounted using only noted enclosures.



Uni-Directional and Bi-Directional Baffle / Enclosures

VP410-S / VP510-B. Welded cylindrical baffles of sturdy construction provide security against vandalism for 8" cone loudspeakers. Model VP410-S is a surface mount uni-directional baffle/enclosure that can be used with 8" cone loudspeakers and APF Series re-entrant horns by means of adapter plate FAMT-6 (order separately). Model VP510-B is identical to the VP410-S, except that it includes an attractive canopy mount designed for bi-directional sound dispersion. Housings are spun .090 tempered aluminum plate. Loudspeaker grille is cast from special self-aging aluminum alloy with a tensile strength of 44,000 P.S.I. Grille is reinforced with a stainless steel wire mesh screen spun over a CRS subplate. Housing and grille are assembled using flush-mount heat-treated alloy screws. Models mount to standard E.O. boxes (not included), however, the VP410-S installs via keyhole slots on the rear of the housing or may be flush mounted with anchors to ceiling or wall. The VP510-B installs using a heavy cast aluminum canopy for ceiling or wall installations. Baffle and housing are finished in satin aluminum with a clear lacquer coating. Canopy (of VP510-B) is finished in black epoxy.



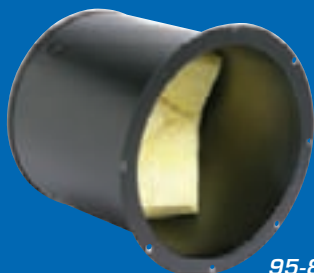
EZ95-8



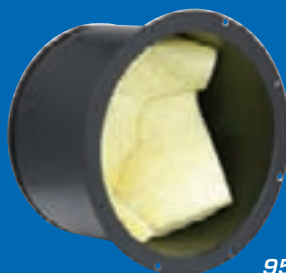
BMT95-8



BMT95-4-7



95-8-10



95-8-7



191-78-8



96-8



SM191-78-8



198-8-8

EZ Mount Enclosure System for Suspended Ceilings

Time and labor-saving enclosure system for 4" and 8" loudspeakers installs quickly and efficiently. Enclosures have premounted brackets and install easily with screws to support rails provided. No costly tile bridge is necessary. Welded CRS enclosures are undercoated and finished in textured black epoxy. Support rails are CRS and finished in a galvanized coating.

Enclosure System for Difficult Access Ceilings

Blind-Mount Enclosures for 4" & 8" Loudspeakers

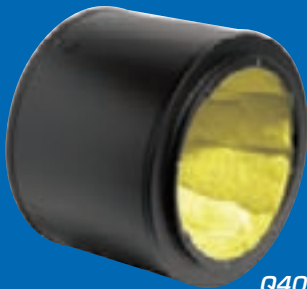
BMT Series Unique enclosure system provides easy and cost-effective loudspeaker installation in hard-to-access ceilings, including drywall. Models are equipped with unique mounting ears that telescope out from the enclosure interior and adjust vertically to accommodate ceilings with a thickness of ½" (13mm) to 1⅝" (35mm). Construction is CRS with torsion spring receptacles and three ½" (13mm) conduit knockouts in the enclosure top. J-Nuts are included on the return of the enclosure to accommodate surface-mounting grilles. Standard depth Models BMT95-8 and BMT95-4 include sound dampening material to minimize metallic resonance. Extra depth Models BMT95-8-7 and BMT95-4-7 feature high-density, acoustic batting.

Enclosure for Extended Loudspeaker Performance

Extra-Depth Backboxes for 8" Loudspeakers

Achieve improved low-frequency performance of 8" commercial and professional loudspeakers with Atlas Sound extra-depth enclosures. Increased volume extends bass response by allowing additional acoustic loading for cost-effective application wherever enhanced audio quality is desired. Enclosures are undercoated and lined with 1½" (38mm) thick high density fiberglass (1½ lbs per ft³) to prevent metallic resonance in the high end of the frequency spectrum. Models include industry-standard 95 Series in screw-mount and torsion spring (T) versions, popular 96 Series with internal mounting holes on the flange for installation convenience in acoustic tile ceilings and Model 191-78-8 with adjustable mounting bracket for installation flexibility in a variety of ceiling types and depths. All enclosures are heavy-gauge CRS furnished with combination conduit knockouts. Recessed models are finished in textured black epoxy. Surface model is finished in textured white epoxy.

Q Series Enclosures



Q408



QS408



Q4915



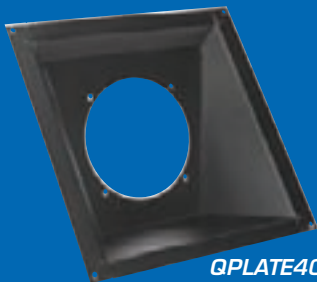
Q4712



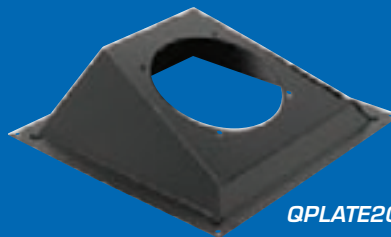
Q4612
(with QPLATE40)



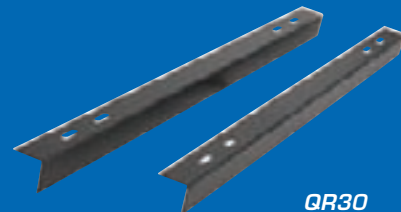
Q428-SA



QPLATE40



QPLATE20



QR30

Enclosures

Q Series assembly matches the acoustical characteristics of $\frac{3}{4}$ " (19mm) plywood, while providing the structural, economic, and code regulation benefits afforded by metal enclosures. Construction is 18-gauge CRS with formed strengthening ribs on the enclosure back. Acoustic fiberboard is permanently affixed to the inner wall surfaces of all square enclosures to eliminate hangover and vibration (cylindrical enclosures utilize undercoating). Inner walls are also lined with $1\frac{1}{2}$ " (38mm) thick fiberglass having a $1\frac{1}{2}$ lb. / ft³ density to control unwanted resonances in the high end of the frequency spectrum. Compound $\frac{1}{2}$ "- $\frac{3}{4}$ " (13mm – 19mm) conduit knockouts are furnished on all four sides to facilitate wiring. Enclosures are finished in black textured epoxy (Q428-SA is white epoxy).

Note: Recessed enclosures with a cubic content greater than 1ft³ may require optional QR Series mounting angles.

Surface Mount Enclosure with Premounted CRS Baffle

Q428-SA. Convenient assembly is 1 $\frac{1}{2}$ ft³ with $\frac{1}{2}$ " thick fiber board. Package includes above specifications and premounted baffle (included) is recessed into the enclosure for flush appearance. Back plate is removable for installation ease. Finish is textured white epoxy.

Mounting Angles

QR30. Optional angles are recommended for Q Series enclosures with a cubic content greater than 1ft³ 16-gauge CRS construction. Angles are 30" Length (762mm) and finished in black baked epoxy (1 pair).

Q Plates

Atlas Sound Q Plates allow 8" speakers to be mounted in enclosure models Q4612, Q4712 and Q4812 with 20° or 40° offset angle to compensate for angled ceilings.

QPLATE20 20° offset plate mounts 8" speakers
 QPLATE40 40° offset plate mounts 8" speakers
 12T08PLATE adapts 12" enclosure to mount 8" speakers



Extra-Depth Enclosure for 4" Loudspeakers

96-4X Series. Providing improved low-end performance for 4" loudspeakers. The 96-4X has a volume of $\frac{1}{4}\text{ft}^3$ (.007m³). Similar to Series 96-4 with increased width and depth. Constructed of CRS, undercoated, and finished in textured black epoxy.

Economical Enclosure for 8" & 12" Loudspeakers

95 Series. Versatile, industry-standard enclosures are available in many configurations to meet installation and application requirements. Original Models 95-8 and 95-12 are furnished with four compound conduit knockouts each, flexible perforated straps and 8-32 J-Clips. Models with (T) prefix are also equipped with torsion-spring receptacles. Assemblies are CRS with textured black epoxy finish and patch-jute lining.

Stackable Enclosures

CS95 Series. Ideal for contractors with limited storage facilities, this conically shaped enclosure nests to achieve reduced inventory space requirements and transportation costs. Furnished with four combination conduit knockouts $\frac{1}{2}$ "– $\frac{3}{4}$ " (13mm – 19mm), flexible perforated strap, and four J-clips. One-piece CRS construction, undercoated, patch-jute lined and finished in textured epoxy.

Enclosure with Internal Mounting Holes

96 Series. This popular enclosure is designed with mounting holes located on the internal flange of the enclosure to provide installation ease and convenience in acoustic tile ceiling applications. Furnished with four compound conduit knockouts and extended $\frac{3}{8}$ " plaster flange. Constructed of CRS, undercoated and finished in textured black epoxy.

Torsion Spring Enclosures for 4" Loudspeakers

E410 Series. Enclosures mount 4" loudspeakers and accept a variety of torsion-spring grilles. The E410 is $\frac{1}{4}\text{ft}^3$ (.007m³) enclosure, E410-11 is an extra-depth [$\frac{1}{2}\text{ft}^3$ (.014m³)] version of the E410. All versions are constructed of CRS, undercoated, equipped with torsion spring receptacles, and finished in textured black epoxy. Use model FA81-4 tile bridge or 180 Series rails for suspended ceiling applications.

Economical Compact Enclosure For 4" Loudspeakers

96-4 Series. Cost-effective enclosure for 4" (102mm) loudspeakers are designed to screw-mount to baffles 51-4 and 60-4. Model 96-4 is equipped with compound conduit knockouts.



198-8



198-4



SS198-4



SE161-R



161RES



161-SES



SE198-4



SM191-78-8



191-78-8

Economical Enclosure

Contemporary Enclosure

193 Series. Cost-efficient enclosure is provided in two depths and furnished with four compound conduit knockouts for standard screw-mount baffle installation. Construction is CRS, undercoated and finished in black epoxy.

SE175-4. Attractive and highly versatile surface mount enclosure will accommodate standard screw-mount and torsion spring baffles. CRS construction, undercoated and finished in textured white.

Enclosure for 4" and 8" Loudspeakers

Deluxe Enclosure

198 Series. 198-4 is designed for 4" (102mm) loudspeakers and will accommodate standard screw-mount baffles. 198-8 is designed for 8" (203mm) loudspeakers and is available in two depths and choice of standard screw-mount or torsion-spring (T) baffle mounting configurations. All models are CRS construction with four compound conduit knockouts. For extra depth Model 198-8-8 with acoustic fiberglass, refer to page 61.

SM191-78. Architecturally pleasing surface mount enclosure presents a clean, crisp appearance. CRS construction, undercoated and finished in textured white. For extra depth, see Model SM191-78-8 with acoustic fiberglass on page 61.

Surface Mount Enclosure for 4" Loudspeakers

Enclosure with Adjustable Mounting Bracket

SE198-4. Contemporary design is suitable for a wide range of commercial and industrial applications. CRS construction, undercoated, and finished in textured white.

191 Series. Versatile enclosure is ideal as a standard stock item. Features an adjustable mounting bracket ($\frac{1}{16}$ " – $\frac{3}{4}$ ") to provide installation flexibility in a variety of ceiling types and depths. Series is available in choice of two depths and for standard screw-mount baffle installation. CRS enclosure is furnished with four compound conduit knockouts, heavy undercoating, patch-jute lining and black epoxy finish. For extra-depth see Model 191-78-8 with acoustic fiberglass on page 61.

Enclosures for Vandal-Proof Baffles

161 Series. Durable enclosures are designed to surface mount all VP161 Series vandal proof baffles. Stainless Steel construction with undercoating. 161SES Surface mount model finished in textured white. 161RES recessed model.

Baffle / Enclosure Mounting Accessories

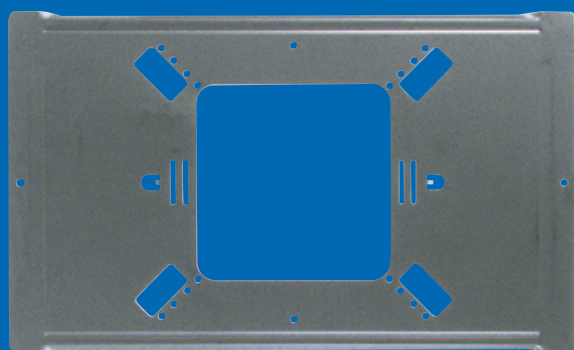
Tile Bridges for 4" & 8" Loudspeakers

81-8S / 81-8R / 81-4 / EQ81. Load-bearing bridges prevent ceiling tile sag in ceiling installations by distributing loudspeaker, enclosure and/or baffle assembly weight to overhead T-bar support members. Model 81-8S mounts 8" loudspeaker packages and enclosures and features a square cut-out with a multi-position hole pattern to accommodate a variety of round and square baffles including torsion spring and screw-mount models. Model 81-8R has a round cut-out and mounts 8" loudspeaker packages and enclosures; the 81-4 has a round cut-out and mounts 4" loudspeaker packages. All tile bridges are constructed of 24-gauge rust-resistant electrogalvanized steel, except model EQ81 which is 20-gauge.

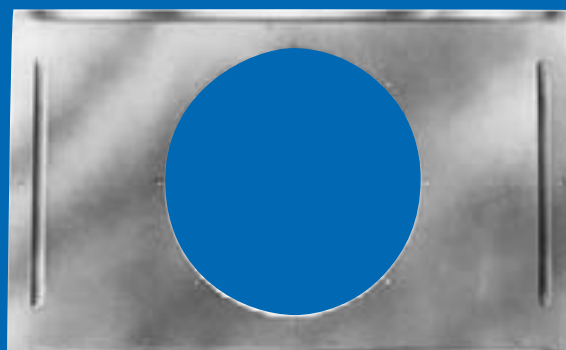
Channel Supports

180 Series. For application in suspended ceiling installations where adequate support is not available to mount loudspeaker, enclosure, and baffle. Furnished with provisions to mount any type of protective enclosure or plaster frame. CRS construction. Galvanized finish.

186 Series. Support rails provide quick and efficient installation of protective enclosures and mounting rings in 16" (406mm) and 24" (610mm) stud ceiling construction. Adjustable slot and sliding basket nut allow a wide range of positioning flexibility to meet your application requirements. 186 Series is ideal for use with 95 Series and 96 Series enclosures and 75 Series and 76 Series mounting rings for 8" loudspeakers. Note: series will not accept enclosures and mounting rings for 4" loudspeakers. CRS construction. Galvanized finish



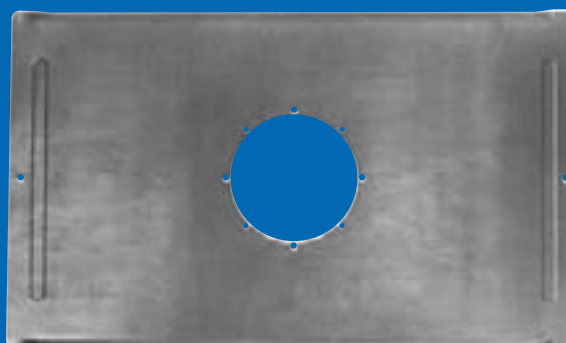
81-8S



81-8R



EQ81



81-4



186-24



186-16



180-4



180-2

Mounting Rings

75 Series

Versatile series is ideal for installation of screw-mount and torsion-spring (T) baffles with 8" (203mm) and 12" (305mm) loudspeakers. **Recommended for a variety of ceiling constructions including dry wall, plaster, and conventional ceiling applications when protective enclosures are not required.** CRS construction. Finished in black epoxy. Four staking rivets or two torsion tabs included. (E1 suffix designates models with mounting ears for 16" (406mm) stud ceilings; E2 for 24" stud ceilings.) Note: T75-8 will not accept Model T730-8 grille.

76-8

For installation of screw mount baffles with 8" (203mm) loudspeakers in drywall, plaster, and conventional ceiling construction. CRS construction. Finished in epoxy. Four 8-32 J-nuts included.

P Series

Plastic mounting rings are ideal for retrofit applications with hard-to-access ceilings. Model P77-8 may be conveniently installed from ground level by cutting a 12" (305mm) diameter hole in the ceiling, snapping ring at breakslot, and maneuvering it up through hole to rest above ceiling. Model P78-8 includes mounting ears for conventional installation in 16" (406mm) stud ceilings. Construction is polystyrene plastic. Four J-nuts included.

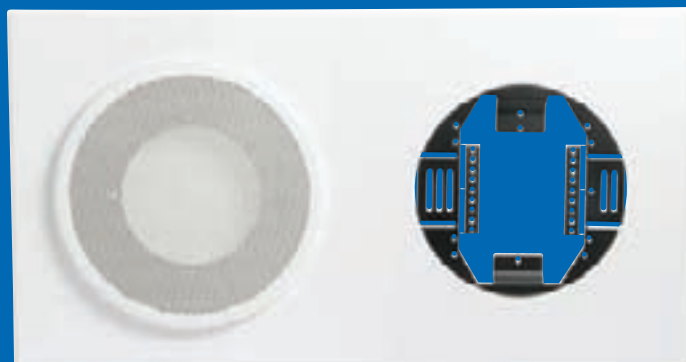
PR411 / TR411

Versatile mounting ring installs to a variety of torsion-spring grilles with 4" (102mm) loudspeakers in drywall, plaster and conventional ceiling construction. Recommended for ease and economy when a protective enclosure is not specified. CRS construction. Finished in black epoxy. Includes torsion tabs. TR411 includes ears for mounting to 16" or 24" O.C. studs.





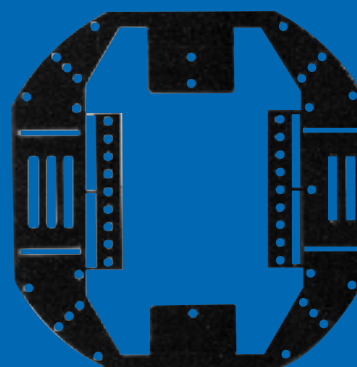
840-89A



830-812A



SM194-812



Universal Mounting Bracket

Analog Clock / Speaker Baffles

Atlas Sound clock / speaker baffles feature a patented (US Patent #5,735,493) universal clock mounting bracket which enables secure mounting of any 9", 10", or 12" standard clock (by others). Universal clock mounting bracket is secured via #4 weld studs. To ensure proper fit, the overall diameter of the selected clock must clear the clock / hole clearance diameter listed in the chart below. All clocks mount from the front. The bracket can also be easily modified (trimmed) in the field to clear clock dust covers or motors. Compatible clock manufacturers include: American Time & Signal, Cincinnati, DuKane, Edwards, Faraday, Franklin, Latham, National, Rauland, Standard, and Simplex.

830 Series. Economical recessed or surface-mounting assembly features a CRS grille and trim ring mounted on an 18-gauge CRS panel. Unit also includes a black gasket for concealed loudspeaker mounting. Assembly installs with double-action torsion spring system to eliminate visible hardware. Assembly is finished in textured white.

840 Series. Baffle for recessed or surface-mounting features a CRS perforated grille, CRS frame and black subplate for concealed loudspeaker mounting. Grille and frame are finished in textured white epoxy.

Enclosures for Clock / Speaker Baffles

Enclosures are heavy-gauge CRS, undercoated and finished in black epoxy. Ample conduit knock-outs are furnished on all sides for easy wiring. 194 Series and 195 Series include a compartment divider panel to separate high and low-voltage wires. Surface models are finished in textured white epoxy.

UL 263 Fire-Resistant Speaker Assemblies

FR Series

Atlas Sound has developed the only speaker assemblies that are UL classified for fire-resistance in the United States and Canada. The FR Series has passed a fire-rating up to three hours (rating varies by ceiling construction) and has been tested in accordance with the UL standard – Fire Test of Building Construction and Materials, ANSI/UL263 (ASTM E119, NFPA 251).

FR Series assemblies include an enclosure-fiber kit, UL Listed speaker / transformer assembly, and UL Listed baffle. Each enclosure-fiber kit includes pre-cut fiber panels, metal enclosure, rail set and hardware. The speaker / transformer combinations approved for use in FR assemblies are FR versions of the industry standard Atlas Sound Strategy Series® FA136, FA138 models and the C803A, C10A, and FC104 loudspeakers. The approved baffles are also FR versions of familiar Atlas Sound models.

FAQ – Atlas Sound FR Series Loudspeaker Packages

- Q. Why do I need Atlas Sound Fire Rated Ceiling Speaker Assemblies?
- A. You will need the Atlas Sound Fire Rated Speaker Assemblies if the ceiling being constructed has to conform to UL Standard 263 "Fire Tests of Building Construction Materials". These will work in 32 different 1 hour, 2 hour, and 3 hour fire resistant ceiling designs as listed in the 1999 UL Fire Resistance Directory.
- Q. How can I find out if the Atlas Sound FR Series will be approved in my application?
- A. Check with the local Fire Marshall or Building Inspector, who will have the final say in the approval of the FR Series Loudspeakers.
- Q. Will the Atlas Sound Fire Rated Speakers work in a sheet rock ceiling?
- A. No, the UL Standard 263 is for drop in or lay in tile applications only.
- Q. Can I just use the FR Series baffles, enclosures or speakers by themselves?
- A. No, the UL Standard 263 is only for the entire package only.



FR Series Pre-Assembly



FR Series Cut-Away

Atlas Sound FR Series Benefits Are Clear! UL Classification!

The UL mark is universally recognized and respected. Local regulatory agencies can feel confident in approving the UL Classified FR Series... the only UL Classified Fire Resistant Speaker Assemblies in the US and Canada!

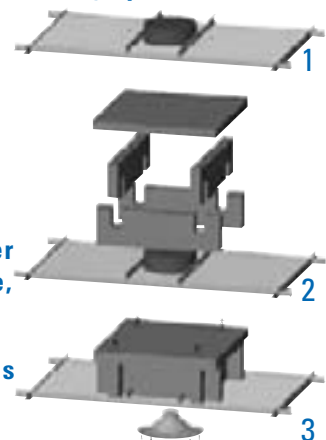
Quick Installation & Low Installed Cost!
The installed cost of an FR Series loudspeaker system will be substantially lower than the installed cost of a conventional loudspeaker system using contractor-constructed drywall fire boxes.

Wide Selection & Proven Performance!

FR Series loudspeaker components are UL Classified versions of proven Atlas Sound models. Installing an FR Series system means no compromise in Atlas Sound's high performance and quality standards.

Atlas Sound Makes Installations Easy!

- 1 Attach rails to enclosure
- 2 Assemble pre-cut fiber panels over enclosure, notch fiber at rails
- 3 Wire top panel to sides at four corners



Industry Standard Auto Transformer Attenuators

AT Series

UL listed high-quality auto transformer series provides the advantages of excellent frequency response, low insertion loss and reliable performance for volume control application in 25V and 70.7V systems. Attenuation is accomplished in ten steps plus positive off position. (No stop between maximum and off position to prevent switch damage). Contacts are silver plated for noise-free operation. Includes stainless steel plate, stamped and filled dial scale with skirted black knob.

AT Decora Series

The same as the AT Series with both White and Ivory Decora Style plastic plates with matching skirted knobs.

Auto Transformer with Precision Level Control

E408-100

Specially designed for attenuation in masking and sound reinforcement systems where fine tuning of level control is required. The E408-100 employs a ten-position, non-shorting rotary switch without stop. **Attenuation rate is 1.5dB per step.** (All other specifications are the same as the AT Series including the UL listing).

Priority Paging Option

PA Series

Priority paging feature bypasses the effect of the attenuator to provide program level selection of individual emergency and paging signals at the amplifier. This option is available on all AT Series attenuators. The SPDT relay is operated with 24VDC at 10mA. Includes protective relay cover to ensure lasting trouble-free performance. All other specifications except for dimensions are the same as AT Models.

Rack Mount Option

RM Series

For attenuation convenience of rack-mounted equipment in cabinets and consoles, the AT Series and E408 Series attenuators are available without mounting plate for rack panel installation. Attractive matte black polycarbonate dial scale overlay with adhesive backing replaces the mounting plate, skirted black knob included. Overlay size is 2" square (51mm). To order, simply add RM after the selected attenuator model number. Example: AT10-RM or AT10-PARM. Dial scale overlays to retrofit existing installations are available, see Model HX23 on page 72. For easy rack mounting of RM Series attenuators, see model ATPLATE-052.



AT10
(In a Standard
Back Box)



AT100-PA



AT35-PA



AT10D



AT10-PARM



ATPLATE-052



DWS-8
(Ivory)



DWS-8
(White)



DAT-8



DAT8ST

Atlas Sound WhisperTouch® Volume Controls

Switched WhisperTouch volume controls provide clear, distortion-free music reproduction for commercial distributed systems or “Whole House” audio designs.

These volume controls feature impedance-matching (8Ω versions only) to protect the amplifier and balance the audio signal, fine-tune level control to adjust low listening levels to the perfect setting, and an easy-grip, low profile knob. The knob features smooth detents and make-before-break contacts for smooth transition when changing volume settings. Attenuation is accomplished in 10 steps. All models have frequency response of 20Hz – 20kHz (-3dB, +0).

Units include an on / off switch and indicator light. An internal “smart” relay switch automatically puts speakers into “stand by” mode making them “available” rather than indiscriminately active when the audio system is powered on. Simply touching the switch accesses audio. A modest sized indicator light provides quick visual status – (green=standby, red=active) Models require a separate 18-gauge, 2 conductor stranded cable to power the internal relay in addition to the loudspeaker cable. An external power supply, PS-M12, is recommended for 1–3 WhisperTouch units, or PS24-20 (See Page 142) for up to 18 units.

For installation, either a backless E.O. box or sealed box with 18 or 20 in3 volume (Carlon® B120A or equivalent) is required. Standard or Decora plate styles and available colors vary by model – see page xx for details. Decora trim plates not included.

Power Supplies for Switched WhisperTouch

PS-M12 Unit is a compact UL-listed 12VDC, 300 mA power supply with a 6’ cord. The required input voltage is 120V. Supply includes a 1/8” mini-plug for use with up to three Switched WhisperTouch™ volume controls.

Commercial Stereo Attenuators

DAT Series Atlas Sound offers traditional autoformer controls to provide excellent stereo performance and maximum speaker-handling capability. **Models include positive off and full-power pass through at the maximum setting.** Contacts are make-before-break for smooth transition. Models with 8Ω impedance are suitable for residential stereo and voice-coil circuit application. Models for 25V or 70.7V use provide level control in distributed constant-voltage systems. Single-gang models mount standard E.O. boxes 2½” deep. Includes both white and ivory knobs, inserts and trim plates.

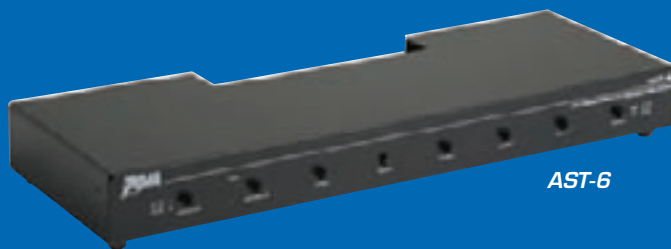
- Choose DAT8ST to Control Speaker Volume when Impedance Matching is Not Necessary Such as Single-pair Installations or when Multi-channel Amplifiers are Used for Individual Zones. Combine DAT8ST with a Separate Impedance-Matching Switching Device (AST Series) to Design a System with Multiple Loudspeaker Pairs.
- Choose DAT35ST70 for Control of Distributed Stereo Zones in 25V / 70.7V Systems.



PS-M12



ASL-6A



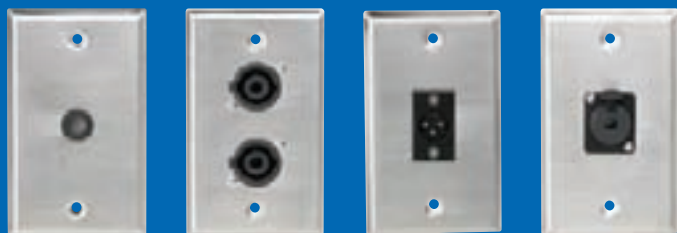
AST-6

Impedance-Matching Speaker Switching Systems

For use with 8Ω Applications Only, NOT FOR USE WITH 70.7V SYSTEMS.

ASL-6A

Impedance-matching loudspeaker switching system provides control of up to six loudspeaker pairs positioned in multiple room applications. All volume controls for each loudspeaker pair are located on the front panel for easy access. Attenuation is accomplished in 10 steps. **Units accommodate any combination of 8Ω and/or 16Ω loudspeakers.** Choose ASL-6A to control speakers in retrofit or pre-wire installations where speaker wiring goes directly to the main equipment cabinet; not to individual volume controls. ASL model offers individual speaker volume controls with individual A/B source selection and separate On / Off controls for each loudspeaker pair. Unit features a mar-resistant black finish. Dimensions are 17" Width x 1½" Height x 5¾" Depth and can be shelf or 19" rack-mounted (brackets included). Wire capacity is 14-gauge – 24-gauge.



SG-38GH

SG-NL4MP-2

SG-XLR-M1

SG-QTRSL-F1

Wall Plates with Connectors

Single Gang Stainless Steel Wall Plates

Professional appearance with easy and cost-efficient installation, Atlas Sound wall plates are offered in nine models with a variety of industry standard connectors. Models include mounting holes on standard box mount center [3¾" (83mm)] and plate mounting hardware.

Model	Description
SG-XLR-F1	(1) Female 3 pin XLR
SG-XLR-F2	(2) Female 3 pin XLR
SG-XLR-M1	(1) Male 3 pin XLR
SG-XLR-M2	(2) Male 3 pin XLR
SG-NL4MP-1	(1) NL4MP 4-Pole connector
SG-NL4MP-2	(2) NL4MP 4-Pole connector
SG-QTRSL-F1	(1) Female Locking TRS connector
SG-QTRSL-F2	(2) Female Locking TRS connector
SG-38GH	3/8" Hole & Grommet

AST-6

Impedance-matching loudspeaker switching system provides control of up to six loudspeaker pairs positioned in multiple room applications. Controls for each loudspeaker pair are located on the front panel for easy access. Unit accommodates any combination of 8Ω and/or 16Ω loudspeakers. Use AST Series to offer additional functionality to systems using traditional (non-WhisperTouch®) volume controls such as the DAT8ST. AST devices include separate on / off controls for each loudspeaker pair and one A-B source selector switch for overall system control. Units feature a mar-resistant black finish. Dimensions are 17" Width x 1½" Height x 5¾" Depth and can be shelf or 19" rack-mounted (brackets included). Wire capacity is 14-gauge – 24-gauge.



FBR4XLRF



FB4CPB

Microphone Floor Box

FB4XLRF floor box assembly provides a simple solution for recessed mic inputs. The unit is designed for easy installation into wood stages and platforms. Four female XLR connectors are recessed and slant loaded into the enclosure. A hinged steel cover plate provides protection for cable connectors. Connectors are standard "D Sub" type and may be easily removed to allow substitution of other "D Sub" devices. Connector pocket requires 5" square floor cutout. Trim plate dimensions are 8" square. For new or retrofit concrete floor installation use optional enclosure model FB4CPB.

Hardware Accessories

Model	Description
HXLP-3-11	Cable connector, Female 3 Conductor; A3F or Equal
HXLP-3-12	Cable connector, Female 3 Conductor; A3M or Equal
HX11-P	SPDT Momentary Push Button Switch, ¼ Amp Contacts, Black Button, Hardware
HX12-R	2 Pole, 6 Position Rotary Switch Continuous Rotation; 60° Indexing; ¾" Bushing Length; ¾" Shaft Length, Includes Hardware
HX21-B	Skittered Knob; Black; 1¼" Diameter Fits ¼" Shaft; One Set Screw
HX22-W	Skittered Knob; White; 1¼" Diameter Fits ¼" Shaft; One Set Screw
HX23	2" x 2" Poly carbonate Dial Scale. ¾" Center Hole. Black Finish
HX25-2	Double Gang S/S Plate; Dial Scale Stamped and Paint Filled ¾" Center Mount Hole, Mounts to Standard E.O. Box; With Hardware
HX26-2	Double Gang S/S Plate with Dial Scale for Attenuator and 6 Position Rotary Switch
HX31-345	3" Speaker with 45Ω Voice Coil. Magnet Weight 1.47 oz
HX41-50	50Ω Wirewound Potentiometer, 3 watt. Continuous Rotation. 3/8" Bushing Length; ¾" Long Flatted Shaft. Includes Mounting Hardware
ATPLATE-052	The new Atlas Sound AT Plate is perfect for rack mount applications where attenuators are required. The Atlas Sound AT Plate, a 2RU 14-gauge plate pre-punched to accommodate up to six Atlas Sound rack mount attenuators. Attractive black filler plugs are provided for applications where the AT Plate will not be fully "loaded". The plate is finished in flat black epoxy to better blend in with other rack mount equipment.



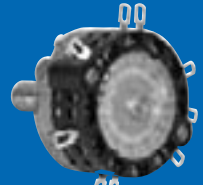
HX31-345



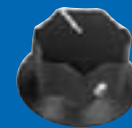
HX41-50



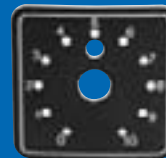
HX11-P



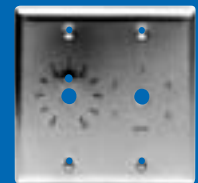
HX12-R



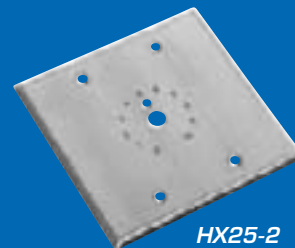
HX21-B



HX23



HX26-2



HX25-2



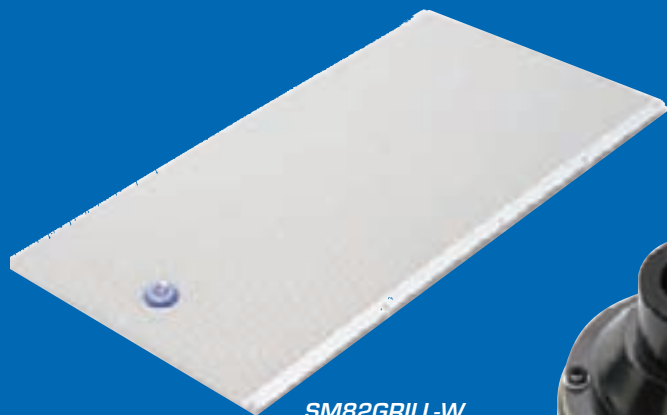
HXLP-3-12



ATPLATE-052

Hardware Accessories

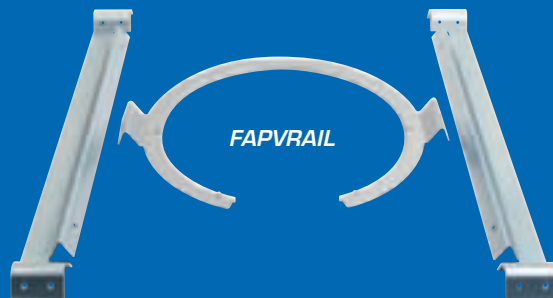
Replacement Speaker Parts



SM82GRILL-W



SM82HFDRV



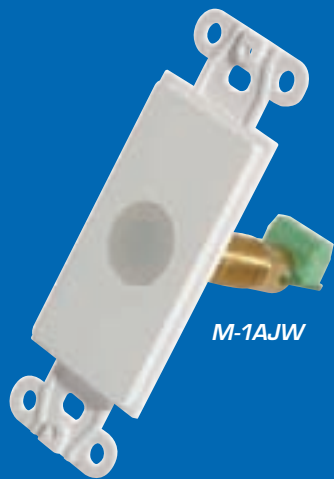
FAPVRAIL



SM52KNOB-B

<i>Model</i>	<i>Description</i>	<i>Model</i>	<i>Description</i>
SM52CBRKT-B	SM52 C-Bracket - Black	SM82WOOFER	SM82 8" Woofer Treated Cone
SM52CBRKT-W	SM52 C-Bracket - White	SMTERMCVR-B	SM Series Terminal Cover - Black
SM52GRILL-B	SM52 Grille w/ Logo - Black	SMTERMCVR-W	SM Series Terminal Cover - White
SM52GRILL-W	SM52 Grille w/ Logo - White	SM52TWEETER	SM42 Tweeter Driver Assembly
SM52KNOB-B	SM52 Knobs - Black - Each	FAP40TDRV	SM42 4" Woofer
SM52KNOB-W	SM52 Knobs - White - Each	SM42CBRKT-B	SM42 C-Bracket - Black
SM52TWEETER	SM52 Tweeter Driver Assembly	SM42CBRKT-W	SM42 C-Bracket - White
SM52WOOFER	SM52 5 1/4" Woofer Poly Cone	FAPVRAIL	V Rail for All FAP Series Models
SM42GRILL-B	SM42 Grille w/ Logo - Black	FAPPHX	Phoenix Connector for All FAP Series Models
SM42GRILL-W	SM42 Grille w/ Logo - White	FAP40TGRILL	FAP40T Grille
SM42KNOB-B	SM42 Knobs - Black - Each	FAP40TDL	FAP40T Dogleg
SM42KNOB-W	SM42 Knobs - White - Each	FAP40TDLS	FAP40T Dogleg Screw
SM82CBRKT-B	SM82 C-Bracket - Black	FAP40TDRV	FAP40T Driver
SM82CBRKT-W	SM82 C-Bracket - White	FAP40TTB	FAP40T Tile Bridge
SM82GRILL-B	SM82 Grille w/ Logo - Black	FAP42TGRILL	FAP42TC / FAP42T Grille
SM82GRILL-W	SM82 Grille w/ Logo - White	FAP42/62TDL	FAP42TC / FAP42T / FAP62T Dogleg
SM82HFDRV	SM82 HF Replacement Driver	FAP42/62TDLS	FAP42TC / FAP42T / FAP62T Dogleg Screw
SM82KNOB-B	SM82 Knobs - Black - Each	369551	FAP42TC / FAP42T Driver
SM82KNOB-W	SM82 Knobs - White - Each		

Replacement Speaker Parts



M-1AJW



F-1



M-1AJW



M-1A



M-1A

Micro Infrared Repeaters & Flashers

M-1A Series. Atlas Sound IR repeaters allow the operation of virtually any IR-controlled A/V component from multiple room locations. The M-1A repeater will receive the IR signal and rebroadcast it to the small F-1 flasher LED positioned on the front of each A/V component. The F-1 forwards the signal to the source component's IR receiver.

These micro repeaters feature an attractive, flush, white lens that blends with any white surface. **Their high sensitivity enables use within a 40 foot range with fast reaction time and minimal interference.** Repeaters are available installed on a white decorator-style subplate (cover plate not included) or separately for flush-mounting in a ceiling, wall, cabinet or speaker grille.

F-1 Series. Small F-1 flasher LEDs are shipped with an adhesive backing and 1/8" phone plugs for connection to all IR-controlled A/V components. Up to six flasher units may be connected to a single M-1A repeater using two M-1CB4B connector blocks or any standard adapter (by others).

Stand-Alone IR Repeater System

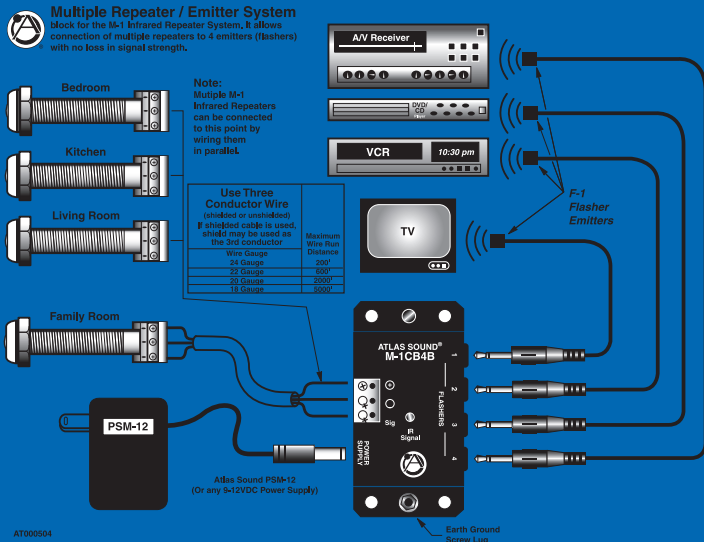
M-1CB4B. For installation flexibility, the M-1CB4B amplified connector block is offered as a plug-in interface device that provides connections for an M-1A Series repeater, four F-1 flashers, and power supply Model PS-M12. This configuration allows IR operation of up to four A/V components from up to four room locations. The M-1CB4B offers 1/8" mini jacks for power supply Model PS-M12 and up to four F-1 flashers; it also provides terminals for wiring up to four M-1A repeaters (rooms) in parallel fashion and a data jack for connecting a mini-pin IR source or another M-1CB4B. The unit's amplified circuit design supplies clear, strong IR data to source components.

This stand-alone IR repeater system requires: one M-1A repeater in each remote room location, one M-1CB4B for every four A/V components, a PS-M12 power supply, and one F-1 flasher for each A/V component. For installations which require control of more than four components or transmission from more than four rooms, multiple M-1CB4B blocks may be used.

Note: each M-1A repeater can control a maximum of six F-1 flashers.

PS-M12. A compact UL-listed 12VDC, 200 mA power supply with a 6' cord. The required input voltage is 120V. Supply includes a 1/8" mini-plug for direct connection to the M-1CB4B connector block (powers up to four F-1 flashers).

Note: some high-end A/V components are equipped to accept hard-wired IR signals. In this case, F-1 flashers would not be necessary.



AA-PPRC

Features

- Two In by Two Out Priority Page Relay Controller
- Normally Open and Normally Closed Relay Outputs
- Power rating of 350 W / Channel @ 70.7V
- High Level Audio Trigger Input (3V – 45V)
- Line Level Audio Trigger Input (10mV – 3V)
- DC Trigger Input (5V – 24V)
- Contact Closure Trigger Input
- Relay Recover Adjustment 1 - 30 Seconds
- Phoenix Type I/O Connectors
- Durable, Compact Black Metal Housing
- Dimensions:

Height: 1½" (38mm)

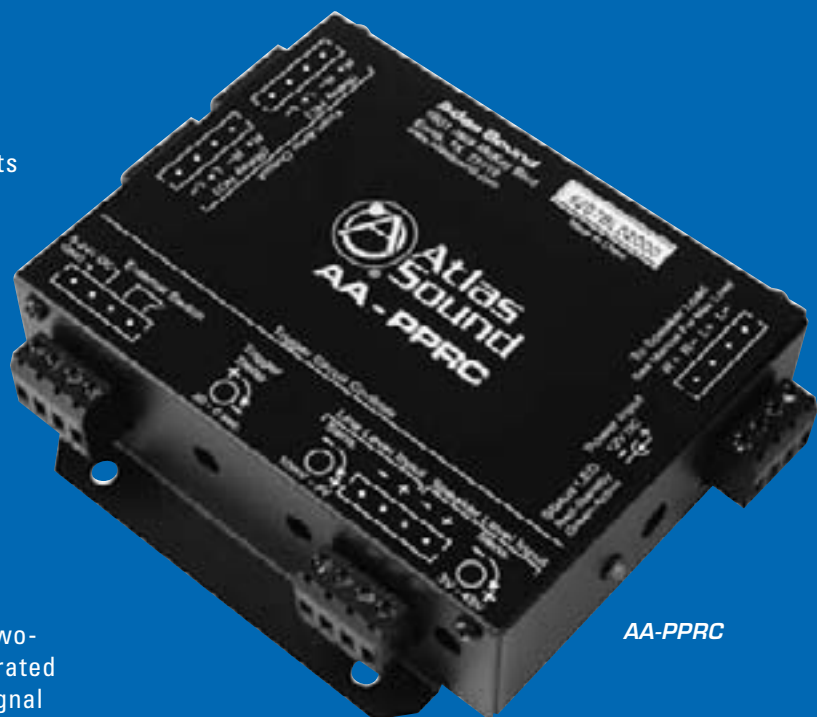
Width: 4" (114mm)

Length: 4½" (114mm)

- 12VDC UL Listed Power Supply (Included)

The AA-PPRC Priority Page Relay Controller is a two-input, by two-output speaker level switch system rated at 350 watts per channel. Inserting unit into the signal path between an amplifier's output and the speaker load allows system muting based upon a variety of external trigger sources including speaker level audio (3V to 45V), line level audio (10mV to 3V), external contact closure or 5 to 24 volts DC.

A typical classroom installation would utilize the AA-PPRC inserted between the presentation system amplifier and loudspeakers with a trigger input from the school's 25V paging / intercom system loudspeaker located in the same classroom. When a page occurs the presentation system will be muted for the duration of the announcement and will resume when the page is complete. Other applications include zone page management for new or existing systems and priority switching of line-level audio sources. Release time of the relay control is variable from 1 to 30 seconds.

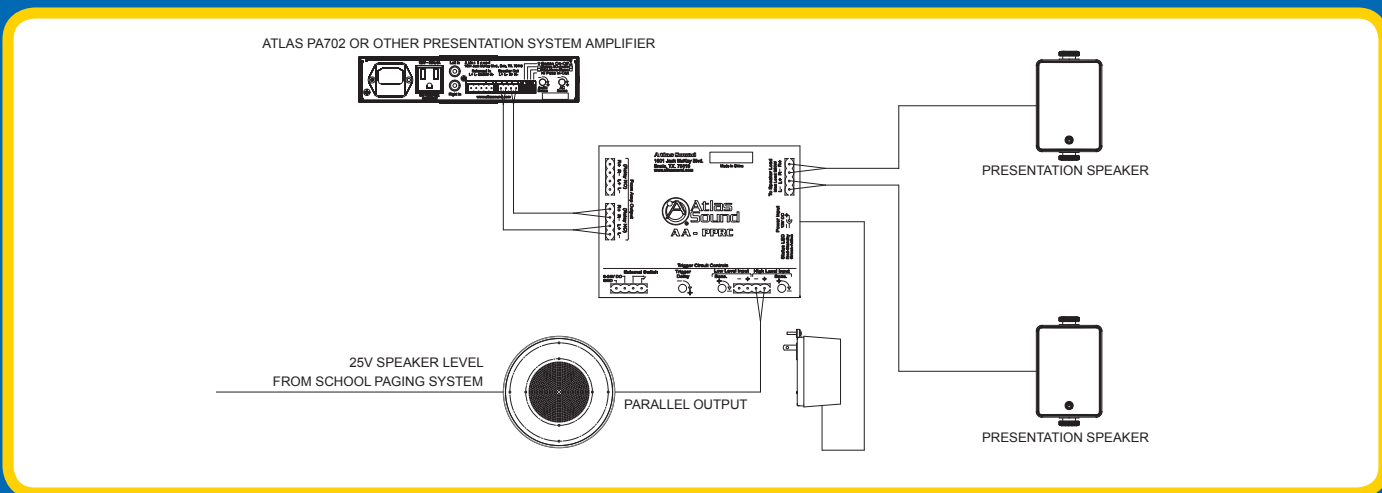


AA-PPRC



AA-PPRC
(Back)

Typical Classroom Installation for the AA-PPRC



AA35 / AA60

- 3 Chanel Mixer Amplifier
- 1 Mic Input w/ Phantom Power
- 2 Stereo Line Inputs
- Dual Line Out
- Pre Out / Power In EQ Patch
- Remote and Vox Activated Mute
- Route Any Source Combination or Entire Mix Bus to Zone 2 (MOH Out)
- Special Low Cut Filter is 6dB / Octave at 400Hz and Also Bypasses Front Panel Bass Control to Allow use with Paging Horns like APX40TN and AP-15T
- UL Listed 60065
- Optional Rack Mount Kit – AARMK2-5

The AA35 35 Watt output & AA60 60 Watt output are 3 input mixer amplifiers designed for distributed business paging and background music (BGM) systems, small to medium speech privacy systems and in applications where music on hold (MOH) plus paging is required. With one microphone input and two stereo line inputs these units will accommodate a variety of input sources including paging microphones, CD players and digital music receivers. A dip switch selectable matrix allows the creation of a zone 2 mix from any or all of the input sources for music or messaging on hold applications. 25V, 70.7V, and 8Ω outputs are provided. Output power will match nicely with Atlas Sound FAP, SM, SD, and GD series loudspeakers. In fact, **in an 11' ceiling application, the AA35 will provide power for up to 117 SD72W loudspeakers tapped at .25 watts each while providing upwards of 84dB in the direct sound field at ear height!**



AA35



AA60
(Back)

AA120 / AA240

- 6 Channel Mixer Amplifiers (120 and 240 Watt Versions Respectively)
- 5 Mic / Line Inputs with Phantom Power and 1 Stereo Summing Aux Input
- Remote or VOX Mute Capabilities
- Zone 2 MOH Out From CH6 Line Source
- Special Low Cut Filter is 6dB / Octave at 400Hz and Also Bypasses Front Panel Bass Control to Allow Use with Paging Horns Like APX40TN
- Bridge In / Out Circuit with Balanced Link / Internal Relay to Engage Circuit is Perfect for Small Room Combining Systems - Eliminating the Need for External Electronics
- VCA Control Assignable to Input 6 Line Level (BGM) Input or Global for the Mix Bus
- Pre Out / Power Amp in for Patching External Processors
- UL Listed 60065
- Optional Rack Mount Kit – AARMK2-0

Looking for an amplifier to suit a large retail, commercial, or industrial paging and background music application? Look no further than the Atlas Sound AA120 amplifier. This powerful 120 watt amplifier was engineered with unique features to assist the contractor or installer in today's commercial business audio environment. **This six input unit features extensive muting and output options along with a very unique bridge in/out feature to allow combining of multiple amplifiers in ballroom applications without the need for external relays.** VCA control is included which may be assigned to the BGM input or globally for the entire amplifier. For higher output requirements, the model AA240 is available with the same preamp section as the AA120, but with a larger 240 watts power amp section.



AA120

AA240
(Back)

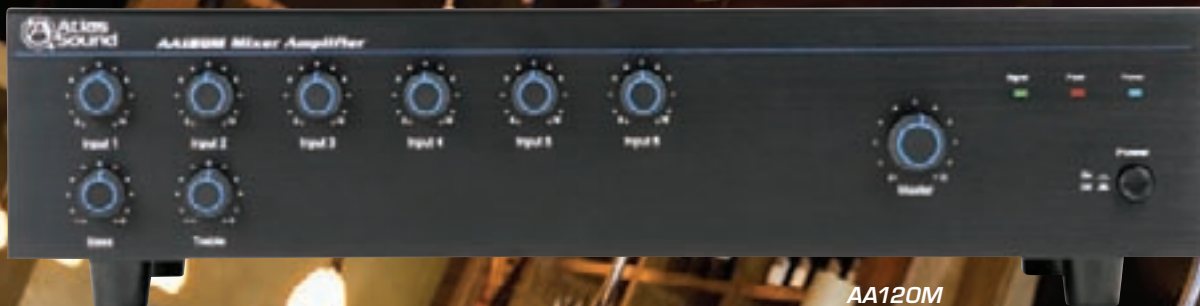
AA120M

- 4 Mic Inputs
- 1 Stereo Line (BGM) Input
- 1 Module Input
- Input Trim Control per Channel
- Channel 2 – 5 Can be Configured for Mute Receive or Mute Send
- Separate Zone 2/3 Matrix Per Channel
- Module Input Features Mix Bus or “Amp Direct” Routing (Perfect for Sound Masking as Masking Source is not Affected by Front Panel EQ Settings and Treble Control Can be Used for Adding High Frequency to Page in Masking Systems)
- VOX Mute and Contact Closure Mute May be Assigned Separately for Virtual Dual Level Mute Priority Via Internal Jumpers
- VCA Control Assignable To CH5 BGM Input or Main Mix Bus
- Bridge I/O with Relay Like AA120 / AA240
- Zone 2 / 3 Output (Line Level and 1 watt 8Ω)
- 24VDC Output and Patchable Relay Assignable to CC or VOX Mute Circuit (Allows Use of Atlas Priority Attenuators Without any Additional Hardware)
- UL Listed 60065
- Optional Rack Mount Kit – AARMK2-0

Atlas Sound's AA120M is possibly the most versatile mixer / amplifier on the market today. True 3 zone matrixing (main 120 watt output, 1 watt output and line level output), 24VDC output with relay sync to the mute bus, bridge in / out with built-in relay control, one industry standard module input with direct to mix bus or direct to amp assignment, global or BGM input VCA control and multiple mute bus configuration options round out the unit's extensive feature set. The AA120M is ideal for applications like sound masking, industrial paging, retail and BGM, commercial PA, priority volume control applications and hotel ballrooms / meeting rooms.

Optional Modules For Use With Model AA120M

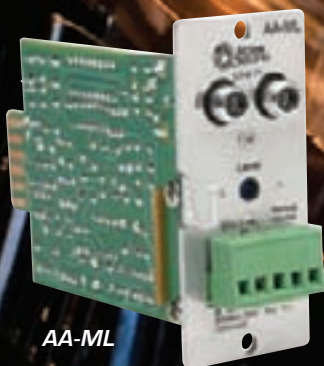
AA-TG	Three Tone Chime Generator Module
AA-ML	Mic / Line Input Module with Remote Volume (VCA)
AA-SMG	Sound Masking Generator Module with EQ and Patch Point for External Processors



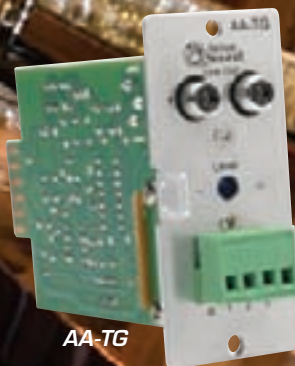
AA120M



AA120M
(Back)



AA-ML



AA-TG



AA-SMG

CP400 / CP700

- Commercial Duty Stereo Power Amplifiers
- 400 Watts and 700 Watts Versions
- Two High Quality Internal Toroidal Transformers Provide Isolation in 25V, 70.7V, 100V Stereo or 140V / 200V Bridge Mode Operation
- 30-Position Rear Panel Stepped Input Gain Controls
- Terminal Block and XLR Input
- Automatic, Dual Speed, High Efficiency Fan Cooling
- Short Circuit, Thermal, and DC Offset Protection
- UL Listed
- CP700 provides 350 Watts / Channel @ 70.7V
- CP400 provides 200 Watts / Channel @ 70.7V

Professional grade audio power amplifiers specifically designed for demanding contractor applications feature an esoteric grade toroidal power supply and output transformers. These transformers were chosen for their outstanding reliability as well as extended frequency response (-3dB @ 30Hz - 70.7V output through transformer). **Now you can have the peace of mind that systems will have true transformer output isolation, a feature that previously may have not been affordable due to the cost of quality external transformers.** Independent channels are driven by separate power supplies to ensure maximum channel separation and ultra low distortion figures while providing years or faithful service. Whether your application is a large distributed constant voltage sound system or a high SPL sound reinforcement system, the Atlas Sound CP Series is the perfect answer for high power / low cost amplification needs.



CP700

CP400
(Back)

PA702

- Feature Set Perfectly Suited for Projection Systems
- Innovative, Patent Pending Through Chassis Pole Mounting System Simplifies Installation and Secures the Amplifier
- 2 X 70 Watts @ 8Ω
- AC Current Sense & Audio Sense Turn-On
- Balanced & Unbalanced Inputs
- Available in Black or White
- UL Listed 60065 and RoHS Compliant
- Optional Rack Mount Kit – PA702-RMK

Atlas Sound pole-mount amplifiers provide an innovative solution for display systems that require local sound reinforcement.

Since the first pole-mount projector, there has been a dilemma about how to best provide local amplification. The PA702 amplifier is a very elegant solution to this issue with its unique, patent pending mounting pole installation process via a sealed hole incorporated into the chassis design. Simply install the 1.5" pole, slide the amplifier on it through the chassis hole, and clamp the unit at the desired height with the included innovative pole clamp system. Afterwards, install the projector as normal. The chassis "hole" mounting system also provides added security to help deter theft. Output is a strong 70W x 2 from an efficient rail tracking Class A/B & switch mode power supply technology.

Other innovative features include an accessory outlet with AC current sense that allows the amplifier to respond instantly from stand-by mode when the projector is powered on, a separate audio sense turn-on, balanced phoenix style and unbalanced RCA inputs that can be mixed by level control, front panel status LEDs, and recessed tone and level controls.

The slim 1RU profile chassis also works in a single or dual rack mount configuration with the optional rack mount kit, PA702-RMK.



PA702

Strategy Series® Amplifiers



PA702-W



PA702 (Back)

PA1001G

- Feature Set Perfectly Suited for Projection Systems
- Innovative, Patent Pending Through Chassis Pole Mounting System Simplifies Installation and Secures the Amplifier
- 100 Watts @ 70.7V
- AC Current Sense & Audio Sense Turn-On
- Remote Volume Control (VCA)
- Accessory Outlet with Surge Protection and AC Fault Indicator
- Balanced & Unbalanced Input
- Unbalanced Line Output
- UL Listed 60065 and RoHS Compliant
- Optional Rack Mount Kit – PA702-RMK

The PA1001G is a powerful 1-channel Strategy Series® amplifier featuring the patent pending mounting system via a sealed hole incorporated into the chassis design.

Like the PA702, it features the through hole patent pending mounting system for easy installation of local sound reinforcement.

The PA1001G is a full 100W x 1 output and features balanced Phoenix style and unbalanced RCA input connections, which can be mixed using a level control. Other features include an accessory outlet with AC current sensing, separate audio sensing turn-on, mixer trim control, front panel status LEDs, and recessed screwdriver adjustable tone and level controls. The current sensing and audio turn-on features allow the PA1001G to respond from standby mode when the projector is turned on remotely or when an audio signal is received. The slim profile chassis can also be single or dual rack mounted with an optional rack mount kit in a 1RU high configuration.



PA1001G
Mounted on PA702RMK

PA601

- Simple Clean Power
- 60 Watts Single Input Power Amp
- 1 Balanced Input
- 1 Unbalanced Input
- 1 Unbalanced Line Output
- Loudness Contour Switch (+4 dBu @ 100Hz and 10 kHz)
- UL Listed 60065
- Optional Rack Mount Kit – AARMK2-5

The PA601 is the perfect choice for distributed Background Music (BGM) systems when the requirement is simple amplification without Music On Hold (MOH) or advanced mix functionality. The PA601 features 60 watts of pure power in a compact package with simple rear mounted RCA & Phoenix inputs and RCA Outputs plus a unique loudness contour control which provides just the right amount of bass enhancement for low level listening environments.



PA601



PA601
(Back)

Amplifier Accessories

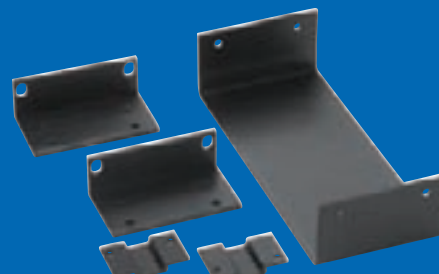
- AAIT-600 600Ω isolation input transformer for all AA series
- AARMK2-0 Rack Mount Kit for one AA120 / AA240 or one AA120M
- AARMK2-5 Rack Mount Kit for one or two AA35, AA60, or PA601
- PA702-RMK Rack Mount Kit for one or two PA702 / PA1001G.
- AAVCC-5 5 piece Security cover kit for all AA Series
- AAVC-10K 10K Linear pot on Decora plate for VCA use with AA120 / AA240, AA120M (includes white and ivory inserts, knobs and trim ring)



AAVCC-5



AAIT-600



AARMK2-5



AAVC-10K



Standard & High-Power Siren Loudspeakers

HPG-100N Atlas Sound siren loudspeaker HPG-100N is a reflex-type loudspeaker with a rectangular molded bell. It is rated at 100 watts RMS in electronic siren use. HPG-100N provides optimum sound level output of 120dBA (measured at 1600Hz, rated power, 3 meters on axis) and features a directed dispersion range of 80° x 105° (1kHz octave band) to assure high-intensity acoustic penetration for electronic siren signals. **Unit contains the patented Atlas Sound AS-100N compression driver complete with a non-fatiguing, self-aligning sound chamber assembly.** These drivers have earned acceptance as the quality and performance standard for 100 watt electronic signal systems in police, fire, ambulance, and utility vehicles throughout the world. A heavy-duty, one piece steel mounting bracket permits full-axis orientation of the loudspeaker for preferred sound-projection directivity. The projector assembly is manufactured of plastic and finished in black. The driver is finished in black baked epoxy for optimum durability and corrosion protection. Units are shipped complete with all components and installation data for field installation. Replacement head assembly (Model K-100N) or driver assembly (Model AS-100N) are available for field replacement.

Compression Drivers for Electronic Siren Application

AS Series heavy-duty weatherproof compression drivers are recommended for application in stationary and mobile public address systems, emergency and law enforcement vehicles of all types. Driver is equipped with a 2¾" voice coil having a nominal impedance of 11Ω at rated power. Non-fatiguing phenolic diaphragm is a formed, self-aligning assembly capable of field replacement. AS-100N is a 100 watt driver designed for high-powered signaling applications. It features a non-fatiguing, self-aligning sound chamber assembly and is a standard component of the popular HPG Series siren loudspeaker assemblies unit and will accommodate any horn or reflex projector equipped with standard 1⅜"-18 thread. AS-100N is finished in black baked epoxy. Product series is suitable for use with matched control equipment for siren systems requiring AMECA (formerly AAMVA) certification to General Services Administration specification (KKK-A-1822C) or Article 8, Title 13 of the Cal. Admin. Code.

AMECA (Automotive Manufacturers Equipment Compliance Agency, Inc.)

Reflex Tip Assemblies, Bells, Adapters & Replacement Kits

Atlas Sound offers genuine replacement parts to service and maintain the performance of siren loudspeakers. See page xx for more information.



HPG-100N

AS-100N



YDA-TH



K-100N

Voice / Tone™ Emergency Loudspeakers

15 Watt Compression Driver Loudspeakers

VT Series / VTF Series. Patented and the proven performance standard around the world for effective sound and electronic signal transmission of emergency voice communications and tone signaling. Cost-effective series function as protective warning devices in intercom systems and as communication system loudspeakers in multi-occupancy and expanded space areas including high-rise residences, public buildings, health-care and educational facilities, banks, shopping areas, distribution centers, and transportation terminals. **High-efficiency compression driver provides optimum acoustic conversion efficiency.** Die-cast water sealed construction withstands vandalism, vermin, moisture, corrosion, and vibration.

Both the VT Series and VTF Series include a 70.7V or 25V transformer model. All Models include a 5mfd capacitor. VT Series are surface mounting units measuring 4¼" Square x 3¼" Depth. VTF Series are recessed mounting versions measuring 6" Square x 3¼" Depth. Both series install to a 2½" Depth x 4" E.O. Box (not included); VTF Series also requires Model A-R adapter ring. Models are available with choice of finish Red(R) or Neutral Gray(N). When used with compatible control equipment, all models comply with UL Standard 1480 — Speakers for Fire Protective Signaling Systems.



VTF-152UCR

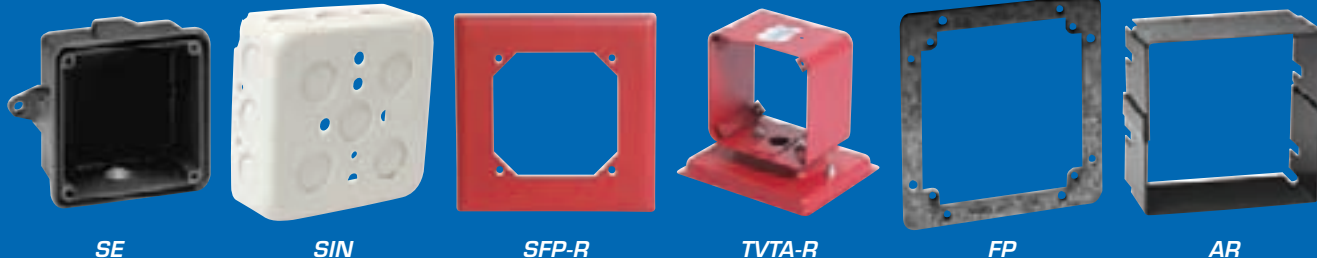


VTF-152UCR



VT-152UCN

Installation Accessories for Voice / Tone™ Loudspeakers



SE

Surface-mounting outdoor backbox provides weatherproof installation of VT Series / SVT Series loudspeakers. 4 1/4" Square x 2" Depth housing is die-cast zinc with epoxy finish. Unit is tapped for 1/2" conduit and includes weatherproof gasket. Suffix model with choice of color: Red(R) or Neutral Gray(N).

SI

Surface-mounting indoor backbox for VT Series / SVT Series loudspeakers mounts to any single or double-gang backbox for concealed conduit installation. 4" Square x 1 1/2" Depth CRS unit is finished in baked epoxy and includes 1/2" conduit knockouts. Suffix model with choice of color: Red(R) or Neutral Gray(N).

SFP

Semi-flush, 6" Square adapter plate mounts behind VT Series / SVT Series loudspeakers to cover any recessed 4" Square x 2 1/8" Depth outlet box. CRS wall plate is stamped and painted.

Suffix model with choice of color: Red(R) or Neutral Gray(N).
Dimensions: 6" Square x 7/32" Depth.

TVTA

Twin housing for bi-directional mounting of two independently powered VT Series or SVT Series loudspeakers. Ideal for wall or ceiling installation in corridors and walkways. Each unit includes 2 3/4" deep housing with base and adapter plate for parallel mounting to any electrical backbox.

Suffix model with choice of color: Red(R) or Neutral Gray(N).

F-P

Flush adapter plate for VTF Series loudspeakers provides for recessed mounting to 4 1/16" backboxes or solid exterior and hollow interior wall surfaces where a backbox is not required. CRS stamped construction.

A-R

Adapter ring for recessed mounting of VTF Series loudspeakers. Welded steel collar is 2" deep to provide necessary extension to any 4" Square x 2 1/8" Depth E.O. box. Includes four "S" clips. Finished in Neutral Gray.

M-R

Mounting ring with clips for recessed mounting of VTF Series / SVTF Series loudspeakers. Welded steel ring is 2" deep to provide extension to any 4 1/16" Square x 2 1/8" Depth backbox. Finished in Neutral Gray.



VTB-1



VTB-6



VTB-2

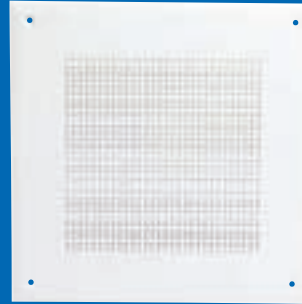
Compression Driver Without Housing or Mounting Plate

VTB Series. UL recognized compact high-efficiency Voice / Tone™ compression drivers are designed for custom installation in high-efficiency industrial communication, intercom, electronic alarm, and monitoring system applications including correctional facilities, transportation vehicles, construction sites, and drive-in menu boards. Models include integral exponential sound projector to provide reliable sound distribution and optimum intelligibility for the reproduction of voice and/or electronic tone signals. Die-cast zinc construction with water sealed driver will withstand moisture, corrosion, vibration, vermin, and vandalism. Models are available with a selection of multi-tap transformers and are designed to mount a variety of standard or custom housings and face plates to meet installation and application requirements. All VTB Series qualify as a UL 1480 recognized component.

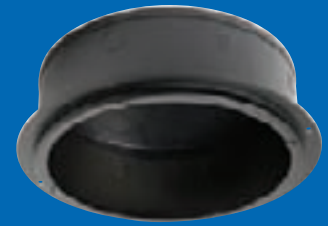
8" Loudspeakers with Single Voice Coil

UHT Series

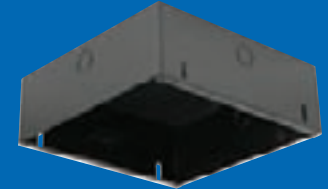
High-quality 8" ceiling or wall-mount loudspeakers for use in fire protective signaling, emergency alarm and audio evacuation systems are available with single voice coil, factory-mounted 5 watts multi-tapped transformer and two baffle styles to accommodate varying code and aesthetic requirements. UHT Series loudspeakers have a single 1" diameter voice coil, choice of 70.7V or 25V transformer, and DC blocking capacitor. **All units are shipped pre-assembled to reduce installation labor, time and expense.** Loudspeakers are equipped with a molded, fire-retardant, moisture-proof cone with whizzer and 10 oz ceramic magnet to deliver smooth frequency response with high intelligibility and minimal distortion. Transformer has a core size of 1/2" x 5/8" (13mm x 16mm) and insertion loss of 1.5 dB. All models terminate with 6" color-coded leads. UL Listed loudspeaker packages must be used with UL Listed enclosures indicated to maintain UL Listed status. Listed under UL Standard 1480—Speakers for Fire Protective Signaling Systems. As always, confirm specifications with local building codes.



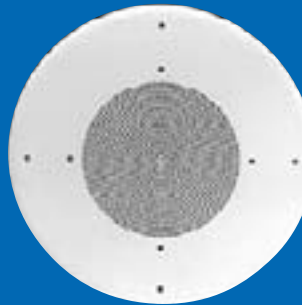
161-8



96-8



198-8



51-8



95-8

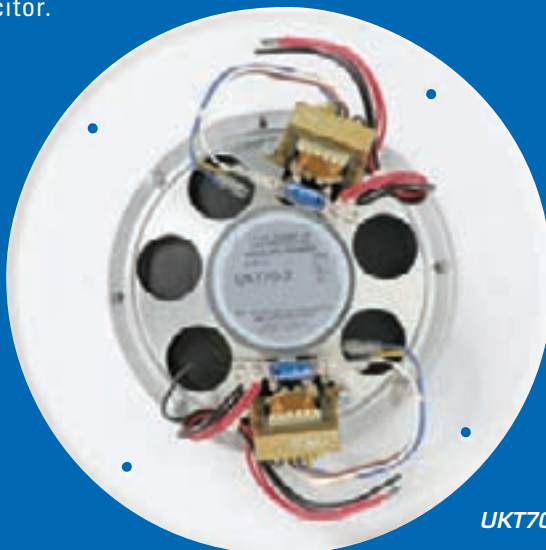
8" Loudspeakers with Dual Voice Coils

UKT Series

UKT Series of 8" loudspeakers have mostly the same feature set as the UHT Series for use in fire protective signaling, emergency alarm and audio evacuation systems. The primary distinction is the UKT Series loudspeakers are equipped with two 1" diameter voice coils, two transformers (specify 70.7V or 25V), and a DC blocking capacitor.



UHT70C-U51-8

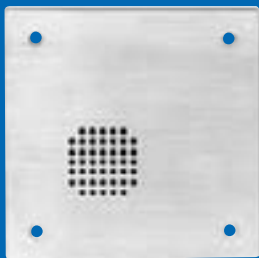


UKT70C-U51-8





VPCS-2GPB-X45



VPVT-PB



VPB-1A



VP-77



WPVT-4FN

Vandal-Proof Intercom Stations

Stations with Cone Loudspeaker & Call Switch Option

VPCS Series. High-security vandal-proof loudspeaker stations are equipped with a 2½" diameter moisture-proof resin impregnated cone loudspeaker for clear voice / signal transmission with durable performance. The overall depth of all units is a shallow 2½" (54mm) allowing installation in standard size E.O. boxes. VPCS-2G Series and VPCS-2GPB are 2-gang versions. VPCS-3GPB-245 is a 3-gang model. All models include a two-piece die-cast barrier (patent pending) to protect the loudspeaker assembly from vandalism. Models with "PB" designation include a vandal-proof call switch. The switch is a heavy-duty, momentary action push-button with a 1.5A 250VAC contact rating. The 25V transformer has .25, .5, 1 & 2 watt taps.

Plate-Mounted Call Switch

VPB-1A. Intercom accessory includes a vandal-resistant push button mounted to an all new single-gang, 12-gauge stainless steel plate which may be used in conjunction with VPVTPB, VPCS-2G-2(PB) and VPCS(PB) Series intercom stations. Switch may also be used as a stand alone signaling device when a separate or remotely located call-origination button is desired. Switch is a SPST normally open circuit with a 3-amp contact rating. Hardware installs using a 6–32 holt-head driver bit for a standard ¼" nut driver.

Stations with Compression Driver & Call Switch Option

VPVT-4PB Series. Loudspeaker station with high-efficiency compression driver mounted to a 12-gauge stainless steel plate provides two-way communication for vandal-proof use in detention facilities, correctional institutions, and secured access applications. Rugged recess-mounting assemblies incorporate the patented VT Series, environment-resistant compression driver; recognized throughout the world for dependable performance and effective voice and signal tone distribution. **High-intelligibility, 8Ω compression driver also functions as a microphone to provide clear voice communication.** VPVT-4PB incorporate a vandal-resistant call-origination button with 3 amp contact rating to provide call-in signaling capability. Station available in high-power 15 watt models with 25V transformer. VPVT-PB Series measures 7¼" square and installs into VP-77 backbox. Backboxes are ordered separately.

Recessed Backbox for Vandal-Proof Stations

VPVT-4PB. Protective backbox is constructed of 16-gauge CRS and finished in black textured enamel for installation of specified vandal-proof loudspeaker station assembly.

Stations with Compression Driver and Call Switch

WPVT-S / WPVT-F Series.. Surface and flush-mounting outdoor intercom and paging loudspeaker assemblies provide weatherproof and vandal-proof two-way communication with call-in capability for remote guard and security stations, entry and exit gates, perimeter doors and parking garages.

Environment-resistant assemblies include die-cast water sealed VT Series 8Ω compression driver loudspeaker available with 15 or 2 watt transformer and pre-mounted call SPDT-type switch protected by a weatherproof rubber boot. WPVT-S Series are surface mounting assemblies size 4¼" Square x 3⅛" Depth. WPVT-F Series are recess / flush-mounting versions size 6" Square x 3⅞" Depth. Both model series are finished in neutral gray(N) epoxy and install to a standard 4" E.O. Box (not included). A large selection of installation accessories are also available. See Installation Accessories for Voice / Tone Loudspeakers page xx.

Visikom Telephone Visitation System

PVP-24 / PVP-6. Modular telephone intercommunication system accommodates up to 24 independent telephone conversations of two or more telephone stations each for use where physical separation between communicating individuals is desired. Typical applications include customer telephones and visitation areas of detention, correctional and penitentiary facilities. System is comprised of PVP-24 control unit, PVP-6 plug-in interface module and standard telephone stations with two form "C" (DPDT) hook switches including Atlas Sound CE Series. A Surface-mounting control unit includes power supply, four 3/4" cable access holes and ports for installation of up to four PVP-6 modules. Each plug-in module will control up to six isolated telephone circuits for a total system capacity of 24 circuits. Chassis and lift-off cover are constructed of 18-gauge CRS and finished in textured black epoxy. Wiring requirements are two conductor, telephone type. For complete wiring and installation information, see AtlasSound.com.



PVP-24



CE-2A-AC

TS302A

LT600-VC

TPS24-05

Telephone Intercom Stations & Accessories

Wall Mount Handset / Hookswitch Assembly

CE-2A. Economical handset assembly provides clear and crisp speech reproduction for intercom and paging functions. It includes a "500" style handset and two form "C" (DPDT) hook switches mounted to a 2-gang plate with rear mounted terminal strip, color coded leads and spade lugs. Model features a chrome hanger hook switch, neutral handset, flexible coil cord and stainless steel plate for mounting directly to a standard E.O. Box.

PT Option. Factory-installed push-to-talk handset button provides for relay control and a variety of switch, communication, and signaling functions. Contact switch arrangement is SPDT wired as normally open. Option is available on CE Series telephone stations as noted.

AC Option. For telephone vandal protection, this 25" stainless steel armored cable securely fastens the mounting plate and handset for service-free operation in public access areas.

Telephone Intercom Enclosure

TS302A. Surface-mount 2-gang enclosures designed for CE Series intercom stations. CRS unit is finished in neutral gray epoxy

600Ω Impedance Matching Transformer

LT600-VC Versatile unit for matching telephone-type, 600Ω line circuits with HI-Z circuits. It can also be used as a 600Ω to 600Ω isolation transformer. Recommended for coupling of telephone-type lines into amplified sound systems, background music and paging systems, recording equipment, or studio electronics. Built-in potentiometer provides optional adjustability for the 25K output level. The 600Ω input may be matched to 600Ω, 10KΩ and 25KΩ circuits. All components are mounted on a printed circuit board. Steel chassis includes mounting ears and "insta-mount" tape. Transformer is shielded to minimize induced hum. Unit includes a phono jack on the output side for convenient connection to amplifier or other equipment circuitry. Jack can be connected to various transformer taps via barrier strip jumper. (Factory-installed jumper connects jack to potentiometer output).

Telephone Power Supply

TPS24-05. A combination 24VDC/TALK voltage power supply engineered to power most common-talk telephone intercom systems (Section 8). Includes 6' power cord and black epoxy finish. For information on common-talk intercoms, see SL8-1433 at AtlasSound.com.

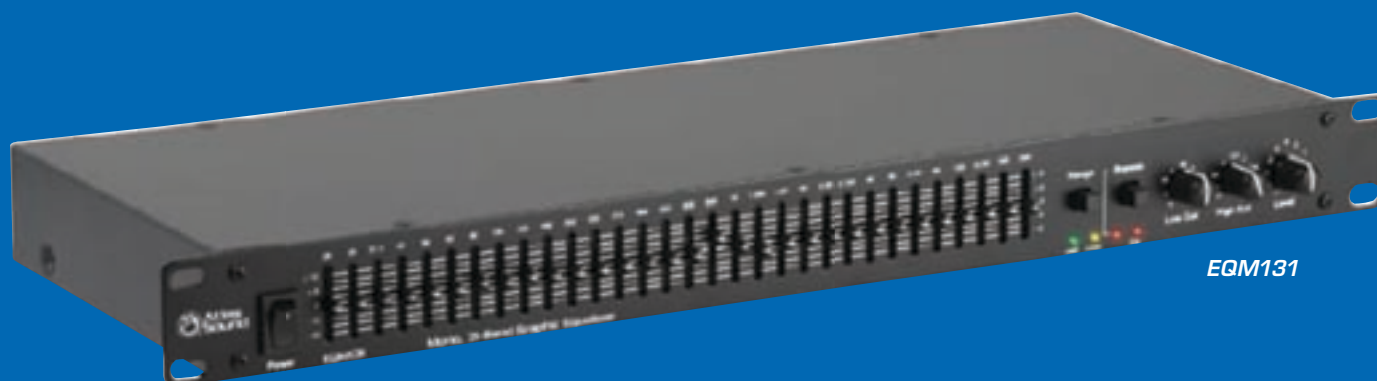
**AA-GPN1200**

AA-GPN1200

General Purpose Generator

AA-GPN1200 is an analog masking signal source and generator. It is capable of producing both white and pink noise for basic masking systems or audio equipment testing. It is designed to help eliminate the auditory distraction associated with open office plan environments as well as providing conversation privacy in facilities such as schools, churches, restaurants, and offices when used with appropriate masking loudspeakers and amplifiers.

The AA-GPN1200 features a variable balanced output via Phoenix connector and will deliver a 1V balanced output that will match input circuits of Atlas Sound equalizers and amplifiers. A variable High Cut filter supports basic sound masking equalization with the EQ filter operating between 1kHz and 8kHz with a 6dB/oct slope. This small but effective generator can be used standalone or rack mounted (rack mount kit included), with up to three AA-GPN1200 in a single 1RU when multiple zones are needed. Controls are rear mounted to help prevent unauthorized adjustments.

**1/3 Octave Equalizer**

EQM131

The EQM131 will provide basic system equalization for sound masking or general public address applications at an amazingly affordable price.

The 1RU EQM131 is easily connected to any system via rear panel balanced TRS and XLR jacks. Unbalanced RCA connections are also provided for use with -10dBV equipment. Front panel mounted Low Pass Filter / High Pass Filter and level controls are provided along with a switch for ± 6 or ± 12 dB operation and 31 sturdy 20mm filter slide controls. The ISO centered $\frac{1}{3}$ octave bandwidth-constant Q filter design minimizes interaction between filters yet is still wide enough for creation of correction curves.

When used with the Atlas Sound AA120M mixer amplifier and AA-SMG sound masking module, the EQM131 can be used to create a $\frac{1}{3}$ octave masking spectrum which is fed directly to the AA120M amplifier section. Paging or music inputs can receive high frequency shelving equalization for better intelligibility from the AA120M front panel controls. The page / music inputs and masking module output can then be summed without affecting the masking source spectrum equalized by the EQM131.

ASP-MG24 / ASP-MG24TDB

- Four White / Pink Noise Generators & 2 Mic / Line Inputs with 4-Channel DSP Processor
- Generator Spectral Purity ($\pm 0.1\text{dB}$ @ 0Hz – 20 kHz)
- Precision Pink Noise Filtering (-3dB per octave low-pass)
- Extended “Non-Apparent” Repeat Time of Noise (200 Minutes)
- Combined 1/3-Octave & Parametric Equalization per Channel
- Selectable High & Low Frequency Shelving Filters per Channel
- High Pass Filter & Low Pass Filter with Variable Frequency & Slope per Channel
- Leveling, Compression, Limiting, & Soft-Gating per Channel for use with Paging Input
- Output Delay, with Distance / Delay Calculation, per Channel
- Independent Matrixes for Channel-To-Channel Mixing
- Variable Noise, Input, and Output Levels with Software Metering
- Thirty Non-Volatile Memory Presets Store / Recall Settings
- Balanced Inputs & Outputs
- Programming Software Included
- No Manual Controls on Front Panel, to Prevent Tampering
- Remote Control via USB, RS-232, Ethernet & Accessory Control Panel
- Incorporates AES Recommended Grounding Practices
- UL / ULC Listed External Power Supply

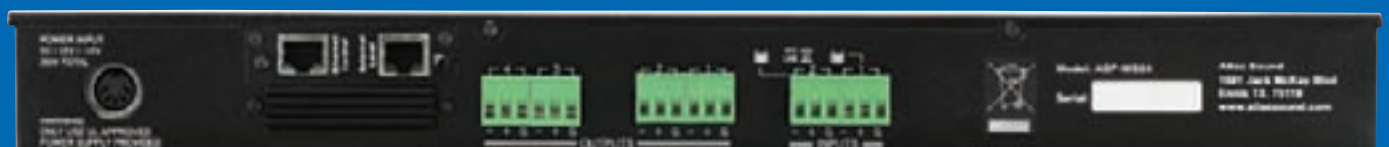
ASP-MG24 represents the latest technology in digital signal processing (DSP) engines for sound masking generator/equalizers. This model features 4 built-in digital noise generators and two analog inputs specifically suited for paging input sources. These inputs can be configured for mic or line level.

The ASP-MG24 advances sound masking control to a whole new level while providing the secondary benefit of loudspeaker processing for the most popular Atlas Sound loudspeaker systems.

Consultant on Sound Masking for Atlas Sound – Dr. Robert Chanaud

He has authored several masking software programs including SCOPE, which provides detailed speech privacy analyses of planned open and closed offices under a variety of conditions. The program also is used to evaluate the privacy of existing offices and is used to provide the optimum background sound. As a consultant to Atlas Sound, he has been instrumental in developing new products for sound masking applications including the ASP-MG24.

Dr. Chanaud owns a number of patents and has authored many technical articles on office acoustics and masking sound systems. You can find many of these articles at AtlasSound.com



(Back)

The ASP-MG24 is a 1 RU, 6 input x 4 output DSP configurable by a very intuitive set-up GUI. Four inputs are tied to independent white / pink noise generators with adjustable ramp-up time to allow gradual acclimation to masking levels. Two additional inputs are available for mic or line sources to allow paging and/or music sources to be blended with the masking sources to any of the 4 outputs. This 6 x 4 mix matrix provides the following configuration options for sound masking systems:

1. 1, 2, 3, or 4 Channel Masking
2. Dual Two Channel Masking
3. Single Channel Paging
4. Dual Channel Paging (From Single Page Input Source)
5. 1, 2, 3, or 4 Channel Mixed Paging & Masking
6. Dual Channel Mixed Paging & Masking

Dedicated $\frac{1}{3}$ octave filter sets are available for each of the 4 generator outputs, 8 band parametric EQ blocks along with dynamic control are available for each of the two mic/line inputs. Any mix of all 6 inputs may be easily matrixed to the 4 output DSP blocks for additional parametric equalization, delay, and limiting (if required).

Factoring in all features, a very complex 4-zone sound masking system can be easily configured with 2 external music or page sources.

For loudspeaker control functionality, the ASP-MG24 may be configured in 2 input x 4 output mode for stereo full range. Other configurations include full range plus sub operation with Atlas Sound FAP Series ceiling speakers, SM Series surface mount speakers, or AH Series stadium horns for complete control of crossover types, equalization, delay, and dynamic control.

Computer interface is simplified by USB or RS-232 connection (no awkward USB to Serial adaptors required!). External UL / ULC Listed international voltage power supply is included.

ASP-MG24TDB

ASP-MT24TDB incorporates all the features of the standard model with the addition of time / date level control of all 4 masking inputs for holiday and weekend scheduling. This powerful scheduling tool ensures maximum speech privacy in facilities that may be more or less densely occupied during various times of the day or days of the week. Ethernet control functionality is also incorporated into this model to provide control of multiple units (up to 32) via a standard network switch and also allows remote access and monitoring via LAN.



Main Screen



EQ Section

Sound Masking Done Right



The comprehensive guide to Sound Masking Design and installation. Written by Dr. Robert Chanaud. Available exclusively from Atlas Sound, call 800.876.3333 to order.

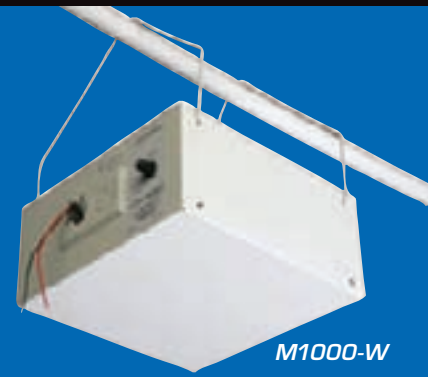
Suspension Mount Sound Masking Loudspeakers

M1000. This masking speaker assembly is designed to accurately reproduce the needed spectrum of masking signal into the plenum space. The innovative 712in³, square enclosure ensures ample low frequency response. A specially designed 8" dual cone loudspeaker is included in the package. A high efficiency 70.7V internal transformer is coupled to an external selector switch for easy system tuning. For more precise adjustments, a wide selection of wattage taps ranging from .25 to 4 watts plus an off setting are provided.

EZ hang brackets simplify installation. This innovative suspension system utilizes two collapsible galvanized hangers configured to allow quick upward or side firing installation. The hangers are factory-installed on the unit and fold flat for shipping. To meet most local code requirements, the M1000 includes an innovative cover containing both knockouts and a strain relief. This system will allow the use of rigid or flexible conduit (if required) and easily accommodates "through" connections on the removable plate.



M1000



M1000-W

M1000 is finished in neutral black.

M1000-W is finished in neutral white and includes a transformer bypass setting on the tap selector switch for 8Ω direct-coupled use. This unit is perfect for use in light colored open plenum environments or with masking systems powered by VARIZONE Performance-Line Programmable Amplifier Modules (PAMs).

UL 1480 & 2043 listed

Also available optional suspension chain kit, MCHAIN72, 72" chain with two "S" hooks.



AM1200

AM1200 Sound Masking System features a compact enclosure utilizing two efficient wide range 2" x 4" speakers that are powered by an internal 12W amplifier. Selectable white and pink analog sources are incorporated to allow maximum masking design flexibility and a variable high cut filter contours the masking noise to the appropriate environment. The AM1200 also features an external 12 Watt 70.7V amplifier output to drive other 70.7V speakers, such as the Atlas Sound M2000-SM transducer, making it ideal for small installations that require a self-contained masking system. Four mounting holes on the chassis make installation flexible as the AM1200 can be mounted to the wall or ceiling, or if you need a single suspension point, two removable hanger brackets are included.

T-Bar / Channel Support Sound Masking Loudspeaker

M812-S2T7-BX-RS. Loudspeaker/enclosure masking assembly helps maintain a successful acoustic environment in open plan and partitioned office designs with T-Bar supported ceiling systems. Unit includes square enclosure with upward sound dispersion, 8" loudspeaker with pre-mounted 70.7V transformer, channel support rails, rotary switch wired to transformer primary, BX style conduit box complete with 1/2" conduit knockouts and all necessary mounting hardware. 529in³ enclosure is finished in black epoxy and acoustically treated with undercoating and fiberglass to absorb resonance associated with high-frequency sound transmission. Transformer is supplied with .5, 1, 2, and 5 watts primary taps.



M812-S2T7-BX-RS



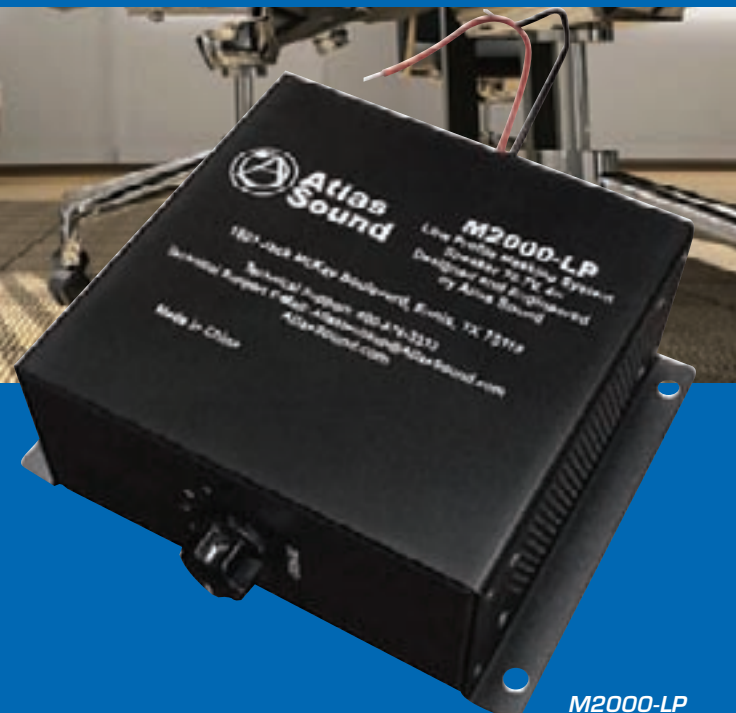
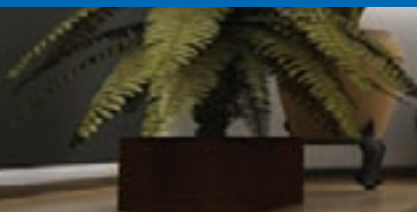
M2000-SM

Security Masking

M2000-SM

The M2000-SM is designed for security masking applications where disruption of planar surfaces is required to thwart laser microphone sensors. Surfaces where masking might be considered would include: windows, doors, walls, ducts or any flat surface.

The unit is a two-part assembly (not sold separately) consisting of a transducer / enclosure and an external transformer interface. The transducer employs NXT™ exciter technology with a 1" plate mounted coil housed in a discrete, high impact plastic enclosure with 10' insulated lead wire for termination to the external transformer. Enclosure includes pre-installed 3M™ "peel and stick" adhesive for simple, quick installation to most flat surfaces. Transformer assembly includes .25, .5, 1, 2, & 4 watts @ 70.7V with simple "keyhole" slots for remote mounting.



M2000-LP

M2000-LP

The M2000-LP is designed for use in access floor systems or other low height areas where sound masking sources might be concealed. (For access floors or plenum spaces exceeding 12" the M1000 masking speaker is recommended) The CRS chassis houses two, 2" x 4" side firing paper cone speakers and 70.7V transformer with available taps of .25, .5, 1, 2, and 4 watts (plus off) adjustable via a front mounted switch.

A ROMEX® style strain relief clamp secures two 18-gauge color-coded leads and two wire nuts are provided for termination.

ControlKom™



Features

IP Network Based

- Deploy rapidly - Utilizing an existing data network, connecting your facilities and adding paging, text, and controls takes very little time
- Perfect for district wide and local campus communications including weather related notifications, emergency, and lockdown situations
- **Get your message out quickly and reliably - whether recorded or live, it can be broadcast in less than 20 seconds to an unlimited number of IP speakers, computer screens, and overhead paging systems**
- Network time server synchronized clocks – Require no maintenance or budget for additional hardware; perfect for daylight savings and schedule changes
- Power over Ethernet (PoE) - Speakers can be placed anywhere network access is available

System Control and Security

- District wide system manageability
- Programming, configuration and system supervision can be administered from multiple locations via the Graphical User Interface (GUI) from any secure LAN location or outside the network through VPN
- Multi-user management, configurable security access level for bell scheduling, notifications, changing zone assignments, etc...
- Unlimited customizable bells and schedules
- **Facilitates communication with campus personnel - in K-12 applications, district personnel can broadcast to the entire district, campus, building, zone, classroom, even an individual IP speaker**
- Multiple, simultaneous schedules can be broadcast within the same facility - have one bell schedule for kindergarten and other schedules for other grade, each schedule can have different tones and played only in the designated classrooms
- Flexible bell tones - broadcast recorded tones, music, or audio clips as part of your schedule

Additional Communication & Control Options

- Desktop Agent audible messages can generate simultaneous computer screen text messages, alerts can be sent audibly or silently to individual computer screens or user groups
- Integrate building control and communications – software plug-in DORA (Direct Observation Real-time Alerting) can be integrated with existing safety and security systems providing additional notification and messaging

Live, prerecorded or ad hoc messages along with control data is sent over existing or new multicast enabled local area networks to Atlas Sound IP Speaker and zone controller end points powered by AF compliant POE switches (or local DC power). **This software / hardware combination provides a true "one wire" network audio solution reducing the initial cost and eliminating long term maintenance of separate paging / intercom systems.** ControlKom employs standard TCP/IP network protocols and DHCP for speaker IP address assignment making it the industry's first true IP based paging solution.

ControlKom is easily interfaced with any VoIP or analog PBX phone systems (analog extension output or ATA required). Configuration of the server based ControlKom software is accomplished via an intuitive web interface. This interface allows the administrator to easily define user privileges, loudspeaker zones, pre recorded messages and other system. ControlKom then provides the user with voice prompt instructions for message type (live or ad hoc) and desired broadcast zone destination.

ControlKom software distribution is limited to dealers who complete training requirements. Contact Atlas Sound for details.

Hardware Requirements

- Windows™ 2000 or 2003 Pentium-class server
- 2.5 GHz processor and 1 GB RAM
- Multicast-enabled network
- Atlas Sound IP Speakers and Zone Controllers
- IEEE 802.3AF Compliant PoE Switches

Model	Description
CK-K12-24	ControlKom Software, Live, Pre-Recorded, Ad Hoc Messaging, Scheduler, Desktop Agent Compatible (Includes 5 Seats) K-12 Applications ONLY. Supports 24 IP Speakers.
CK-K12-48	Same as Above for Supports of 48 IP Speakers.
CK-CLASSIC	ControlKom Software, Live, Pre-Recorded, Ad Hoc Messaging, Scheduler.
CK-PLUS	ControlKom Software, Live, Pre-Recorded, Ad Hoc Messaging, Scheduler, Desktop Agent Compatible.
CK-ENT	Enterprise Version of ControlKom Software, Live, Pre-Recorded, Ad Hoc Messaging, Scheduler, Desktop Agent Compatible, Region Functions.

Atlas Sound offers a comprehensive selection of loudspeaker products to complement ControlKom™ and InformaCast® software deployments in K-12, Campus wide notification, Civil / Municipal, Industrial, and Health Care applications. In complex zone paging scenarios IP speakers are often more economical than traditional paging speakers.

I8S

Basic IP Speaker for wall mount use in classrooms, hallways & corridors (interior only).

- Efficient 8" paper cone loudspeaker
- Durable white powder coat steel grille

I8SM

Same as I8S but with built in microphone.

- High quality mic off axis of loudspeaker minimizes feedback
- Use for 1/2 duplex communication with InformaCast / ControlKom® PTT feature only

I8SC

Same efficient 8" paper cone speaker as I8S.

- Durable powder coat steel grille
- Bright, 5 Character LED Clock Display

I8SCM

Same as I8SC with built in microphone.

I8SCH

Same as I8SC with APF Series Compression Driver.

I128SYS

1' x 2' "Drop In" tile replacement speaker system.

- Simple "cut & drop" installation
- 2' x 2' or 2' x 4' tile
- Integral enclosure
- Efficient 8" paper cone loudspeaker

I128SYSM

Same as I128SYS with built in microphone.

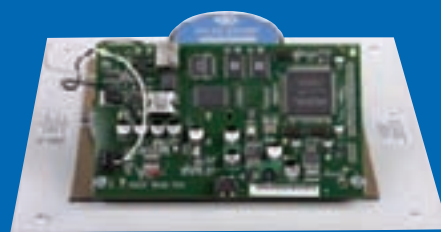
IHVP

Vandal resistant IP speaker.

- Weather Resistant Cast aluminum / stainless construction
- Efficient (104 dB 1 W / 1 M) APF series horn
- Conformally coated board for durability

Enclosures for IP Speakers

For installation flexibility a variety of IP speaker enclosure options are available in surface mount straight (SEST), surface mount angled (SEA) and flush (FEST) versions. Construction is 20-Gauge CRS. Options for weather resistant IHVP model include 18-gauge stainless steel flush (FEST) and surface mount straight (SEST) only. All surface mount units are finished in durable white electrostatic powder coat.



I8S
(Back)



I8SC



IHVP



IPS-ZC1

Zone Controllers

Atlas Sound Zone controllers allow simple integration of legacy systems with IP speaker control software. Single or dual zone versions typically rack mount in MDF / IDF locations and interface with existing or new Atlas Sound amps and traditional 70.7V loudspeakers. Output is balanced allowing simple twisted pair connection to amplifier. IPS-ZC1 includes single zone controller module & rack mount kit. IPS-ZC2 includes 2 zone controller modules & rack mount kit. Network input is via standard RJ45 connection. For applications without AF Compliant POE switches use optional power supply model IPS-PSU.

VARIZONE

DIGITAL PUBLIC ADDRESS SYSTEM

VARIZONE® VAB-Line

The Digital Public Address and Voice Evacuation system brings value-oriented design options to applications requiring complex messaging and music zoning

Expanding upon the successful VARIZONE Performance-Line installed in the James S. Brady Press Briefing Room at the White House and many other prestigious facilities, manufacturer Klotz Digital and North American VARIZONE distributor Atlas Sound are now offering the cost efficient VARIZONE VAB-Line system. This cost-effective system is built upon the feature-rich, flexible architecture found in the popular VARIZONE Performance-Line of components, **VARIZONE VAB-Line technology combines the proven efficiency and convenience of decentralized amplification with a newly-designed, centralized frame/controller.** Built expressly as a flexible solution capable of meeting the myriad challenges facing multi-zone, digital public address systems, VARIZONE VAB-Line is ideally suited for healthcare, retail, school, office, hospitality, and other complex messaging/music zoning applications where an affordable "one-box" matrix /amplifier with its own control makes sense.

At the heart of the new VARIZONE VAB-Line system lies the VAB1 Controller and Integrated Programmable Amplifier Module (I-PAM). With dynamic zoning capabilities and an intuitive graphical user interface offering consultants, designers and engineers more system options than ever before. The system has also been given straightforward routing capabilities offering 5 standard inputs and 32 standard dynamic outputs via an internal zone matrix. Standard onboard real-time diagnostics, emergency system override paging functions, and an 18-minute programmable message memory allow the system to be utilized for supplementary voice evacuation purposes as well. **These features, along with native DSP facilities including dynamics and EQ, are all configurable with VARIZONE Media Control software using simple USB interconnects.**

The I-PAM is a compact, two-channel, network addressable module providing 12 watts of power that can be used to drive eight-ohm loudspeakers along with inputs for local sources, volume control and GPI. Atlas Sound will be integrating the I-PAM with various in-ceiling speaker systems as a way of offering turnkey solutions fit for a variety of different applications.



VAB-1



I-PAM



V2404



VAB Switch

Technology by:

KLOTZ
DIGITAL



Varizone®

VARIZONE® Digital Audio matrix systems have been installed in many prestigious institutions including the James S Brady White House Press Breifing Room in Washington D.C.

VARIZONE routes all inputs and multiple digital format outputs to 32 individual press suites.