

Atlas Sound offers the largest selection of sturdy, convenient rack and cabinet solutions to organize, secure, and control your equipment. With five distinct series of floor racks plus wall mount, portable, desktop, and tilt out varieties, Atlas Racks is sure to have a model to meet any requirement. Atlas also offers the most versatile and complete line of rack accessories to guarantee your system incorporates the features and tools necessary.

Atlas floor racks are available in the 100, 200, 500, 700 and, of course, the top of the line FMA series for more options and flexibility in rack designs. With fixed or adjustable rails, door and lock options, gangable or standalone selections, and even seismic rated models in a variety of sizes and heights, Atlas Racks simply gives you more choices. All with straightforward part numbers that include RU height and overall depth for ease of ordering and accuracy.

Atlas Racks ensure proper specifications and requirements are met and exceeded every time no matter the style and size. Caster kits, lights, fans, panels, drawers, and even control computers are available accessories furthering your ability to design and facility any system's customized needs.

Compared to other rack manufacturers, only Atlas provides this quality and breadth of racks and cabinets as a part of its full line of products. Combining cost effective racks with other Atlas products can qualify for the industry's most aggressive free freight program.



*FMA Series
(Shown with Optional
Front Door, Side Panels, &
Roller Truck)*

With the addition of Atlas Sound model SBK-700, Atlas 700 Series Racks are Seismic Rated.



700 Series



500 Series



200 Series

100 Series



LISTED

All Atlas Racks are UL1678 Listed.

Every Atlas Rack exceeds UL standards for safety and structural support. This rigorous test not only guarantees strength and performance, but is a requirement in most commercial applications. Non-UL Listed competitive racks come with the risk of damage to equipment or injury.

FMA Series

Common Features

- Available in the Most Popular Heights & Depths
- Designed With Contractor Input to Meet Storage and Wire Management Needs for Today and Into the Future
- Rear Door Included as Standard
- 14-gauge Tops / Bottoms / Frames
- 16-gauge Side Panels
- Hat Sections are Completely Redesigned With Rail Slot and Retainer Hole for Extra Strength
- Return Added for "Stop" When Flush Mount Doors are Utilized
- Two Pairs of 12-gauge CRS Adjustable Mounting Rails Plated, Drilled and Tapped 10-32 With Hash Marks to Indicate Rack Unit Increments.
- Slots in Rack Rails for Cable Pass-Through and Front Door Hinge Access (Surface Mount Doors)
- Leg Levelers Included as Standard
- Holes for Optional Surface Doors are Pre-Drilled & Plugged
- Hat Sections Sized to Facilitate Standard 19" Panels -Handy for Mounting "Stick-On" Modules and Other Hardware
- Slots Maintained in Hat Sections for Wire Management
- Knock Outs on Removable Standard 2RU Panels (Rear of Cabinet Top & Bottom) Panel Includes 3/8" KOs for BNC Connectors (Perfect for Diversity Wireless Systems)
- Increased Vent Space on Top Sections
- Stocked in Scratch Resistant Textured Black (-962)
- Wide Selection of Convenience, Cooling and Electronic Accessories are Available
- 2RU Panel on Bottom for Cable Pass-Through Between Cabinets
- UL Listed (UL 1678)

G Series (Ganging) Specific Features (In Addition to Above Features)

- Lift-off, Locking Side Panels – "Swing-Out" Design Facilitates Easy Service Access
- Reinforced Stiffeners On All Side Panels
- Holes For Ganging Hardware Pass Through (Joins Racks)



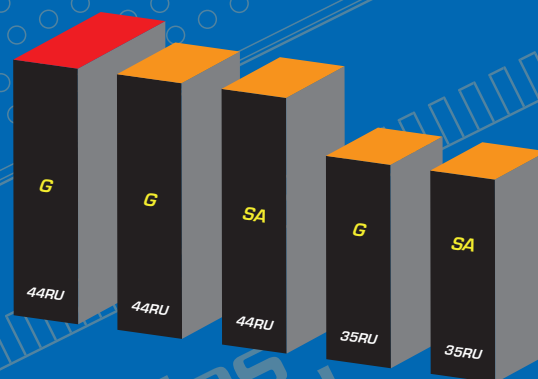
FMA44-25SA

FMA35-25SA	FMA44-25SA	FMA35-25G	FMA44-25G	FMA44-36G	Accessory	Description
◆		◆			PFD35	PFD Series 1" Deep Plexiglas Steel Front Door
	◆		◆	◆	PFD44	
◆		◆			SFD35	SFD Series 1" Deep Solid Steel Front Door
	◆		◆	◆	SFD44	
◆		◆			MPFD35	MPFD Series 1" Deep Perforated Steel Front Door
	◆		◆	◆	MPFD44	
◆		◆			MPFD35-3	MPFD-3 Series 3" Deep Perforated Steel Front Door
◆	◆	◆	◆		TPS-25	Top Opening Solutions TPS Series - Solid Panels TPP Series - Perforated Panels EFT Series - Top Opening Fan Panels
				◆	TPS-36	
◆	◆	◆	◆		TPP-25	
				◆	TPP-36	
◆	◆	◆	◆		EFT-25	
				◆	EFT-36	
					FMA35-25LRPV	Optional Vented Side Panels
			◆		FMA44-25LRPV	
				◆	FMA44-36LRPV	
◆	◆	◆	◆		FMARTK25	Roller Cart / Caster Kits
				◆	FMARTK36	
◆		◆			FMA-RR35	FMA-RR Series Additional Rack Rails
	◆		◆	◆	FMA-RR44	

Floor Racks

The Atlas Sound Folded Metal Assembly design incorporates an innovative "Radius" look characterized by sleek corners and seamless joints. This new look blends effortlessly in today's ergonomically designed office environment. A wider footprint of over 24" offers installers the luxury of more available working space, particularly valuable in wire management applications where space is often inherently limited.

The Atlas Sound FMA Series features completely redesigned "hat" sections for added strength & greater versatility in rack rail positioning. The hat sections include a rack rail slot along with holes spaced the entire length of the hat section to allow for easy, secure positioning of the rack rails. This newly designed hat section is also spaced in the cabinet to allow the installation of standard 19" blank panels vertically inside the cabinet. This is perfect for "stick-on" type accessories like Atlas Sound DC power supplies & relays. Hat sections also feature slotted cut-outs for clean, organized wire management.



36" Depth 25 1/2" Depth
SA = Stand Alone G = Gangable

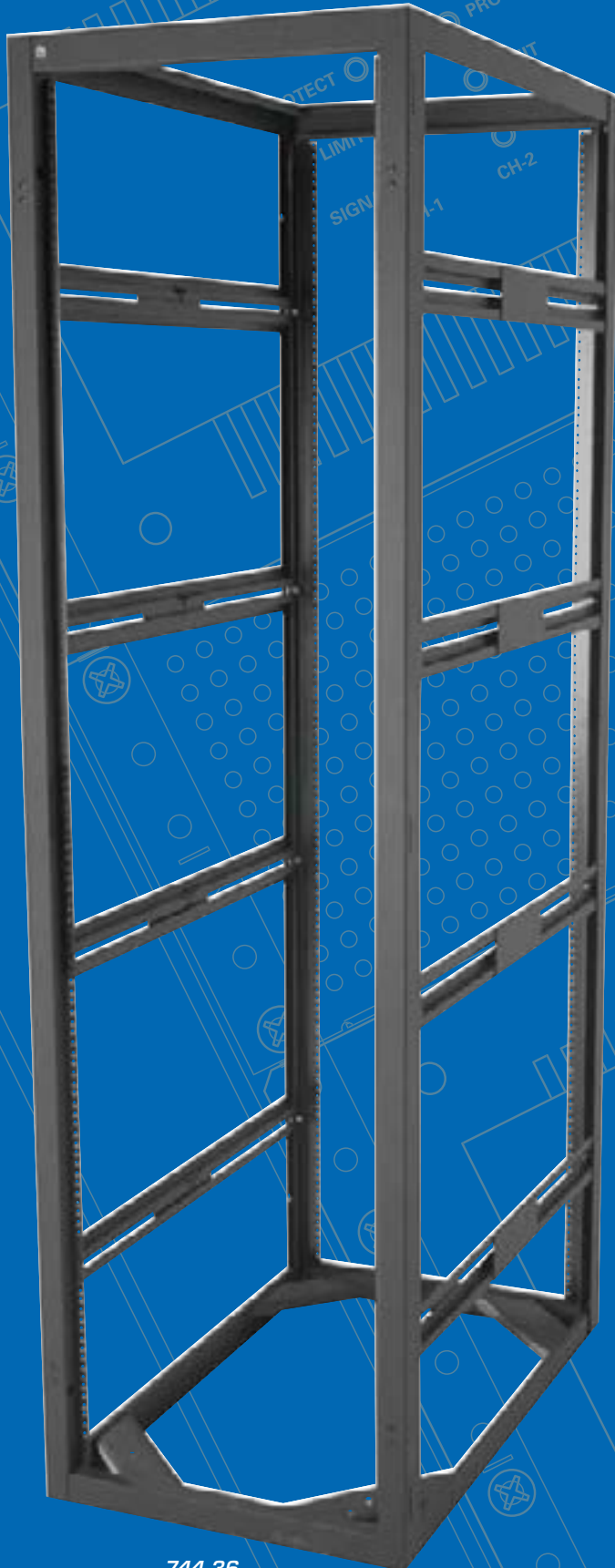
700 Series

Common Features

- Choice of 25½", 30" or 36" Depths
- Welded, 14-gauge CRS Frame With Vented Top Panel, Base and Rear Door
- Optional, Locking Rear Door with Spring Hinges, Flush Lock and Pull, and Right or Left-Hand Hinging Option
- Optional Surface-Mount Front Door in Choice of Solid Steel, Perforated, or Plexiglas (Right or Left-Hand Hinging)
- Easily Adjustable, 12-gauge, Front-to-Rear Tapped Mounting Rails
- Slotted Mounting Rail Supports are E.I.A. Spaced for Vertical Mounting of 19" Accessories
- Increased Panel Space Opening in Top and Bottom Provides Multiple Panel Options and Wire / Cable Access
- UL Listed (Standard 1678)

Sturdy welded racks feature 14-gauge CRS welded frames in 25½" depth (35, 40, & 44RU), 30" depth (44RU) or 36" depths (44RU). Designed with open sides for easy wiring access in single or multi-bay configurations. CRS corner gussets with four integral ¾"-16 thread sockets facilitate leg levelers (included) and optional RCK-700 casters. Includes one pair of 12-gauge CRS adjustable mounting rails tapped 10-32; 30" & 36" depth series include two pair of rails.

Wire management and ventilation features include maximum cabling and cooling opportunities via a standard panel width opening in the cabinet top and bottom. The panel opening may be covered with standard panels, the ISOPANEL (a non-conductive polymer panel to facilitate isolation of the rack from the building's electrical system), or EFT Series exhaust fans. **Mounting rail supports have slotted holes to adjust rail depth and provide open cable raceways.** Supports are also on 19" panel spacing to accommodate vertical accessory mounting. Punched vents located at the cabinet top and bottom front edge may be covered with standard panels for thermal management.



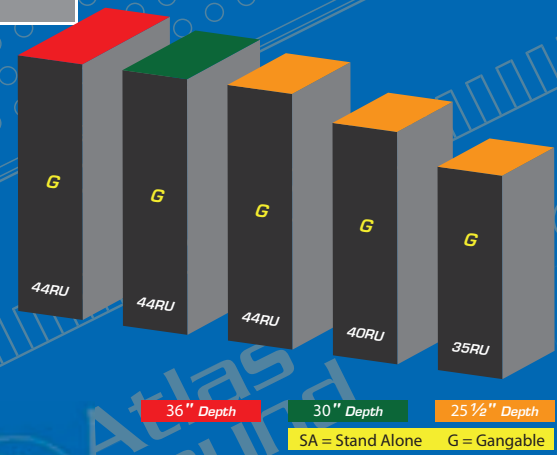
744-36

735-25	740-25	744-25	744-30	744-36	Accessory	Description
◆					PFD35	PFD Series 1" Deep Plexiglas Steel Front Door
	◆				PDF40	
		◆	◆	◆	PFD44	
◆					SFD35	SFD Series 1" Deep Solid Steel Front Door
	◆				SFD40	
		◆	◆	◆	SFD44	
◆					MPFD35	MPFD Series 1" Deep Perforated Steel Front Door
	◆				MPFD40	
		◆	◆	◆	MPFD44	
◆					MPFD35-3	MPFD-3 Series 3" Deep Perforated Steel Front Door
◆					FRD35	FRD Series Optional Flush Rear Doors
	◆				FRD40	
		◆	◆	◆	FRD44	
◆	◆	◆			TPS-25	Top Opening Solutions TPS Series - Solid Panels TPP Series - Perforated Panels EFT Series - Top Opening Fan Panels
			◆		TPS-30	
				◆	TPS-36	
◆	◆	◆			TPP-25	
			◆		TPP-30	
				◆	TPP-36	
◆	◆	◆			EFT-25	
			◆		EFT-30	
				◆	EFT-36	
◆					SPS35-25	Optional Vented Side Panels
	◆				SPS40-25	
		◆			SPS44-25	
			◆		SPS44-30	
				◆	SPS44-36	
◆	◆	◆	◆	◆	RCK-700	Roller Cart / Caster Kits
◆					RR35	FMA-RR Series Additional Rack Rails
	◆				RR40	
		◆			RR44	

Floor Racks

Did You Know...

The UL Listed (UL 1678) 700 Series Racks are now seismic certified in accordance to the Telcordia NEBS (Network Equipment Building Systems) GR-63-CORE standard. When the SBK-700 brackets are properly installed, the 700 Series successfully endured the rigorous real-world dynamic test - the racks are able to withstand up to a zone 4 earthquake which is comparable to Richter magnitude 8.0!



500 Series

Common Features

- Choice of 25½" or 30" Depths
- Welded, 16-gauge CRS Frame With Vented Top Panel, Base and Rear Door
- Removable, Locking Rear Door with Spring Hinges, Flush Lock and Pull, and Right or Left-Hand Hinging Option
- Optional Surface-Mount Front Door in Choice of Solid Steel, Perforated, or Plexiglas (Right or Left-Hand Hinging)
- Easily Adjustable, 12-gauge, Front-to-Rear Tapped Mounting Rails
- Slotted Mounting Rail Supports Facilitate Vertical Wire Management and are E.I.A.-Spaced for Vertical Mounting of 19" Accessories
- Panel Space Opening in Top and Bottom Provides Ample Wire/Cable Access
- 18 Conduit Knockouts (Standard & Concentric)
- UL Listed (Standard 1678)

Sturdy welded racks feature 16-gauge CRS welded frames in 25½" or 30" depths, standard panel space heights and 19" widths. **Designed with open sides for easy wiring access in single or multi-bay configurations. Racks offer sturdy construction, quality wire management, ventilation, and styling.** 25" depth series provides 24¼" of usable depth, and 30" depth series has 28¾" of usable depth. The 500 Series is UL-listed and ships with a flush-mounting, removable rear door (right or left-hand hinging) with lock, and adjustable mounting rails. Series includes one pair of 12-gauge CRS adjustable mounting rails tapped 10-32; 30" depth series includes two pair of rails.

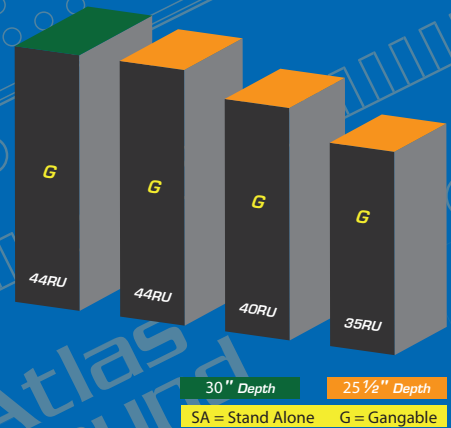
Wire management and ventilation features include maximum cabling and cooling opportunities via a standard panel width opening in the cabinet top and bottom. The panel opening may be covered with a standard blank panel, the ISOPANEL (a non-conductive polymer panel to facilitate isolation of the rack from the building's electrical system), or exhaust fan Model EFT6-4. Mounting rail supports have slotted holes to adjust rail depth and provide open cable raceways. Supports are also on 19" panel spacing to accommodate vertical accessory mounting. Punched vents located at the cabinet top and bottom front edge may be covered with standard panels to control air handling.



544-25

535-25	540-25	544-25	544-30	Accessory	Description
◆				PFD35	PFD Series 1" Deep Plexiglas Steel Front Door
	◆			PDF40	
		◆	◆	PFD44	
◆				SFD35	SFD Series 1" Deep Solid Steel Front Door
	◆			SFD40	
		◆	◆	SFD44	
◆				MPFD35	MPFD Series 1" Deep Perforated Steel Front Door
	◆			MPFD40	
		◆	◆	MPFD44	
◆				MPFD35-3	MPFD-3 Series 3" Deep Perforated Steel Front Door
◆	◆	◆	◆	SPR6	Top Opening Solutions SPR6 - 6RU Solid Panel PPR6 - 6RU Perforated Panel EFT6-4 - 6RU Fan Panel
◆	◆	◆	◆	PPR6	
◆	◆	◆	◆	EFT6-4	
◆	◆	◆		RCK-25	Caster Kits
			◆	RCK-30	
◆				SPS35-25	Optional Vented Side Panels
	◆			SPS40-25	
		◆		SPS44-25	
			◆	SPS44-30	
◆				RR35	RR Series Additional Rack Rails
	◆			RR40	
		◆	◆	RR44	

Floor Racks



200 Series

Common Features

- Extensive Wire Management Capabilities
- Five Model Heights
- Rear Door Offers Right or Left-Hand Hinging Capability
- Increased Panel Opening in Cabinet Base and Top Offers Wiring Convenience
- Manufactured to E.I.A. Standards
- Includes Perforated Vents, Front/Rear & Sides
- Ideal for Telecommunications, Broadcasting, Manufacturing, Testing Research, Educational and Institutional Applications
- UL Listed (UL 1678)

Basic Rack Includes

- Base, Top Panel, Side Panels, & Rear Door
- 16-gauge CRS Construction
- Vented Top, Base, Sides and Rear Door with Lock
- One Pair of 11-gauge, CRS Adjustable Mounting Rails
- 18 Conduit Knockouts and 2 Wire-Access Panels

These standard racks are available in 3 depths: 18½", 25½", and 30". Racks are 22¾" wide, and available in five vertical panel space heights. The 200 Series are completely welded and ready for equipment installation. All models are constructed of heavy 16-gauge CRS and include base, top panel, side panels, mounting rails, and rear door. Rear doors are furnished with quick-release spring hinges which allow them to be rotated 180° for right or left-hand opening. Cylinder locks and flush door pulls (handles) accompany rear door assemblies.

The 200 Series cabinet line offers several installer-friendly advantages, including a standard panel width opening in the cabinet top which can be left open for wire access and/or ventilation, or closed using standard panels.

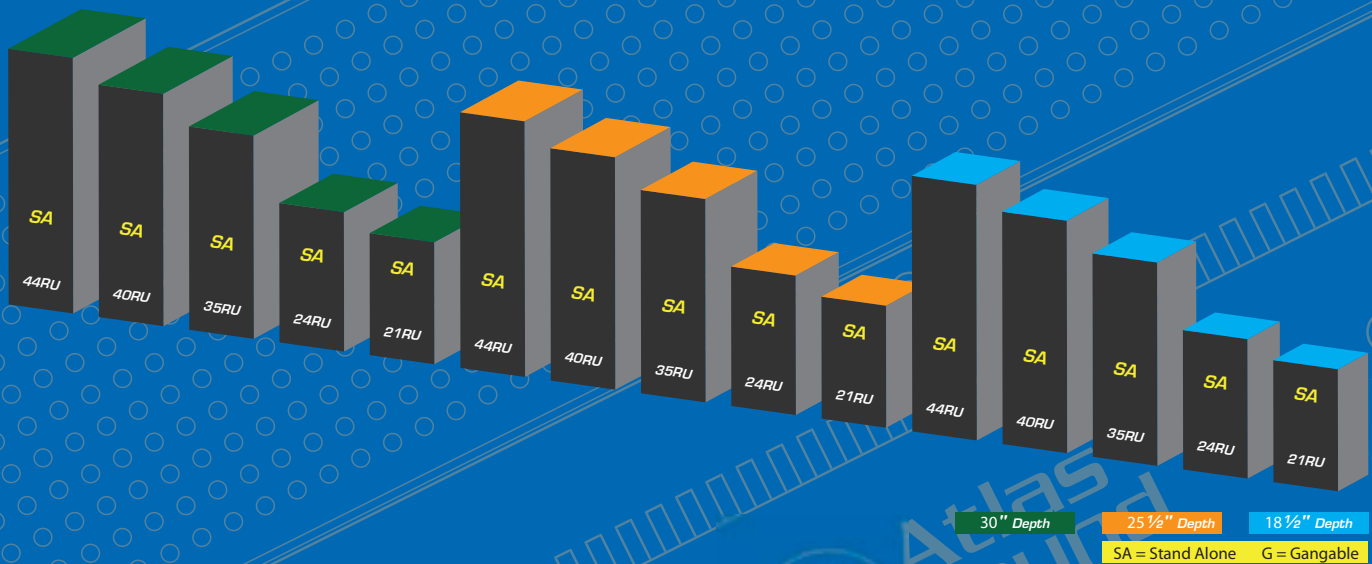
Conduit arrays are located on the top and bottom surface panels, as well as the top and bottom back flanges.

Stamped perforated vents are located on all sides as well as on the rear door to allow for maximum air convection. Internal vents reduce side-by-side stacking problems in multi-bay configurations.



244-18

221-18	224-18	235-18	240-18	244-18	221-25	224-25	235-25	240-25	244-25	221-30	224-30	235-30	240-30	244-30	Accessory	Description
◆					◆					◆					PFD21	PFD Series 1" Deep Plexiglas Steel Front Door
	◆					◆					◆				PFD24	
		◆					◆					◆			PFD35	
			◆					◆					◆		PFD40	
				◆					◆					◆	PFD44	
◆					◆					◆					SFD21	SFD Series 1" Deep Solid Steel Front Door
	◆					◆					◆				SFD24	
		◆					◆					◆			SFD35	
			◆					◆					◆		SFD40	
				◆					◆					◆	SFD44	
◆					◆					◆					MPFD21	MPFD Series 1" Deep Perforated Steel Front Door
	◆					◆					◆				MPFD24	
		◆					◆					◆			MPFD35	
			◆					◆					◆		MPFD40	
				◆					◆					◆	MPFD44	
	◆					◆					◆				MPFD24-3	MPFD-3 Series 3" Deep Perforated Steel Front Door
		◆					◆					◆			MPFD35-3	
◆	◆	◆	◆	◆	◆	◆	◆	◆	◆	◆	◆	◆	◆	◆	SPR6	6RU, Solid Recessed Panel
◆	◆	◆	◆	◆	◆	◆	◆	◆	◆	◆	◆	◆	◆	◆	PPR6	6RU, Perforated Panel
◆	◆	◆	◆	◆	◆	◆	◆	◆	◆	◆	◆	◆	◆	◆	EFT6-4	6RU, 4 Fan Panel
◆	◆	◆	◆	◆											CT1020-962	Roller Cart / Caster Kits
					◆	◆	◆	◆	◆						RCK-25	
										◆	◆	◆	◆	◆	RCK-30	
◆					◆					◆					RR21	RR Series Additional Rack Rails
	◆					◆					◆				RR24	
		◆					◆					◆			RR35	
			◆					◆					◆		RR40	
				◆					◆					◆	RR44	



100 Series

Common Features

- Extensive Wire Management Capabilities
- Five Model Heights
- Rear Door Offers Right or Left-Hand Hinging Capability
- Standard 6RU (5¼") Panel Opening in Cabinet Base and Top Offers Wiring Convenience
- Manufactured to E.I.A. Standards
- Includes Perforated Vents
- Ideal for Telecommunications, Broadcasting, Manufacturing, Testing, Research, Educational and Institutional Application

Basic Rack Includes

- Base, Top Panel, Side Panels, & Rear Door
- 16-gauge CRS Construction
- Vented Top, Base, Sides and Rear Door
- One Pair of 11-gauge, CRS Fixed Mounting Rails
- Removable Rear Door with Lock
- 18 Conduit Knockouts and 2 Wire-Access Panels

These industry-standard utility cabinets are engineered for ample ventilation and wire management. They are complete with base, top panel, vented side panels, vented rear door with lock, one pair of fixed rails, mounting screws, and hardware. The rear door is removable and may be hung for right or left-hand hinging. The 100 Series is welded and UL listed (Standard 1678) and feature vents in the cabinet top and bottom front edge. Top and bottom panel opening may be left open for access and ventilation or covered using standard panels, EFT6-4 fan panel, or ISOPANEL.

The 100 Series will not accept rear rack rails.



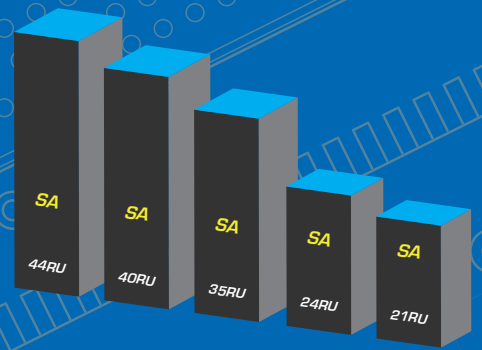
144-18





121-18	124-18	135-18	140-18	144-18	Accessory	Description
◆					PFD21	PFD Series 1" Deep Plexiglas Steel Front Door
	◆				PFD24	
		◆			PFD35	
			◆		PDF40	
				◆	PFD44	
◆					SFD21	SFD Series 1" Deep Solid Steel Front Door
	◆				SFD24	
		◆			SFD35	
			◆		SFD40	
				◆	SFD44	
◆					MPFD21	MPFD Series 1" Deep Perforated Steel Front Door
	◆				MPFD24	
		◆			MPFD35	
			◆		MPFD40	
				◆	MPFD44	
	◆				MPFD24-3	MPFD-3 Series 3" Deep Perforated Steel Front Door
		◆			MPFD35-3	
◆	◆	◆	◆	◆	SPR6	Top Opening Solutions SPR6 - 6RU Solid Panel PPR6 - 6RU Perforated Panel EFT6-4 - 6RU Fan Panel
◆	◆	◆	◆	◆	PPR6	
◆	◆	◆	◆	◆	EFT6-4	
◆	◆	◆	◆	◆	CT1020-962	Roller Cart

Floor Racks



18 1/2" Depth

SA = Stand Alone G = Gangable

WMA Series Wall Racks

Common Features

- New, Secure and Innovative Design Greatly Simplifies Process of Mounting Center Section to Rear Panel May be Safely Installed by One Person
- Mirror Image Back Pan Allows Left or Right Hinging of Center Section Regardless of Orientation
- Exclusive, Integral Atlas Sound "Alignment Frame" Provides Support Throughout the Complete Travel of the Center Section
- Back Pan Now Boxed Separately on Same Pallet with Center Section Allows Contractor to Send Rear Section to Job Site for Installation by Other Trades
- Top and Bottom Cutouts for Atlas Sound ES Series Single or Dual Fan Panels (Ships With 3RU Blank Panels Installed)
- Finished in Durable Black Electrostatic Powder Coat
- 12½" x 12½" Cut-Out on Back Pan Allows Easy Cable Access Through Mounting Surface
- New, Continuous Slot "Hat Section" Design Allows Full Front to Back Adjustment of Rack Rails. Securing Holes Top and Bottom Provide Fixed Positioning of Rails
- Ships With One Set of Plated Rack Rails and (100) 10-32 x ¾" Rack Screws with Captive Washers
- Rails Include Hash Marks to Indicate Rack Unit Increments
- New Side Lock Security System Provides an Easy Yet Secure Method of Joining Center Section to Back Pan
- Extensive Internal Bracing Also Provides Cable Management / Pass Through
- Multiple Knockouts Top and Bottom of Rear Section for Conduit & Wireless Antennas
- Back Pan Includes Raised Mounting Embosses to Mount Power and Other Accessories

The Atlas Sound WMA Series (Wall Mount Assembly) of wall racks provide outstanding versatility, strength and functionality all in an elegantly designed package.

Designed with extensive field research and contractor input, the WMA Series is the perfect solution for any installation where a wall mount cabinet is required.



WMA16-23

WMA10-23	WMA12-23	WMA16-23	WMA24-23	WMA35-23	Accessory	Description
◆					PFD10	1" Deep Plexiglas Steel Front Door
	◆				PFD12	
		◆			PFD16	
			◆		PFD24	
				◆	PFD35	1" Deep Solid Steel Front Door
◆					SFD10	
	◆				SFD12	
		◆			SFD16	
			◆		SFD24	1" Deep Perforated Steel Front Door
				◆	SFD35	
◆					MPFD10	
	◆				MPFD12	
		◆			MPFD16	3" Deep Perforated Steel Front Door
			◆		MPFD24	
				◆	MPFD35	
◆					MPFD10-3	
	◆				MPFD12-3	Top Opening Solutions SPR6 - 6RU Solid Panel PPR6 - 6RU Perforated Panel EFP3-1 - 3RU, 1 Fan Panel EFP3-2 - 3RU, 2 Fan Panel
		◆			MPFD16-3	
			◆		MPFD24-3	
				◆	MPFD35-3	
◆	◆	◆	◆	◆	SPR3	WMA-RR Series Additional Rack Rails
◆	◆	◆	◆	◆	PPR3	
◆	◆	◆	◆	◆	EFP3-1	
◆	◆	◆	◆	◆	EFP3-2	
◆					WMA-RR10	
	◆				WMA-RR12	
		◆			WMA-RR16	
			◆		WMA-RR24	
				◆	WMA-RR35	



300 Series Wall Racks

Common Features

- Sturdy Wall-Mount Cabinet Protects Equipment and Saves Valuable Floor Space
- Selection Includes Models With 12" and 15", Deep Center Mounting Sections
- Reinforced Frame Flanges, Plus Corner-Brace Structural Supports And Electric-Welded Seams & Miters Provide Stability For Mounted Equipment
- Punched Vents Assure Heat Dissipation
- Wire Management Provisions Allow Organized Wire Access
- Adjustable Mounting Rails Provide Flexibility
- Includes Solid Front Door

These pre-assembled sectional wall-mount cabinets feature right or left hinging capability and offer full functional and mechanical flexibility for mounting standard 19" wide rack equipment. Cabinets have been engineered to offer increased mounting, wiring and structural capabilities. The 300 Series offer center section depths of 12" and 15", respectively; and rear mounting section depth of 4½". The 300 Series models are used to protect electronic switching, monitoring, lighting, sound and communications controls in venues such as: school auditoriums, health care facilities, clubs, factories, warehouses, public areas, and recreation areas.

Structural and mounting features include: 16-gauge CRS construction throughout; one-piece front and rear sections strengthened with frame flanges on bottom, top and sides,

center section with corner-brace structural supports, a center section guide plate, electric-welded seams and miters, punched vents for heat dissipation and 11-gauge adjustable front-to-rear mounting rails. The center section mounting rail supports also have slotted cutouts, to easily adjust rail depth and provide open raceways for containing vertically run wire and cable. Corner brace supports, which straddle the back and side panel of the rear section (hinge-side), also feature round wire access holes for harnessing excess wire. All 300 Series have 20 conduit knockouts, except 307-12 which has 16. Provisions have been added to facilitate contractor installation of plywood for mounting accessories to inside of rear section if desired. Rear section also includes removable pin-type hinges allowing it to be installed separately in a surface or recessed manner.

307-12	310-12	312-12	316-12	324-12	310-15	312-15	316-15	324-15	335-15	Accessory	Description
◆	◆	◆	◆	◆	◆	◆	◆	◆	◆	CT31A	Optional Support Wheel
	◆				◆					RR310	RR3 Series
		◆				◆				RR312	Additional Rack Rails
			◆				◆			RR316	
				◆				◆		RR324	
									◆	RR335	



RX14-25SFD

RX21-25SFD

RX Series Portable Racks

Cabinets with Casters & Side Handles for Mobile Use

RX Series. Sturdy mobile equipment cabinets have been re-designed to offer increased mounting-depth and improved wire-management capabilities in an easily transportable protective cabinet. Construction is similar to the 200 Series with the addition of four, pre-installed 4" casters (two locking) and recessed and hinged, rubber-padded steel grips on each side. RX Series models feature three wire access / isolation holes in the bottom of the rear panel and a solid base. Cabinet features a 16-gauge CRS welded frame, adjustable, front-to-rear mounting rail supports with slotted cut-outs for vertical wire management, perforated vents on side panels and rear door, a 600 lbs (272 kg) load capacity and locking rear door. 25" & 30" deep versions are available either with factory installed solid front door or without door to allow use of standard perforated or Plexiglas doors.



407-15

Welded & Assembled Desk Top Cabinets

400 Series

Welded assemblies provide desk-top access to (19") control and monitor equipment. Models are 16-gauge CRS and include one pair of mounting rails, tapped 10-32, hardware and wiring access below rear door or panel. Models 407-15 through 418-15 include locking rear door with spring-loaded hinge, side vents and optional front door with self-tapping screws. Inside (usable) dimensions are 17 $\frac{3}{4}$ " Width x 14 $\frac{1}{8}$ " Depth (451mm x 359mm).



607-15

Wall-Mount Enclosure For 19" Equipment

607-15. Compact 16-gauge CRS assembly with 7RU (12 $\frac{3}{8}$ ") vertical panel space is ideal for housing and protecting small 19" equipment installations from public view. It includes above listed features with locking front door and inside (usable) dimensions. It includes convenient pre-punched back panel for wall mounting, locking front door, and vents on each side. Inside (usable) depth is 14" (356mm).



RKW12-180

RKW Series

- 5/8" High Grade MDF Veneer Construction
- Low Gloss Finish
- 18" Depth to Conceal Longer Amplifiers and Other Rack Mount Equipment
- 12RU and 16RU Heights "Under Desk or Under Counter" Applications
- Furniture Quality Fit and Finish
- One Pair of 11-gauge Rack Rails Included

The new RKW Series of racks from Atlas Sound provide a great way to secure rack mount AV components in boardrooms, classrooms, and other applications. The simple knock down design allows for easy storage and transportation to the job site. Assembly is a snap with a furniture style cam lock system. One pair of 11-gauge rack rails provides support for up to 250 lbs (113.39 kg) of rack mount equipment.

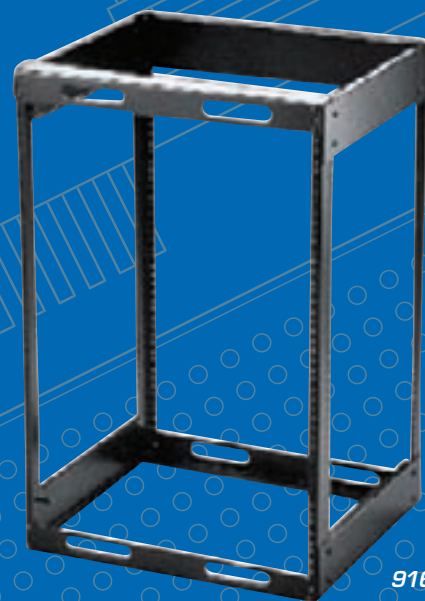


AWR3W

Tilt-Out Wall Cabinets for 19" Equipment

AWR Series

Convenient access and lock-in security highlights Atlas Sound's re-designed 2RU (3½") / AWR2W and 3RU (5¼") / AWR3W tilt-out wall cabinets for 19" equipment. These re-designed welded models can be surface or recessed mounted (trim ring included) and include a 3RU panel opening above the main bay for connector panels or power distribution with a usable depth of 4" for the AWR2W and 5¾" for the AWR3W. **These cabinets are perfect for mounting remote amplifiers and control equipment.** The series features a 16-gauge CRS formed door frame with a 16-gauge CRS locking tilt-out door which closes against rack face plate. The surface mounting door is attached to the frame internally with 2 pin style hinges to prevent tampering. Doors can be opened to two positions—tilt-out for operation and by releasing side catches, the door will open to approximately 90° for equipment installation and maintenance. Units are furnished with two steel safety catch cables which suspend and hold doors at 90°. Front panels have 45° mitered edges to present a clean flush appearance. Back box is 16-gauge CRS equipped with six concentric knockouts of ½" and ¾". **AWR Series is shipped complete and ready for installation.** Panel mounting holes accept 10-32 hardware. The Top mostRU useable depth is 20" (50.8cm), the bottomRU useable depth is 17¼" (43.81cm).

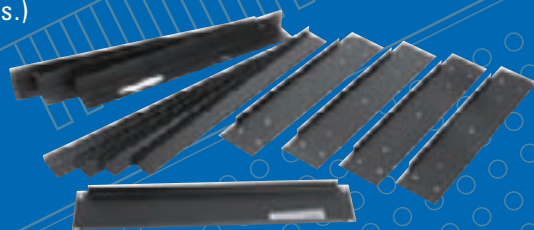


916-18

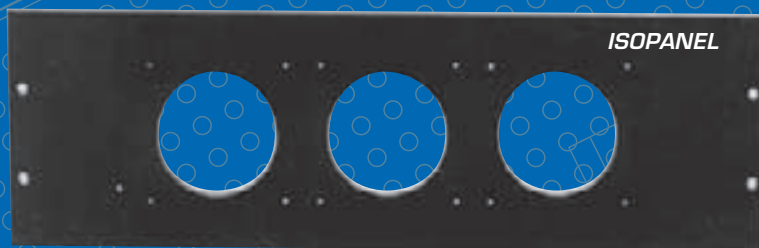
Easy-to-Assemble, Stackable Utility Frames

900 Series

Versatile frames are engineered for ease of assembly, strength, and economical shipping/storage. Innovative units assemble and stack easily for mounting electronics in custom cabinet enclosures or free-standing situations. They are ideal for theater, residential, broadcast, and retail applications where easy access to equipment mounted "behind the scenes" is desired. **This frame-only design allows full use of all vertical panel space for equipment mounting and is intended for permanent installation where doors, side panels, and casters are not required.** (Custom side panels may be added). The 900 Series frames are offered in 19¼" and 26¼" panel space heights. Model 912-18 is 23¾" tall and offers 11RU of vertical panel space. All four rails are tapped. Model 916-18 is 30" tall and offers 15RU of vertical panel space. (Us0 and 16RU, respectively, with removal of the optional top horizontal member.) All models can be stacked and ganged in the combinations outlined on page xx. The vertical stacking process is easily accomplished—simply stack the rail members and join them using the front-to-rear members as splice plates. (All necessary hardware is furnished.) Units can also be joined "side-by-side" using the predrilled holes in the front-to-rear frame members and owner-supplied hardware. (These pre-drilled holes can also be used to mount custom side panels.)

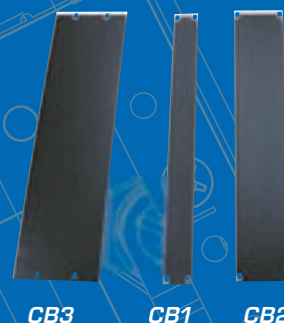


900 Series Unassembled



Isolation Panel

The ISOPANEL™ has three pre-cut openings to accommodate standard 2½" conduit couplings. This allows conduit to be brought into the rack without touching the metal frame. Additional screw holes, which facilitate #8 sheet metal screws are provided for mounting standard 4 square electrical covers over each 2½" hole for custom application. Textured polymer material can be worked with common hand tools facilitating field modification. The ISOPANEL™ is an over-sized panel measuring 19" wide x 6" height (outside dimension).



CB3

CB1

CB2

Solid & Perforated Panels

Choose from a variety of panels to enclose unfilled space and to provide aesthetic continuity and security in 19" electronic equipment cabinets. Solid & perforated models offer dust protection and heat ventilation. All models include oblong mounting holes on EIA universal spacing for adjustment flexibility.

SEC Series Security Covers

Designed to eliminate unauthorized operator tampering to rack mount equipment such as equalizers and rack mount mixers. These 22-gauge construction covers feature fine perforated steel insert for good visibility. Unique radiused corners provide a professional looking installation. Formed edges protect equipment from scratches. Available in 1RU, 2RU, & 3RU heights.

CB Series

Economy solid steel panels are constructed of 14-gauge steel finished in attractive -052 flat black electrostatic powdercoat. Available in 1RU, 2RU, 3RU, & 4RU Heights. 1RU Model, CB1, also available in a 12 piece Bulk Pack, CB1-BP12.

SPR / SPF Series (UL 1678)

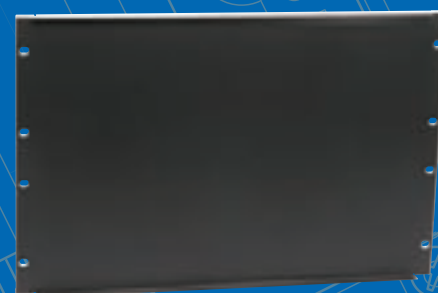
Solid 16-gauge CRS blank panels are available in a selection of recessed and flush mounting models. SPR Series has formed returns on panel top and bottom for recessed installation. SPF Series are formed on all four sides to exhibit a flush-to-frame appearance. Recessed available in 1RU to 8RU heights. Flush available in 2RU.

TPS / TPP Series

Top panels for FMA Series & 700 Series. Available as solid (TPS Series) and perforated (TPP Series). Available in 12RU, 14RU, & 18RU heights for 25½", 30", & 36" depth racks, respectively.

PPR / PPF Series (UL 1678)

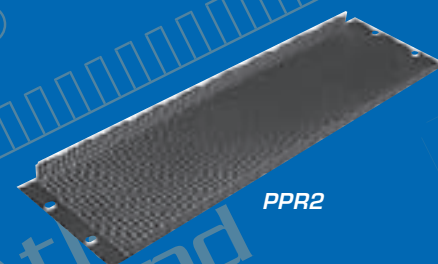
Perforated 22-gauge CRS vent panels provide for natural air circulation and dissipation of equipment generated heat. PPR Series is formed on panel top and bottom for recessed installation. PPF Series is formed on four sides to achieve a flush-to-frame appearance. Recessed available in 1RU to 8RU heights. Flush available in 2RU.



SPR7



TPS25



PPR2



SD2-14

SD Series - Recessed Storage Drawers

Perfect for storage of discs, microphones, tools, and accessory items in fixed or portable racks. 16-gauge CRS drawers mount into 19" cabinets and ship complete with high impact plastic pull handles and steel ball bearing rollers. Drawer hanger assembly is inverted to prevent contents from spilling if cabinet is tilted. Slots are included in the hanger assembly to allow use of SH Series rear support brackets for additional stability in mobile applications. Optional SD-LOCK may be installed for additional security (discrete hole plug fills cut-out if lock is not required). Overall drawer depth is 14 $\frac{3}{4}$ ". Models available in 2, 3, 4, & 6RU heights.



CD4

CD4 - Media Storage Shelves

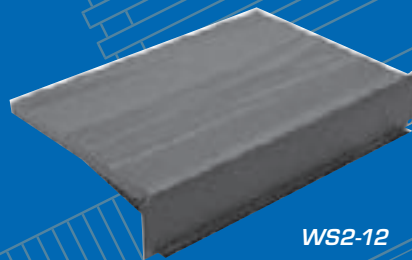
Convenient CD media storage shelf features slot dividers for increased strength. Construction is of 16-gauge cold rolled steel finished in black textured electrostatic powder coat (-052). Unit holds 40 standard CD jewel cases.



SH1-10

Vented One-Piece All-Purpose Shelf

Versatile formed shelving is 16-gauge CRS and includes mounting holes on E.I.A. standard spacing. Finished in black textured finish. Unit is secured using a single pair of front mounting rails. No assembly is required.

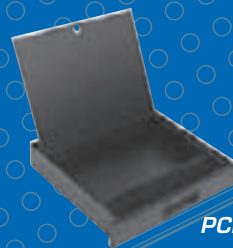


WS2-12

Economical Exterior Shelf / Writing Surface

WS2-12

Cost-effective shelf attaches to front mounting rails of 19" cabinets for application as an exterior component mounting shelf or writing surface. Shelf is wood grain formica-covered particle board supported by 16-gauge CRS spot-welded brackets. Brackets are a -052 Flat Black finish. Use standard panel mounting hardware (not supplied).

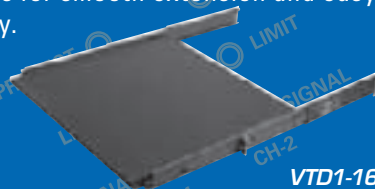


PCD3-16-052

Pencil Drawer

PCD3-16-052

Dual-function sliding pencil drawer features a handy storage area covered by a lift-up writing surface. Unit is constructed of 18-gauge CRS and mounts in most 19" rack or cabinet. Hinged writing surface is 16 $\frac{5}{16}$ " wide particle board covered with wood grain laminate. Drawer slides include hold-in detents and 100lbs (45 kg) rated steel ball bearings for smooth extension and easy content accessibility.

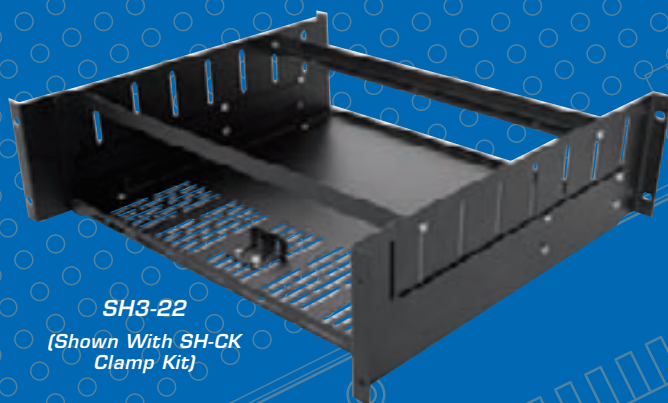


VTD1-16

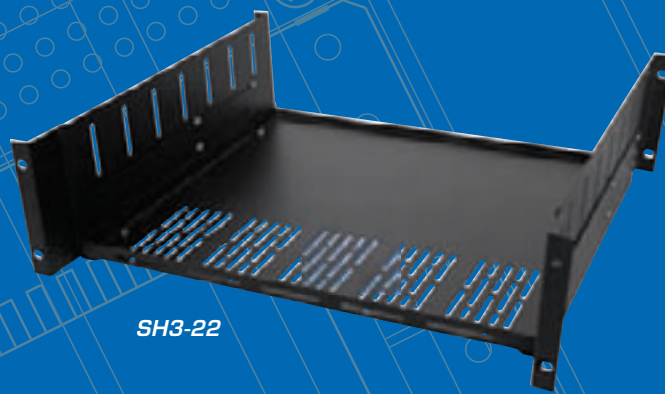
Sliding Shelf / Tray for Cabinets with Front & Rear Rails

VTD1-16

Versatile shelf provides easy access to keyboards, video tape recorders and control equipment. Solid bearing slides extend to a full 17" (432mm) outside of cabinet rails with lock-out protection. Dual-purpose design may be used right-side up as a shelf or upside-down as a tray with a protective lip according to desired application. Model mounts 19" cabinets (18 $\frac{1}{2}$ " to 25 $\frac{1}{2}$ " deep) equipped with front and rear mounting rails. Load bearing capacity is 85lbs (38.5kg). Constructed of 16-gauge CRS and finished in standard black.



SH3-22
(Shown With SH-CK
Clamp Kit)



SH3-22

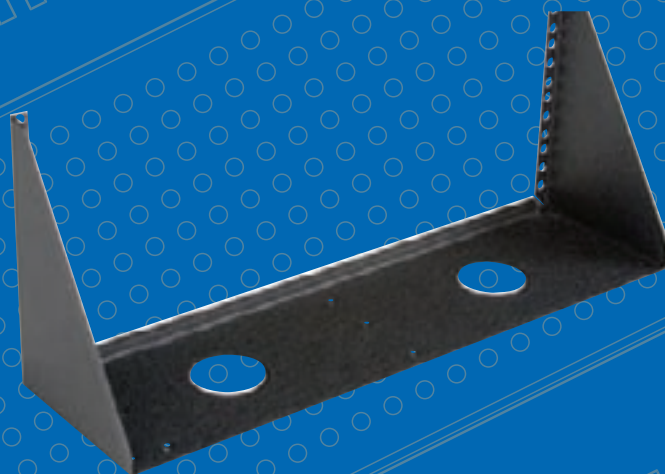
SH Series - Clamping Shelves

Clamping rack shelf systems are designed specifically to secure equipment that is not easily rack mounted, such as VCRs and "prosumer" A/V surround sound receivers into any Atlas Sound wall mount cabinet or vertical rack. SH Series shelves offer a sturdy, side, rear, and top support to ensure that once the equipment is placed on the shelf, it's locked in for the duration. Three Shelves In One – Modular design allows you to choose the right shelf system for each job. The formed construction 16-gauge shelves are offered in three EIA compliant heights (2 RU, 3 RU, and 4 RU), 15" or 22" depths, and come equipped with slots on the sides and bottom for optimum ventilation. For applications where "clamping" brackets are required, specify model SH-CK. The rubber-lined clamps securely hold components from the top. Adjustable "L" brackets are included to provide a secure fit and a component "stop" from the rear. For applications where rear rack rail support is necessary (with or without clamping requirements), add model SHRSB bracket kit.



Universal Monitor Rack Mount Kit

The ASUMRM9 is designed for mounting flat panel displays in Atlas Racks. This 9RU kit is perfect for providing visual feedback for Atlas Sound's ControlKom and Varizone mass communication systems, or other video surveillance systems in need of visual monitoring at the rack. It accommodates any 4:3 display up to 19" diagonally in length, and features a black powder coat finish to match the look of the racks themselves.

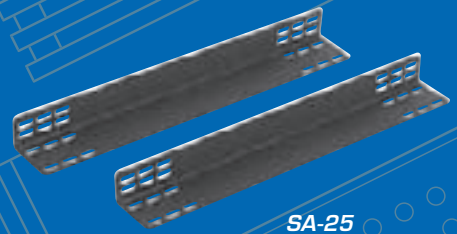


Wall Mount System

The AWV Series is a cost effective wall mount system which allows low profile mounting of Ethernet switches, mixer amplifiers or other rack mount electronics. These bracket style hardware kits are offered in 2, 3, & 4RU configurations and create flush mounting options for equipment – vertically to walls or under desks and work spaces- when space and component needs do not facilitate the need for a full rack.

Support Angle Brackets

SA-25 / SA-30. Use these versatile "L" brackets to support electronic equipment when a solid shelf is not required or when obstructed air circulation is a concern. Brackets span the vertical rails front-to-back to provide additional or initial support for heavy equipment. Model SA-25 mounts in 25½" deep cabinets; Model SA-30 mounts in 30" deep cabinets. Both models are constructed of 11-gauge CRS with slotted cutouts. Finish is standard black.



SA-25



Copper Bus Bars

BBG Series. Functional copper strips are available in six lengths to provide a convenient method of grounding for rack mounted equipment. Bars mount easily to cabinet structure with ¼"-20 hardware (provided). Each bar is ¼" x ¾" wide.

BBG44

Wall-Mount Shelf / Enclosure System

WME150. Extremely versatile six-piece Wall-Mount Shelf / Enclosure System unit is easy to assemble in a variety of configurations (in utility closets and anywhere space is at a premium). The six piece set is shipped flat and can be assembled with common tools. In the two shelf configuration with the supporting side panels, the wall-mount shelf can be used for a wide variety of equipment with a locking door or top. It can be configured as a locking enclosure with two shelves or as a two-shelves-open enclosure, with the two remaining panels used with additional side panels (sold separately) to make a second open shelf unit. Construction is 16-gauge CRS and finished in Neutral White (-592).



WME150-592



WME150-592

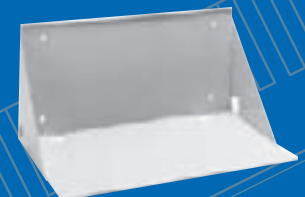
(With Locking Front Door)

Wall-Mount Shelves for 19" Equipment

AS-120 / AS-140. Sturdy shelves with wire access provide for convenient wall-mounting of amplifiers or electronic equipment. AS-120 includes keyhole mounting slots. Versatile AS-140 may be mounted so equipment is installed between side supports or inverted "bookshelf-style" for open equipment placement. Construction is 16-gauge CRS. Finished in Neutral White (-592).



AS-140-592



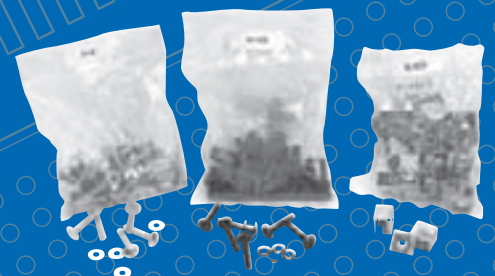
AS-120-592

Touch-Up Paint (4.5 oz Spray)

SP962 – Midnight Black
SP052 – Ebony Black

Rack Screws / Accessories

RSCW100 – 100 Piece Rack 10-32 x ¾" Screw Bag w/ Captive Plastic Washer
RSCW500 – 500 Piece Rack 10-32 x ¾" Screw Bag w/ Captive Plastic Washer
HK-40 – 40 Chrome Rack 10-32 x 1" Screw Bag with Captive Washer
HK-40CN – 40 Piece Clip on Cage Nuts (For FMA Series Top Section ONLY)



Roller Truck & Caster Kit Accessories

RCK-700

Heavy-duty, 2 $\frac{5}{8}$ " diameter non-locking swivel casters have a load-bearing capacity of 255lbs each. Units are zinc-plated and include black, hard-tread wheels.

Model accommodates 700 Series Cabinets only. Sold in groups of four.

CT1020-962

Heavy-duty, welded 16-gauge CRS roller truck provides mobility for 19" width x 18 $\frac{1}{2}$ " depth cabinets. Unit is designed for single-bay use and has one pair rigid and one pair locking 3" swivel casters. Model accommodates 18 $\frac{1}{2}$ " depth 100 Series & 200 Series. Finish is black.

RCK-18

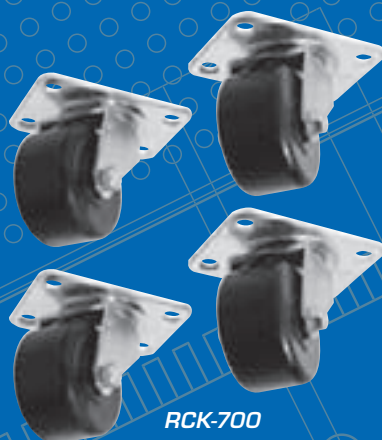
Caster kit provides for caster installation onto 19" width x 18 $\frac{1}{2}$ " depth cabinets in single or multi-bay installations. Kit includes four, non-locking, 2 $\frac{5}{8}$ " diameter casters and two, easy-to-install, 18 $\frac{1}{2}$ " length mounting / supporting brackets. Model accommodates the 18 $\frac{1}{2}$ " depth 100 Series & 200 Series cabinets.

RCK-25

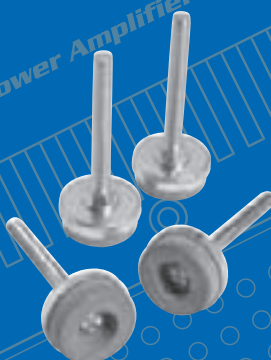
Caster kit provides for caster installation onto 19" width x 25 $\frac{1}{2}$ " depth cabinets in single or multi-bay installations. Kit includes four, non-locking, 2 $\frac{5}{8}$ " diameter casters and two, easy-to-install, 25" length mounting / supporting brackets. Model accommodates the 25 $\frac{1}{2}$ " depth 200 Series and 500 Series cabinets.

RCK-30

Caster kit provides for caster installation onto 19" width x 30" depth cabinets in single or multi-bay installations. Kit includes four, non-locking, 2 $\frac{5}{8}$ " diameter casters and two, easy-to-install, 30" length mounting / supporting brackets. Model accommodates the 30" depth 200 and 500 Series cabinets.



RCK-700

RCK-18
RCK-25
RCK-30

LL2



LR4



LRS

VLS44

RR44

Leg Levelers

LL2

Heavy-duty leg levelers provide stabilization on uneven surfaces for FMA, 700, & 500 Series cabinets. 4-piece sets are steel construction with heavy duty rubber cushion with chrome cap and adjust with standard wrenches.

Horizontal & Vertical Lacing Bars

LRS

Steel lacing bars are a handy 19" EIA horizontal accessory perfect for assisting rack fabricators in executing clean wiring runs inside Atlas Sound racks & cabinets. Sold in a 10 piece bag.

LR4

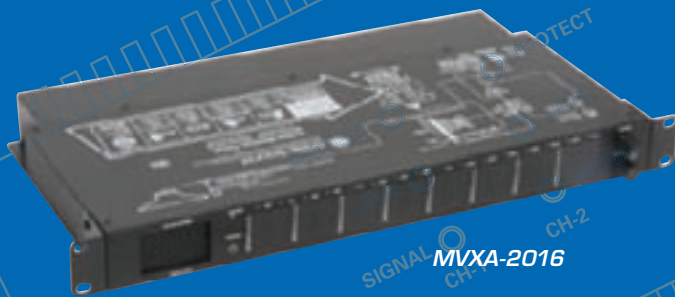
Trapezoidal steel lacing bars with 4" offset provide clean facing in close proximity to rack mount equipment I/O. Sold in a 10 piece bag.

VLS44

Vertical lace bar provides a vertical lace path inside the rack to assure clean wire management. 44RU (77") unit may be cut for use in shorter Atlas Sound racks. Mounting points are provided for attachment to internal rack hat sections. Unit is 2" wide x $\frac{15}{16}$ " thick (50.8mm x 24mm).

Additional Rails

Mounting rails are comprised of 11-gauge CRS and are tapped 10-32 on E.I.A. spacing - $\frac{5}{8}$ " - $\frac{1}{2}$ " continuous centers and finished in black. Rails are sold in pairs and include hardware. All cabinets come with front rails. Order extra rails to provide additional equipment support.



MVXA-2016



MVXA-2016 (Back)

MVXA-2016

Atlas Sound MVXA monitor panel is an active device for aural and visual monitoring, for sixteen different speaker and line level circuits in any combination. Each input is individually selectable using an easy-to-position jumper. The MVXA-2016 offers superior performance with easy visual assessment in an ultra-thin single rack space chassis. Twelve segment LED bar-graphs provide 33dB of resolution and monitor any combination of line level (1V reference) —25V RMS, 70.7V RMS, and 100V RMS simultaneously. The bottom ten LEDs are green and have a VU ballistics response. The two red LEDs at the top of the bar graph are peak to provide instantaneous level indication. LED meter sensitivity is -30dB to +30 dB. **The MVXA-2016 offers the capability to aurally monitor individual channels via an internal speaker, headphone jack, line level output to external amplifier or 3 watt high-fidelity output to an external speaker.** Panel functions include a channel selection knob, channel audible monitoring level control and headphone jacks. External power supply is UL Listed. Unit weight is 7lbs (3.2kg).



MVX-195



MVX-193

19" Monitor Panels

MVX Series

Designed for economical multi-channel system applications that require quality aural and visual monitoring. Models are available with choice of loudspeaker and VU meter for 25V or 70.7V systems. To enable monitoring of up to five program channels, all units include a 6-position, double-pole switch with a positive "Off" position and a volume control for adjusting the level of the monitor loudspeaker. Each monitored circuit connects to two rear-mounted screw terminals. Front panels are 16-gauge CRS, finished in black. Potentiometers and channel selectors are rear mounted with white nomenclature. VU meters are of moving coil design and include type "A" meter scale and protective thermoplastic cover.

Rack Work Light

RWL2

Portable lamp with wide light diffusion provides illumination of interior rack spaces. Supplied with a "non-mar" magnetic mount, 3-wire grounded AC outlet, On/Off switch, high impact clear polycarbonate lens, two 10 watt incandescent lamps (one for replacement) and 6' power cord. Assembly is 18 and 22-gauge CRS. Standard finish is flat black epoxy with galvanized head.



RWL2

Fan Panels for Exhaust Cooling

EFP Series

Flush fan panel assemblies dissipate equipment-generated heat quickly from 19" cabinets. Front/rear and top loading assemblies are available in single and dual fan models with 115 CFM (per fan) fan speed for flush and recessed mounting. Models are complete with fan(s) protected by nickel chrome plated wire grille backed with a steel wire mesh screen assembled to a 16-gauge CRS panel. Panels mount easily to all E.I.A. standard mounting rails and are stocked in standard black finish. Fans are factory-mounted for exhaust cooling and may be rotated easily, in the field, for intake cooling. A 6' line cord is included.



EFP3-1



EFP3-2

Top-Mounting Tube Axial Fan

EFT Series

EFT top-mounting fan panels are powerful cooling assemblies which provide quiet and effective heat dissipation for equipment mounted in 25½" & 30" depth 700 Series & FMA Series cabinets. Space-efficient units require no vertical panel space and deliver 550 CFM with a 4" (100mm) diameter tube axial propeller fan. The EFT Series operates at 115VAC, 60Hz and includes a continuous-duty, shaded-pole type motor, sealed ball bearings, and chrome plated finger guards. Assemblies include an automatic reset thermal protector and 6' line cord with molded plug mounted to a 16-gauge CRS panel finished in standard black.

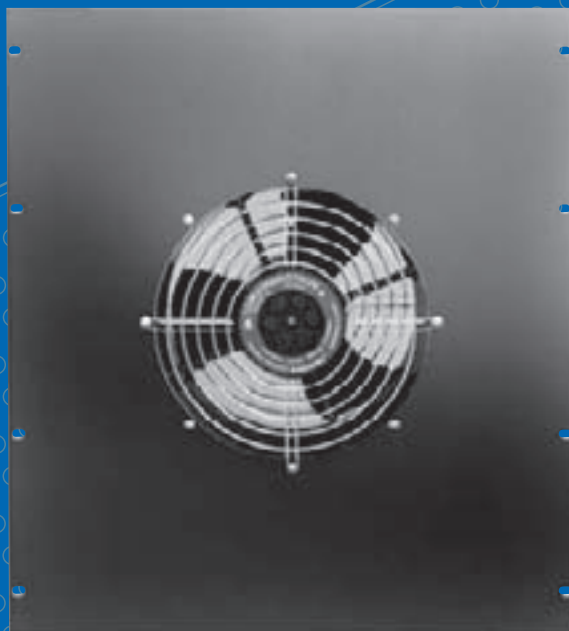
Fan Thermostat

CFT-125

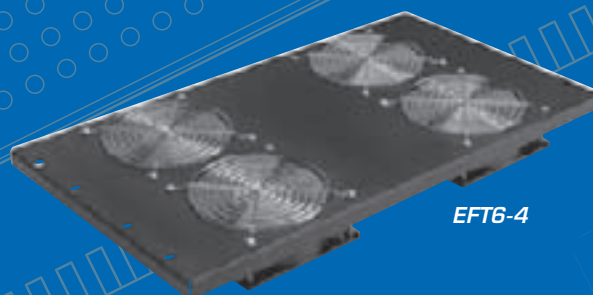
Unit provides ventilation control of fans and other cooling equipment. Thermostat includes an automatic shut-off feature and a special 3-wire extension cord with series plug for automatic operation. Use the thermostat knob to make temperature adjustments at dial settings from 50°F to 100°F. The CFT-125 is UL and CSA-listed.



CFT-125



EFT-25



EFT6-4



MMK17-RM

MMK15-RM ***15" Rack Mount Monitor***

- Meets EIA310c and IEC-3 Specifications
- Built in Keyboard, Touch Pad and Monitor
- Heavy Duty Steel Construction
- Anti-Glare Tempered Glass for Added Protection for the LCD Screen
- Built-In Side Railing for Easy Installation
- Built-In Rail Self Locking Device
- 105 Character US Keyboard
- 1024 x 768 Resolution
- Power Supply: 100VAC / 240VAC Auto Switch

With rack space becoming more and more precious, network administrators are always looking for solutions that will save them any additional RUs. The MMK15-RM is a 1RU drawer design with an integrated 15" LCD monitor, keyboard, and mouse. Features include flip-up design, adjustable brackets and built in LCD OSD to provide effective assistance for network administrators controlling single or multiple PCs.

MMK17-RM ***17" Rack Mount Monitor***

- Meets EIA310c and IEC-3 Specifications
- Built in Keyboard, Touch Pad and Monitor
- Heavy Duty Steel Construction
- Anti-Glare Tempered Glass for Added Protection for the LCD Screen
- Built-In Side Railing for Easy Installation
- Built-In Rail Self Locking Device
- 105 Character US Keyboard
- X x X Resolution
- Power Supply: 100VAC / 240VAC Auto Switch

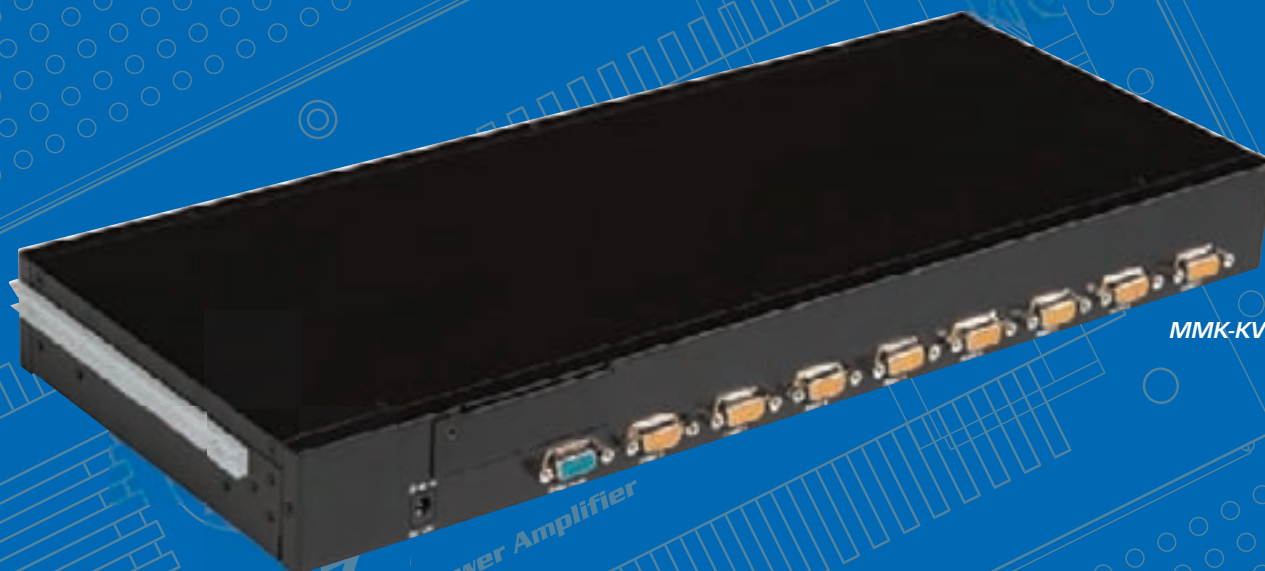
With rack space becoming more and more precious, network administrators are always looking for solutions that will save them any additional RUs. The MMK17-RM is a 1RU drawer design with an integrated 17" LCD monitor, keyboard, and mouse. Features include flip-up design, adjustable brackets and built in LCD OSD to provide effective assistance for network administrators controlling single or multiple PCs.



MMK-DB10



MMK-DD10



MMK-KVM8

MMK Series Rack Mount Monitor/Keyboard Accessories

Atlas Racks MMK series of accessories are the easiest and most secure way to add system control consoles to your rack mount equipment. The MMK15-RM and MMK17-RM are compact 1RU pull out console rack systems with 15" and 17" (respectively) LCD monitor, mouse, and a full keyboard available in 17 different keyboard language sets. The single rail design is easy to install for one person in any 19" rack. The console comes with key lock for security and protection against unauthorized use.

The MMK15-RM and MMK17-RM consoles connect to attached servers and computers through the MMK-KVM8 8-port modular combo-free KVM switch. It has complete keyboard and mouse emulation for simultaneous PC boot up process and supports MS Windows, Netware, Unix, and Linux systems or iMac, Power Mac and Sun Micro Systems via USB port. No software is required and the KVM switch features On Screen Display (OSD) menu, password security, hot key control, and auto scan control. The

MMK-KVM8 also includes one optional IP-based remote console port for use with MMK-IPM IP interface module to control one or several computers locally at the server site or remotely via the Internet using a standard browser. The MMK-IPM switch redirects local keyboard, mouse and video data to a remote administration console to securely gain BIOS level access to systems for maintenance, support, or failure recovery online. Communication is encryption with SSL for added security.

Connection is made from MMK-KVM8 to servers and computers with MMK-DB10 and MMK-DD10 cables. The MMK-DD10 cable connects to computer via VGA monitor port and PS/2 mouse and keyboard inputs. The MMK-DB10 cable connects via VGA monitor port and single USB connector for both keyboard and mouse data as a standard HID (Human Interface Device) with no extra driver needed. Both cables are 3m in length.

MMK Series Rack Accessories

- MMK-KVM8 – 8-port modular combo-free KVM switch
- MMK-IPM – IP interface module switch
- MMK-DB10 – 3 meter HDB-15 to VGA + USB cable
- MMK-DD10 – 3 meter HDB-15 to VGA + (2) PS/2 cable